

SC
MISC
INDEX
MARGIN
PROOF
COMPARE

BLACK HAWK COUNTY IOWA:SS 013996
Filed for record NOV 27, 2001 at
4:00 P.M. and recorded in Book 344
of MISC Page 900

Paul H. Helland Recorder
FEE 1-5.00X
PAUL HELLAND
1107 TECHNOLOGY PARKWAY
CEDAR FALLS IA 50613
50613-6951, (319)-266-0161

Paul H. Helland, 1107 Technology Parkway, Cedar Falls, Iowa

UNITED STATES PUBLIC LAND SURVEY CORNER CERTIFICATE OF

LAND SURVEY MONUMENTS SITUATED IN SECTION NO. 27, TOWNSHIP NO. 90 NORTH, RANGE
NO. 11 WEST OF THE FIFTH PRINCIPAL MERIDIAN, BLACK HAWK COUNTY, IOWA.
PREVIOUSLY RECORDED IN BOOK _____, PAGE _____.

(SHOW REASON FOR PREPARING THIS CERTIFICATE, THE EVIDENCE AND DETAILED PROCEDURES USED IN ESTABLISHING THE
CORNER POSITIONS AND MONUMENTATION FOUND OR PLACED.)

MONUMENT DESCRIPTION AND REMARKS:

SURVEY DONE IN NW 1/4 NW 1/4 OF SEC. 27-T90N-R11W.

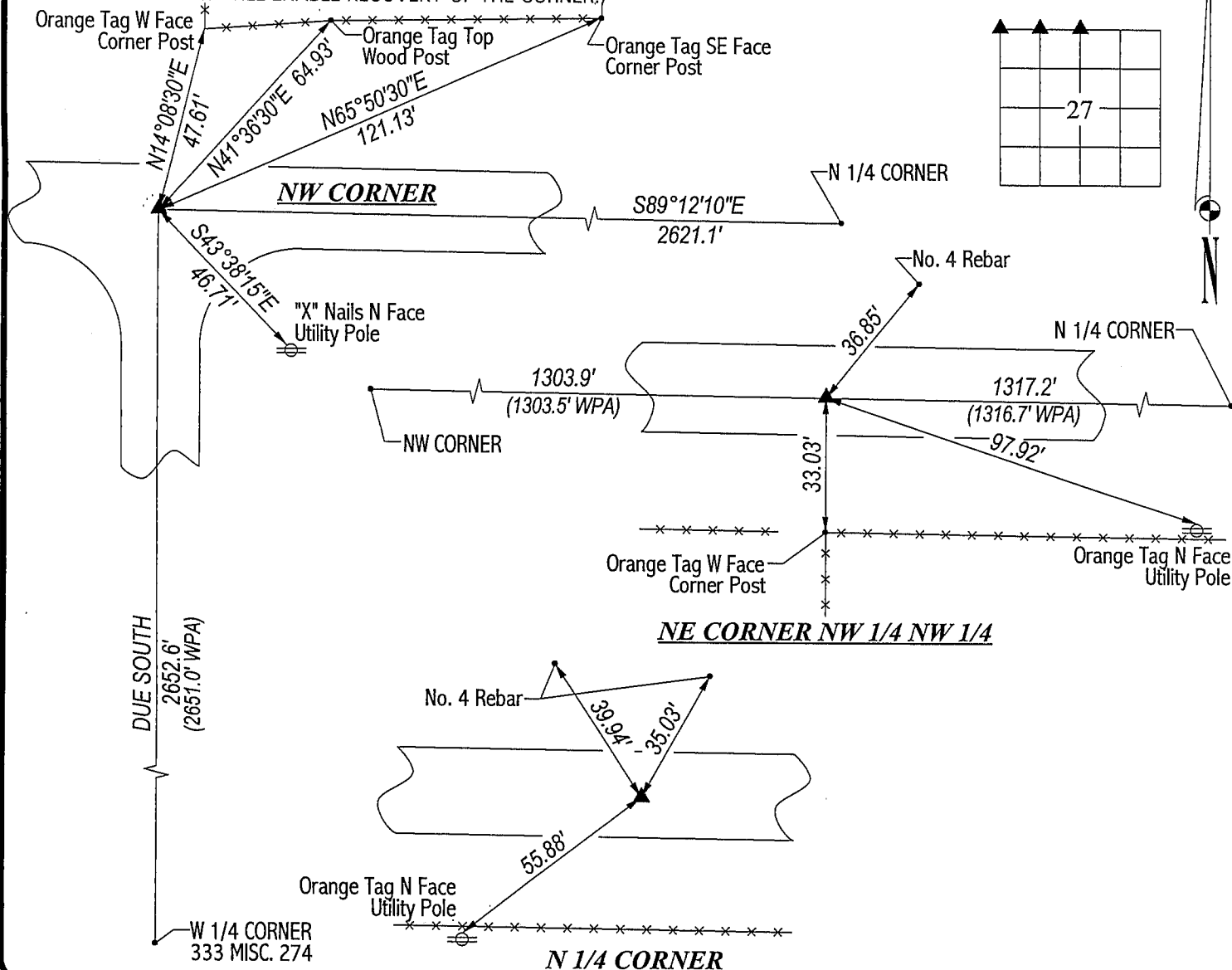
NW CORNER: Found concrete monument w/brass cap 0.8' deep per county reference ties. Found RR spike to the North of
said concrete monument and set No. 4 rebar just West of RR spike for magnetic detection.

NE CORNER OF NW 1/4 NW 1/4: No county reference ties. Set No. 4 rebar w/orange cap #6505 on straight line between the
NW Corner & N 1/4 Corner in line w/fence running South fitting WPA chaining distances.

N 1/4 CORNER: Found broken off concrete monument flush w/road surface, also found w/1/2" pin x 6" long on North side.
Cut "X" on top of concrete monument and set No. 4 rebar on North side for magnetic detection 0.21' North of "X".

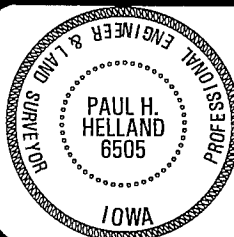
PLAN VIEW

(SHOW A MINIMUM OF THREE REFERENCE TIES TO DURABLE PHYSICAL OBJECTS, RELEVANT MONUMENTS AND PHYSICAL
CONDITIONS THAT WILL ENABLE RECOVERY OF THE CORNER.)



HELLAND ENGINEERING & SURVEYING, LTD.
1107 Technology Parkway
Cedar Falls, Iowa 50613-6951
(319)-266-0161

FILE NAME: 01-266C1.DRG



I hereby certify that this land surveying document was prepared
and the related survey work was performed by me or under my
direct personal supervision and that I am a duly licensed Land
Surveyor under the laws of the State of Iowa.

Paul H. Helland
Paul H. Helland
License Number 6505
My license renewal date is December 31, 2001.
All pages or sheets are covered by this seal except:

LIST CORNERS TO BE INDEXED

| CORNER | SECTION | TOWNSHIP | RANGE |
|---------------|---------|----------|-------|
| NW CORNER | 27 | 90N | 11W |
| NE CORNER | 27 | 90N | 11W |
| NW 1/4 NW 1/4 | 27 | 90N | 11W |
| N 1/4 CORNER | 27 | 90N | 11W |