

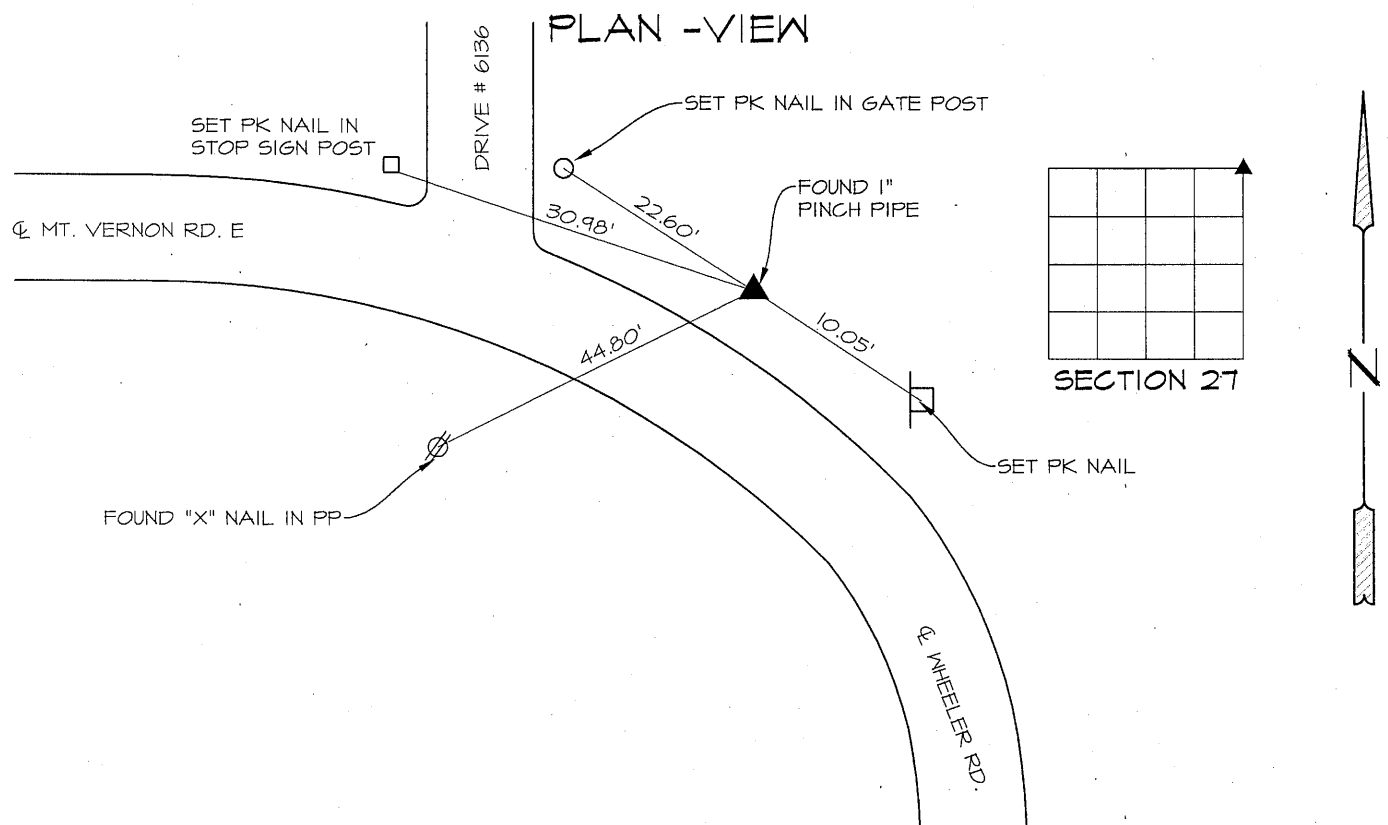
PREPARED BY PATRICK SHEPARD: CIVIL ENGINEERING CONSULTANTS, INC. - 2400 86th ST. #12 -DES MOINES, IOWA 50322

UNITED STATES PUBLIC LAND SURVEY CORNER CERTIFICATE OF

LAND SURVEY MONUMENTS SITUATED IN SECTION 27, TOWNSHIP 90 NORTH, RANGE 11 WEST, OF THE FIFTH PRINCIPAL MERIDIAN, BLACK HAWK COUNTY, IOWA. PREVIOUS RECORD FOUND IN THE SURVEY BOOKS AT THE BLACK HAWK COUNTY ENGINEER'S OFFICE.

MONUMENT DESCRIPTION AND REMARKS:

NE CORNER, 27-90-11. PREVIOUS RECORD INDICATES CONCRETE MONUMENT WITH CAP. FOUND 1" PINCH PIPE AS NOTED IN A PLAT OF SURVEY IN BOOK 248 MISC. PAGE 791. NO PREVIOUS TIES WERE FOUND. THIS CERTIFICATE IS BEING PREPARED TO DOCUMENT MONUMENTATION FOUND AND ACCEPTED AS THE NE CORNER AND TO PROVIDE TIES.



LIST CORNERS TO BE INDEXED

CORNERS	SECTION	TWP.	RANGE
NE CORNER	27	90	11
SW CORNER	23	90	11
NW CORNER	26	90	11
SE CORNER	22	90	11

