

PREPARED BY PATRICK SHEPARD: CIVIL ENGINEERING CONSULTANTS, INC. - 2400 86th ST. #12 -DES MOINES, IOWA 50322

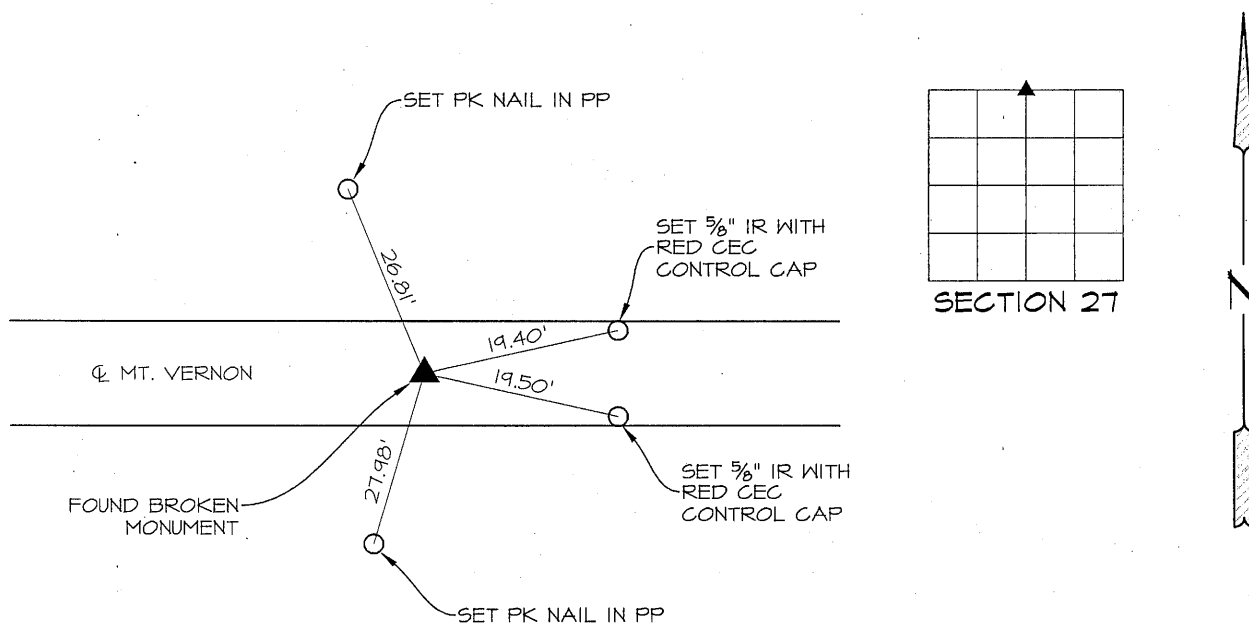
UNITED STATES PUBLIC LAND SURVEY CORNER CERTIFICATE OF

LAND SURVEY MONUMENTS SITUATED IN SECTION 27, TOWNSHIP 90 NORTH, RANGE II WEST, OF THE FIFTH PRINCIPAL MERIDIAN, BLACK HAWK COUNTY, IOWA. PREVIOUS RECORD FOUND AT THE BLACK HAWK COUNTY RECORDER'S OFFICE IN BOOK 344 MISC. PAGE 900.

MONUMENT DESCRIPTION AND REMARKS:

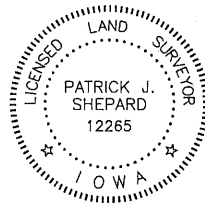
N $\frac{1}{4}$ CORNER, 27-90-II. FOUND BROKEN MONUMENT THAT MATCHES PREVIOUS RECORD. NO PREVIOUS TIES WERE FOUND. THIS CERTIFICATE IS BEING PREPARED TO REPLACE LOST TIES.

PLAN -VIEW



LIST CORNERS TO BE INDEXED

| CORNERS | SECTION | TWP. | RANGE |
|------------------------|---------|------|-------|
| N $\frac{1}{4}$ CORNER | 27 | 90 | II |
| S $\frac{1}{4}$ CORNER | 22 | 90 | II |



I HEREBY CERTIFY THAT THIS LAND SURVEYING DOCUMENT WAS PREPARED AND THE RELATED SURVEY WORK WAS PERFORMED BY ME OR UNDER MY DIRECT PERSONAL SUPERVISION AND THAT I AM A DULY LICENSED LAND SURVEYOR UNDER THE LAWS OF THE STATE OF IOWA.

Patrick J. Shepard 1-24-13
PATRICK J. SHEPARD, IOWA LICENSE NO. 12265 DATE
MY LICENSE RENEWAL DATE IS DECEMBER 31, 2013

PAGES OR SHEETS COVERED BY THIS SEAL:

THIS SHEET ONLY