

PREPARED BY: BLACK HAWK COUNTY ENGINEERS OFFICE
316 E. FIFTH STREET, ROOM 211 WATERLOO, IOWA 50703

PH.# (319) 833-3008
FAX.# (319) 833-3139
SLSI 9-94
BHCO 03-09

UNITED STATES PUBLIC LAND SURVEY CORNER CERTIFICATE OF
Land Survey Monuments situated in Section 25, Township 90 N,
Range 11 W, of the Fifth Principal Meridian, BLACK HAWK County, Iowa.
Previously recorded in Misc. Book N/A, Page N/A, in County Recorder's Office.

(Show reason for preparing this certificate): There is No Certificate for the corner on file with County Recorder, per Ia. Code 355.11(1)(a).

(Evidence and detailed procedures used in establishing the corner position(s) and monumentation found or placed.)

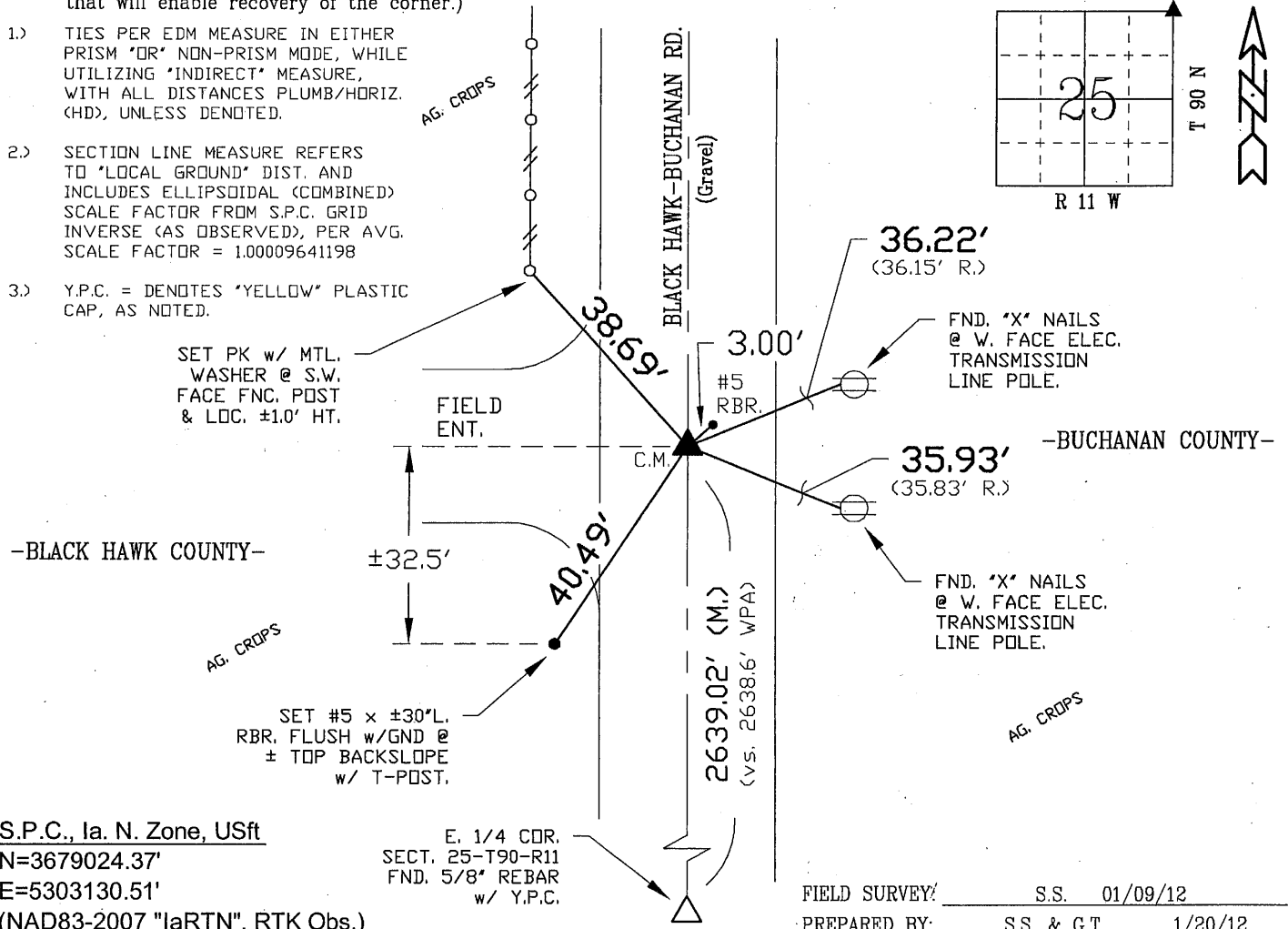
Monument Description and Remarks: N.E. COR.
NO CURRENT LAND CORNER CERT. ON RECORD, WITH NO RECORD W.P.A. TIES REMAINING.
EXIST. "X" NAIL TIES TO P.P.'S EAST PER BHCO. ENG. HIST. TIES DATED "1971" CALL FOR
"FOUND MON. 3" DEEP". FIELD WORK COINCIDED w/HELLAND ENG. & SURV. (H.E.S.) WHO
EXCAVATED TO ±5" DP. AND FND. STD. W.P.A. CONC. MON. w/TOP BROKE OFF AND SET PK
NAIL IN CENTER. H.E.S. ALSO SET 5/8" (#5) RBR. @ NORTH FACE OF C.M. FOR MAGNETIC
LOCATION. BH. CO. ALSO RECOVERED A 5/8" REBAR @ 5" DEEP NEAR CORNER, BEING
LOCATED @ 3.00' (M.) N.E.'ly OF FND. C.M. AT 2.66' EAST AND 1.39' NORTH OF C.M. (REF.'S
PERP. TO E. LINE OF N.E. 1/4 SAID SECT. 25). LAND CORNER USED FOR R.O.W. REF. SOUTH
OF COR. BY B.H. CO., & "NORTH" OF COR. FOR PLAT OF SURVEY BY H.E.S., WHILE THE FND.
#5 RBR. MAY REFER TO A PLAT OF SURVEY IN BUCHANAN CO., YET DID NOT RESEARCH.

PLAN VIEW
"NOT TO SCALE"

BHco Hist. Ties: BK. #1003 p.25 90-11
FIELD BOOK: Ties per Topcon 7003i #Z0115

(Show a minimum of three reference ties to durable physical objects, relevant monuments and physical conditions that will enable recovery of the corner.)

- 1.) TIES PER EDM MEASURE IN EITHER PRISM "OR" NON-PRISM MODE, WHILE UTILIZING "INDIRECT" MEASURE, WITH ALL DISTANCES PLUMB/HORIZ. (HD), UNLESS DENOTED.
- 2.) SECTION LINE MEASURE REFERS TO "LOCAL GROUND" DIST. AND INCLUDES ELLIPSOIDAL (COMBINED) SCALE FACTOR FROM S.P.C. GRID INVERSE (AS OBSERVED), PER AVG. SCALE FACTOR = 1.00009641198
- 3.) Y.P.C. = DENOTES "YELLOW" PLASTIC CAP, AS NOTED.



S.P.C., Ia. N. Zone, USft
N=3679024.37'
E=5303130.51'
(NAD83-2007 "IaRTN", RTK Obs.)

E. 1/4 COR.
SECT. 25-T90-R11
FND. 5/8" REBAR
w/ Y.P.C.

FIELD SURVEY/ S.S. 01/09/12
PREPARED BY: S.S. & G.T. 1/20/12

CERTIFICATION



I hereby certify that this land surveying document was prepared and the related survey work was performed by me or under my direct personal supervision and that I am a duly licensed Land Surveyor under the laws of the State of Iowa.
Geoffrey Allen Tinker 01/20/2012
Geoffrey Allen Tinker (date)
License Number 15748
My license renewal date is December 31, 2012
Pages or sheets covered by this seal:
This Land Corner Certificate Only.

LIST CORNERS TO BE INDEXED

Corner	Section -	Township -	Range
N.E. Cor.	25	90 N	11 W
S.E. Cor.	24	90 N	11 W

INDEX OF ABBREVIATIONS

(M) = "Measured" Dimension
(P) = "Platted" Dimension
(R) = "Record" Dimension
(C) = "Calculated" Dimension
(GS) = Iowa Geodetic Survey
(WPA) = Works Progress Admin. Survey
"a" = per George Miller Survey (BHco Surveyor 1858-1860)
"b" = per John Ball Survey (BHco Surveyor 1866-1891)
"N" = per Nathan Barber Survey (BHco Surveyor 1908-1931)
"NP" = Reflectless EDM Meas.
"MLM" = Indirect Measure
"CM" = Concrete Monument
"SM" = Survey Marker Spike/Tag
"PK" = PK/MAG Nail Brand Style