

File 2012-00013470

PH.# (319) 833-3008
FAX.# (319) 833-3139

SLSI 9-94
BHCO 03-09

Land Survey Monuments situated in Section 25 , Township 90 N ,
Range 11 W , of the Fifth Principal Meridian, BLACK HAWK County, Iowa.
Previously recorded in Misc. Book N/A , Page N/A , in County Recorder's Office.

(Show reason for preparing this certificate): There is No Certificate for the corner on file with County Recorder, per Ia. Code 355.11(1)(a).

(Evidence and detailed procedures used in establishing the corner position(s) and monumentation found or placed.)

Monument Description and Remarks: E. 1/4 COR.

NO CURRENT LAND CORNER CERT. ON RECORD, AND NO W.P.A. CORNER TIES OF RECORD WERE
DETAILED FOR ORIG. FND. SANDSTONE (6"x8"x8.5") PRIOR TO SET STD. WPA C.M. (01/13/1941).
ONLY ONE B.H. CO. ENG. HIST. TIE REMAINS (TO W.). EXCAVATED TO ±5" DP. AND FOUND
5/8" (#5) REBAR w/YELLOW PLASTIC CAP (Y.P.C. w/LS # ILLEGIBLE) AND CORNER ALIGNED
±2.0' NORTH OF FENCELINE TO WEST. ROAD SEGMENT TO "SOUTH" ALONG EAST LINE OF
S.E. 1/4 SAID SECTION DOES "NOT" FOLLOW THE PHYSICAL CENTERLINE OF ROAD, AS
OBSERVED. PHYSICAL R.O.W. (DATED FENCES & UTILITIES) WERE LOCATED FOR REF. TO
OCCUPIED R.O.W. vs. RD. #573 DEDICATION @ THREE RODS WIDE (49.5') ALONG SAID EAST
LINE, PER CO. ENG. PROJECT DRAWING (FOR FILE). CORNER RETIED & FILED FOR RECORD.

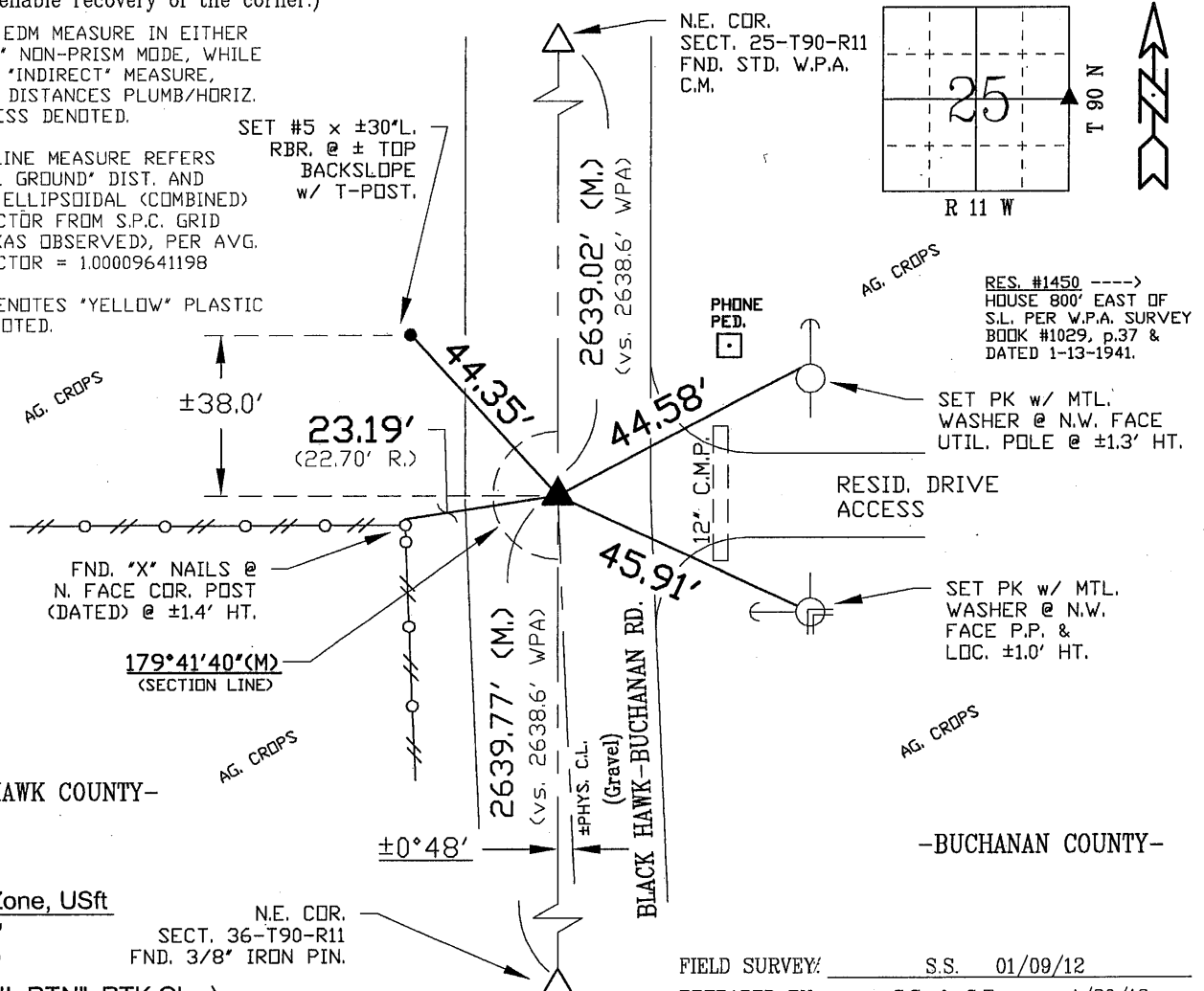
BHco Hist. Ties: BK. #1003 p.25 90-11

"NOT TO SCALE"

FIELD BOOK: Ties per Topcon 7003i #Z0115

(Show a minimum of three reference ties to durable physical objects, relevant monuments and physical conditions that will enable recovery of the corner.)

- 1.) TIES PER EDM MEASURE IN EITHER PRISM "OR" NON-PRISM MODE, WHILE UTILIZING "INDIRECT" MEASURE, WITH ALL DISTANCES PLUMB/HORIZ. (HD), UNLESS DENOTED. SE
- 2.) SECTION LINE MEASURE REFERS TO "LOCAL GROUND" DIST. AND INCLUDES ELLIPSOIDAL (COMBINED) SCALE FACTOR FROM S.P.C. GRID INVERSE (AS OBSERVED), PER AVG. SCALE FACTOR = 1.00009641198
- 3.) Y.P.C. = DENOTES "YELLOW" PLASTIC CAP. AS NOTED.



S.P.C., Ia. N. Zone, USft

$$N=3676385.77'$$

E=5303160.89'

(NAD83-2007 "IaRTN", RTK Obs.)

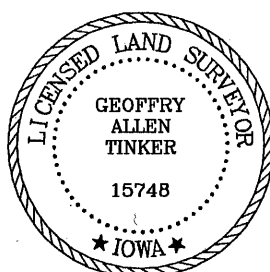
N.E. COR.
SECT. 36-T90-R11
FND. 3/8" IRON PIN.

FIELD SURVEY: S.S. 01/09/12

PREPARED BY: S.S. & G.T. 1/20/12

LIST CORNERS TO BE INDEXED

<u>Corner</u>	<u>Section</u>	<u>Township</u>	<u>Range</u>
E. 1/4	25	90 N	11 W



I hereby certify that this land surveying document was prepared and the related survey work was performed by me or under my direct personal supervision and that I am a duly licensed Land Surveyor under the laws of the State of Iowa.

Geoffrey Allen Tinker 01/20/2012
Geoffrey Allen Tinker (date)

License Number 15748

My license renewal date is December 31, 2012

Pages or sheets covered by this seal:

This Land Corner Certificate Only.

INDEX OF ABBREVIATIONS

(M) = "Measured" Dimension "NP" = Reflectorless EDM Meas.
(P) = "Platted" Dimension "MLM" = Indirect Measure
(R) = "Record" Dimension "CM" = Concrete Monument
(C) = "Calculated" Dimension "SM" = Survey Marker Spike/Tag
(GS) = Iowa Geodetic Survey "PK" = PK/MAG Nail Brand Style
(WPA) = Works Progress Admin. Survey
"G" = per George Miller Survey (BHC Surveyor 1858-1860)
"S" = per John Ball Survey (BHC Surveyor 1866-1891)
"N" = per Nathan Barber Survey (BHC Surveyor 1908-1931)