



Doc ID: 009566740001 Type: GEN
Recorded: 06/12/2019 at 01:11:42 PM
Fee Amt: \$7.00 Page 1 of 1
Black Hawk County Iowa
SANDIE L. SMITH RECORDER

File 2019-00018744

Reserved for County Recorder's use.

Kyle J. Helland, 6109 Chancellor Drive, Cedar Falls, Iowa 50613-6919, (319)-266-0161

UNITED STATES PUBLIC LAND SURVEY CORNER CERTIFICATE OF

LAND SURVEY MONUMENTS SITUATED IN SECTION NO. 25, TOWNSHIP NO. 90 NORTH, RANGE
NO. 11 WEST OF THE FIFTH PRINCIPAL MERIDIAN, BLACK HAWK COUNTY, IOWA.
PREVIOUSLY RECORDED IN FILE 2013-19851.

(SHOW REASON FOR PREPARING THIS CERTIFICATE, THE EVIDENCE AND DETAILED PROCEDURES USED IN ESTABLISHING THE
CORNER POSITIONS AND MONUMENTATION FOUND OR PLACED.)

MONUMENT DESCRIPTION AND REMARKS:

INCOMPLETE USPLSCC SURVEY COMPLETED IN THE W 1/2 SW 1/4 OF SEC. 25-T90N-R11W.

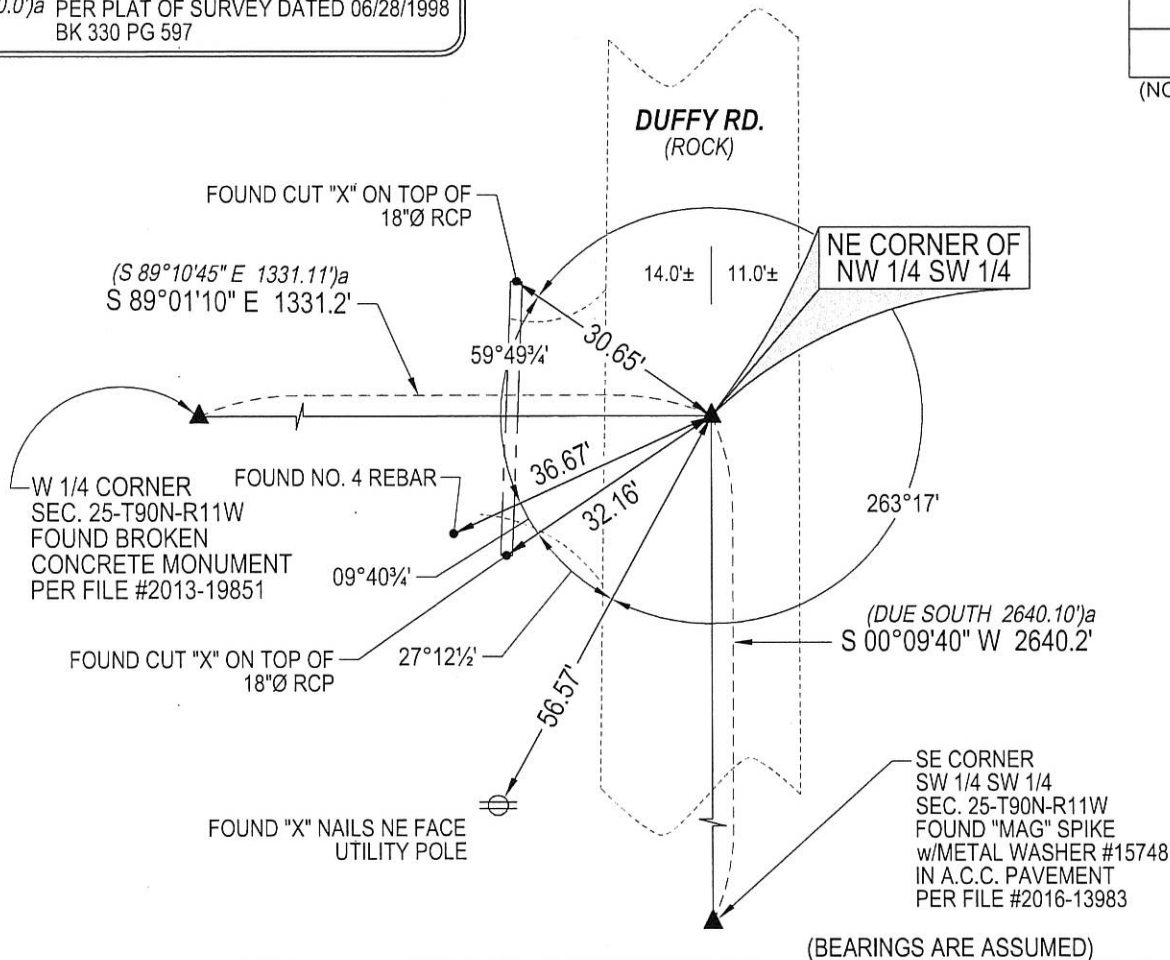
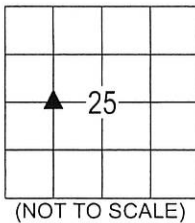
→ **NE CORNER NW 1/4 SW 1/4:** USPLSCC FILE #2013-19851 DATED 03/23/2013 CALLS FOR [FOUND 1/2" Ø IRON ROD. POSITION IS IN APPROXIMATE CENTER OF DUFFY ROAD ESTABLISHED MONUMENT IS FOUND TO BE APPROX. 4.8' NORTH OF LINE BETWEEN E & W QUARTER CORNERS. ACCEPTED MONUMENT AS SECTION CORNER]. SEARCHED AREA WITH MAGNETIC DETECTOR FOUND NO. 4 REBAR 0.3 DEEP BENT & STRAIGHTENED. WHEN READING THROUGH SAID USPLSCC FILE #2013-19851 THEY DID NOT STATE DISTANCES TO REFERENCE TIES ON SAID USPLSCC, THEREFORE RETIED SAID CORNER.

PLAN VIEW

(SHOW A MINIMUM OF THREE REFERENCE TIES TO DURABLE PHYSICAL OBJECTS, RELEVANT MONUMENTS AND PHYSICAL CONDITIONS THAT WILL ENABLE RECOVERY OF THE CORNER.)

LEGEND

(0.0')a PER PLAT OF SURVEY DATED 06/28/1998
BK 330 PG 597



HELLAND ENGINEERING & SURVEYING, LTD.
6109 Chancellor Drive
Cedar Falls, Iowa 50613-6919
(319)-266-0161

SHINER = 4d. NAIL & 1 5/16" Ø METAL SHINER DRAWN BY: CDR
BRASS TAG = 4d. NAIL & 13/16" Ø BRASS TAG
OPC = PLASTIC CAP (O=ORANGE, R=RED, Y=YELLOW)
(00') RECORDED AS FILE NAME: 19-120-51.DWG



I hereby certify that this land surveying document was prepared
and the related survey work was performed by me or under my
direct personal supervision and that I am a duly licensed
Professional Land Surveyor under the laws of the State of Iowa.
Kyle J. Helland
License Number 23212
My license renewal date is December 31, 2019.
All pages or sheets are covered by this seal except:

LIST CORNERS TO BE INDEXED

CORNER	SECTION	TOWNSHIP	RANGE
NE COR. NW 1/4 SW 1/4	25	90N	11W
SE COR. SW 1/4 NW 1/4	25	90N	11W
SW COR. SE 1/4 NW 1/4	25	90N	11W
NW COR. NE 1/4 SW 1/4	25	90N	11W