

UNITED STATES PUBLIC LAND SURVEY CORNER CERTIFICATE

OF

RECORDED

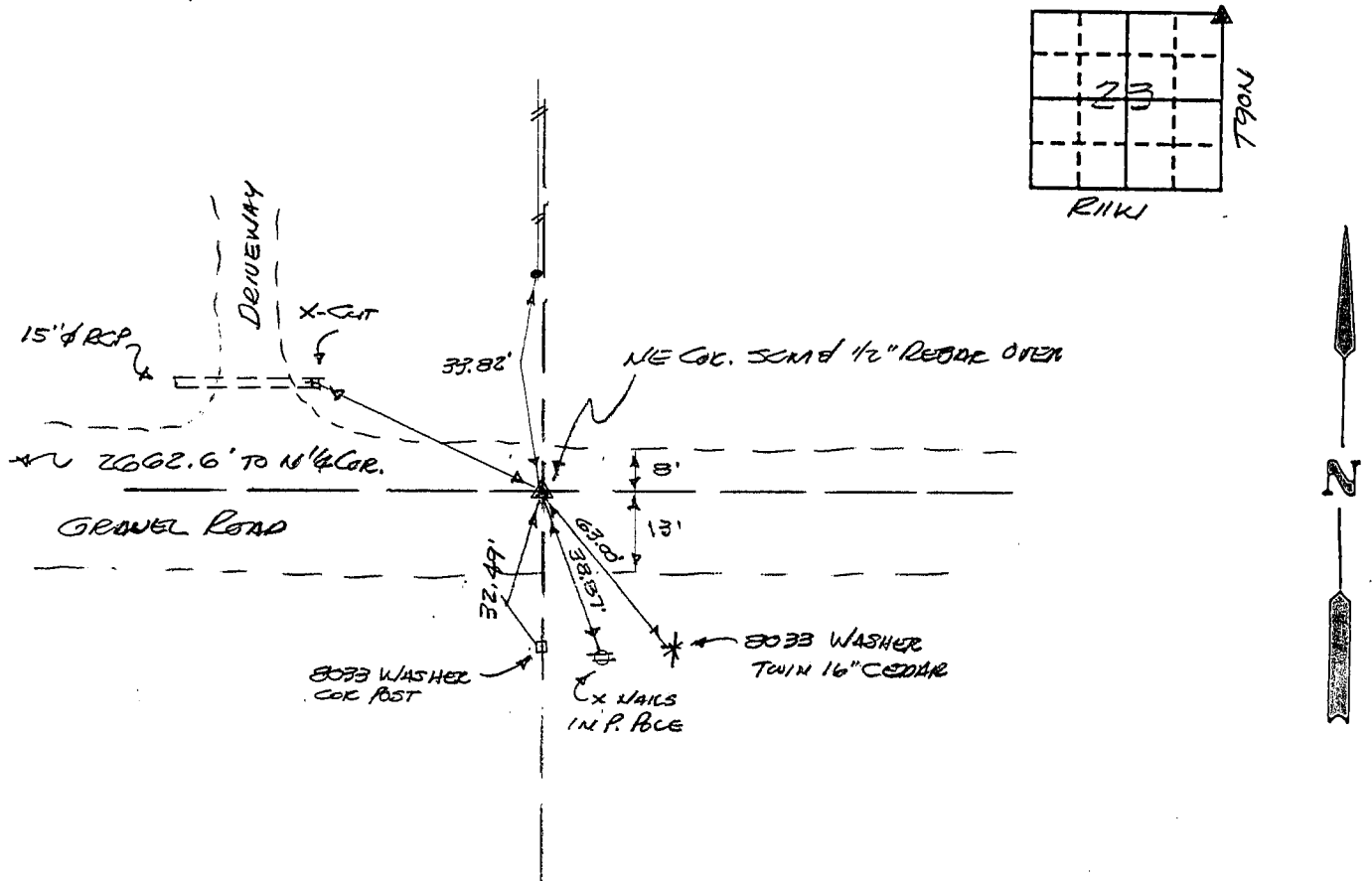
Land Survey Monuments situated in Section 23, Township 90N, Range 11W, of the Fifth Principal Meridian, BLACK HAWK County, Iowa. Previously recorded in N/A in County Recorder's Office.

(Show reason for preparing this certificate, the evidence and detailed procedures used in establishing the corner positions and monumentation found or placed.)

Monument Description and Remarks: FOUND 4"x4" SCM 2.75' DEEP USING
COUNTY TIE. SET 1 1/2" x 24" REBAR ON SW SIDE MON. & SET 1 1/2" x 24"
BAR & CAP OVER MON. ~ 4" BELOW ROAD SURFACE

PLAN - VIEW

(Show a minimum of three reference ties to durable physical objects, relevant monuments and physical conditions that will enable recovery of the corner.)



352-56

I hereby certify that the survey work was completed and this certificate was prepared by me or under my direct personal supervision and that I am a duly registered land surveyor under the laws of the state of Iowa.

Signature: F. William King
Name typed or printed: F. WILLIAM KING
Date: 6-16-1992 Reg. No. 8033

Corners	List Corners to be Indexed Section	Twp	Range
NE	23	90N	11W

SEAL



MISC BK 301 p. 682

