

Reserved for County Recorder's use.

Doc ID: 008216090002 Type: GEN
Recorded: 08/29/2017 at 12:14:31 PM
Fee Amt: \$12.00 Page 1 of 2
Black Hawk County Iowa
SANDIE L. SMITH RECORDER
File **2018-00003677**

Kyle J. Helland, 1107 Technology Parkway, Cedar Falls, Iowa 50613-6951, (319)-266-0161

UNITED STATES PUBLIC LAND SURVEY CORNER CERTIFICATE
OF

LAND SURVEY MONUMENTS SITUATED IN SECTION NO. 22, TOWNSHIP NO. 90 NORTH, RANGE
NO. 11 WEST OF THE FIFTH PRINCIPAL MERIDIAN, BLACK HAWK COUNTY, IOWA.
PREVIOUSLY RECORDED IN USPLSCC FILE 2011-00005901

(SHOW REASON FOR PREPARING THIS CERTIFICATE, THE EVIDENCE AND DETAILED PROCEDURES USED IN ESTABLISHING THE
CORNER POSITIONS AND MONUMENTATION FOUND OR PLACED.)

MONUMENT DESCRIPTION AND REMARKS:

THIS USPLSCC IS BEING PREPARED BECAUSE THE LOCATION OF CORNER DIFFERS FROM THE PREVIOUS
LOCATION PER USPLSCC FILE 2011-00005901. SURVEY COMPLETED IN SEC. 14-T90N-R11W.

→ **NE CORNER:**

JOHN BALL HISTORICAL SURVEY PAGE 660 DATED 03/24-25/1885 CALLS FOR [STONE].

COUNTY CORNERSTONE TIES PAGE 66 DATED 11/29/39 CALLS FOR [N.E. COR. SEC. 22-90-11 AT LOCATION
INDICATED BY RANDOM LINE DUG HOLE 5 FT SQ. 18 DEEP. FOUND N*****HEAD 17"x9"x12" LOWERED ALL
EVIDENCE IN PLACE AND SET CM WITH CAP MARKED ¹⁵/₁₄ SET TOP OF C.M. 12" DEEP].
22/23

PLAT OF SURVEY RECORDED IN MISC. BOOK 541 PAGE 906 DATED MARCH 1981 CALLS FOR [FD. IRON PIN].
COUNTY TIES PAGE "F" DATED 3/81 CALLS FOR [FD. 5/8" REBAR AT SURFACE]. TIES BELIEVED TO HAVE BEEN
SUPPLIED BY THE SURVEYOR OF SAID MISC. 541 PG 906 BASED ON SIMILARITY OF DATE OF SURVEY AND
DATE OF CORNER TIES.

USPLSCC DATED 09/21/2010 AND RECORDED IN FILE 2001-00005901 CALLS FOR [FOUND SPIKE IN E.
BENNINGTON RD LOCATION FIT COUNTY ENGINEER TIES AND CHAINING NOTES SET 1/2" REBAR YPC 9647 IN
SAME LOCATION AFTER FURTHER SEARCHING FOR CONCRETE MONUMENT].

FOUND YPC #9647 IN CENTER OF E. BENNINGTON ROAD PER SAID USPLSCC, ALSO FOUND 5/8" REBAR PER
COUNTY TIES DATED 3/81 NORTHWEST OF SAID USPLSCC CORNER ON SHOULDER OF GRAVEL ROAD.
POSITION OF CORNER SHOWN ON USPLSCC SHOWS THE CORNER FALLING IN THE CENTER OF E.
BENNINGTON ROAD WHICH CONFLICTS WITH COUNTY ENGINEER TIES DATED 3/81. SAID USPLSCC STATES
THAT THE CORNER FITS COUNTY ENGINEER TIES, BUT DOES NOT SHOW ANY FOUND COUNTY TIES TO
VERIFY ITS LOCATION. FURTHERMORE, SAID USPLSCC STATES THAT CORNER FITS COUNTY ENGINEER
CHAINING NOTES, WHICH SAID CORNER DOES FIT WITHIN REASON (1.0'±) FROM THE NORTH 1/4 CORNER OF
SECTION 22, HOWEVER IT IS SIGNIFICANTLY SHORT IN MEASUREMENT (-13.02') PER COUNTY ENGINEER
CHAINING NOTES FROM THE EAST 1/4 CORNER OF SECTION 22, THUS CAUSING SAID CORNER TO BE
SUSPECT.

FOUND THE 5/8" REBAR PER MISC. 541 PG 906 AND PER COUNTY TIES PAGE "F", ALONG THE NORTH
SHOULDER OF E. BENNINGTON ROAD. HOWEVER IT IS LONG IN MEASUREMENT (+5.39') PER COUNTY
ENGINEER CHAINING NOTES FROM THE NORTH 1/4 CORNER OF SECTION 22 PER 541 MISC. 906. MOREOVER,
IT IS SIGNIFICANTLY SHORT IN MEASUREMENT (-13.23') PER COUNTY ENGINEER CHAINING NOTES TO THE
NORTH 1/4 CORNER OF SECTION 23 PER OUR MEASUREMENT, THUS CAUSING SAID CORNER TO BE SUSPECT
ALSO. THEREFORE, STARTED EXCAVATION 13'± NORTH OF SAID YPC #9647 AND 5.4'± WEST OF SAID 5/8"
REBAR. CONTINUING EXCAVATION WESTERLY AND FOUND A STANDARD CONCRETE MONUMENT WITH BRASS
CAP (SEE DETAIL) 0.8' DEEP. SAID MONUMENT IS 14.31" NORTHERLY OF SAID 1/2" REBAR WITH YPC #9647 PER
USPLSCC AND 7.72' WESTERLY OF FOUND 5/8" REBAR PER COUNTY TIES.

TOP 1.0'± OF SAID MONUMENT IS BROKEN, BUT IS POSITIONED ON THE REMAINING PORTION OF THE
CONCRETE MONUMENT. THEREFORE, SET 1/2" REBAR ON ALL FOUR SIDES OF CONCRETE MONUMENT TO
HOLD THE TOP BROKEN PORTION IN POSITION ABOVE SAID BASE. ACCEPTED CONCRETE MONUMENT AS
CORNER.

SHEET 1 OF 2



HELLAND ENGINEERING & SURVEYING, LTD.
1107 Technology Parkway
Cedar Falls, Iowa 50613-6951
(319)-266-0161

SHINER = 8d. NAIL & 1 5/16"Ø METAL SHINER DRAWN BY: JBL
BRASS TAG = 8d. NAIL & 13/16"Ø BRASS TAG
OPC = PLASTIC CAP (O=ORANGE, R=RED, Y=YELLOW)
(00') RECORDED AS FILE NAME: 17-169-25.DWG



I hereby certify that this land surveying document was prepared
and the related survey work was performed by me or under my
direct personal supervision and that I am a duly licensed
Professional Land Surveyor under the laws of the State of Iowa.

Kyle J. Helland 8/4/17
Kyle J. Helland
License Number 23212
My license renewal date is December 31, 2017.
All pages or sheets are covered by this seal except:

LIST CORNERS TO BE INDEXED			
CORNER	SECTION	TOWNSHIP	RANGE
NE CORNER	22	90N	11W
SE CORNER	15	90N	11W
SW CORNER	14	90N	11W
NW CORNER	23	90N	11W

File Number: 2018-00003677 Seq: 1

UNITED STATES PUBLIC LAND SURVEY CORNER CERTIFICATE
OF

LAND SURVEY MONUMENTS SITUATED IN SECTION NO. 22, TOWNSHIP NO. 90 NORTH, RANGE
NO. 11 WEST OF THE FIFTH PRINCIPAL MERIDIAN, BLACK HAWK COUNTY, IOWA.
PREVIOUSLY RECORDED IN USPLSCC FILE 2011-00005901.

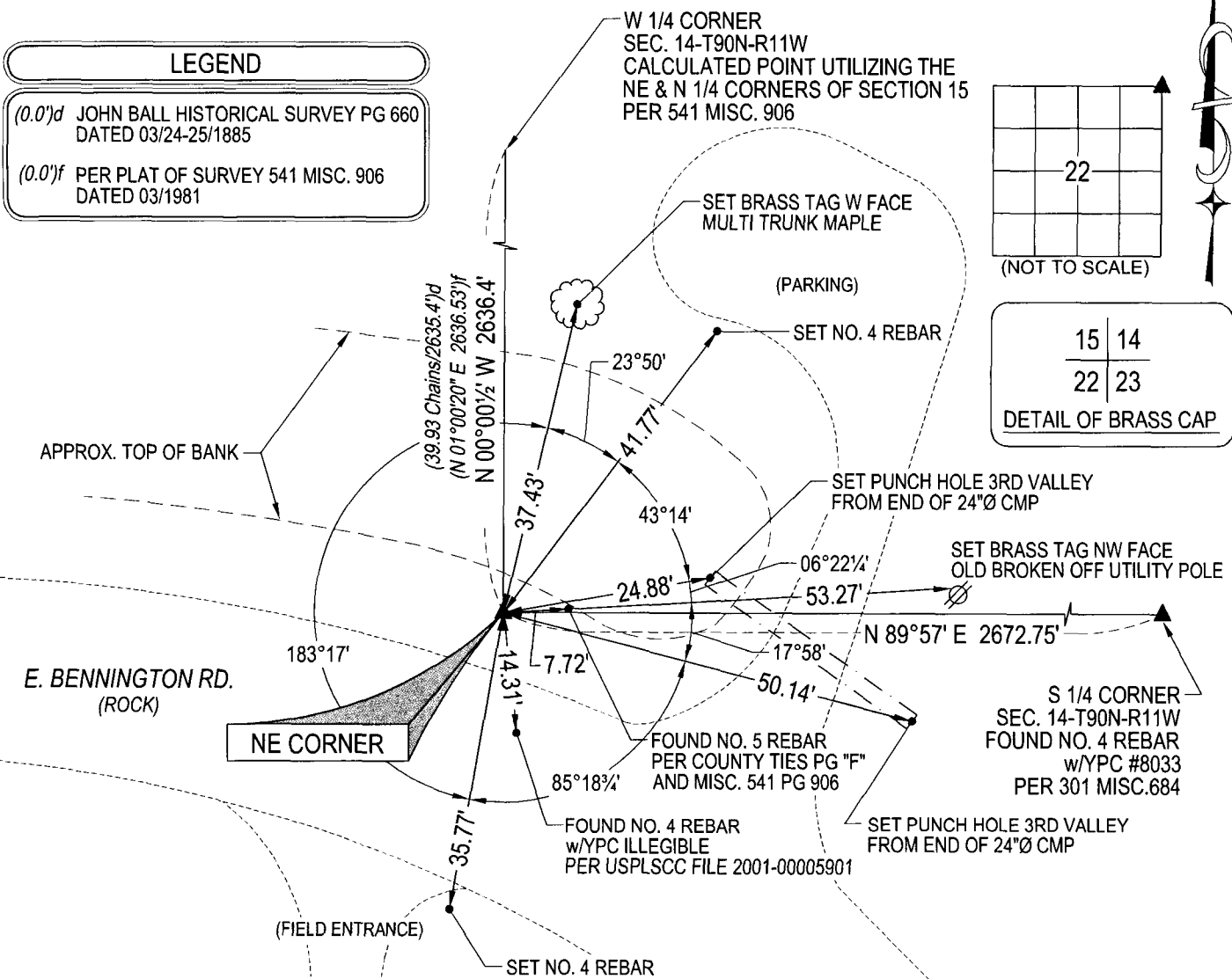
(SHOW REASON FOR PREPARING THIS CERTIFICATE, THE EVIDENCE AND DETAILED PROCEDURES USED IN ESTABLISHING THE
CORNER POSITIONS AND MONUMENTATION FOUND OR PLACED.)

MONUMENT DESCRIPTION AND REMARKS:
SURVEY COMPLETED IN SEC. 14-T90N-R11W.

→ **NE CORNER:** SEE SHEET 1 FOR DESCRIPTION

(SHOW A MINIMUM OF THREE REFERENCE TIES TO DURABLE PHYSICAL OBJECTS, RELEVANT MONUMENTS AND PHYSICAL
CONDITIONS THAT WILL ENABLE RECOVERY OF THE CORNER.)

PLAN VIEW



SHEET 2 OF 2



HELLAND ENGINEERING & SURVEYING, LTD.
1107 Technology Parkway
Cedar Falls, Iowa 50613-6951
(319)-266-0161

SHINER = 8d. NAIL & 1 5/16"Ø METAL SHINER
BRASS TAG = 8d. NAIL & 13/16"Ø BRASS TAG
OPC = PLASTIC CAP (O=ORANGE, R=RED, Y=YELLOW)
(00') RECORDED AS
DRAWN BY: JBL
FILE NAME: 17-169-25.DWG

LIST CORNERS TO BE INDEXED			
CORNER	SECTION	TOWNSHIP	RANGE
NE CORNER	22	90N	11W
SE CORNER	15	90N	11W
SW CORNER	14	90N	11W
NW CORNER	23	90N	11W