

ENTERED  
2-9-95  
VV  
BKS I & II

# UNITED STATES PUBLIC LAND SURVEY CORNER CERTIFICATE

## OF

and Survey Monuments situated in Section 21, Township 90N, Range 11W  
of the Fifth Principal Meridian, BLACK HAWK County, Iowa.

Previously recorded in NA in County Recorder's Office.  
(book, page, document number, etc.)

(Show reason for preparing this certificate, the evidence and detailed procedures used in establishing the corner positions and monumentation found or placed.)

Monument Description and Remarks: \_\_\_\_\_

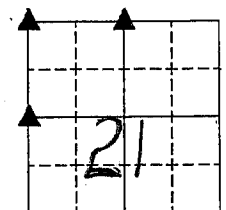
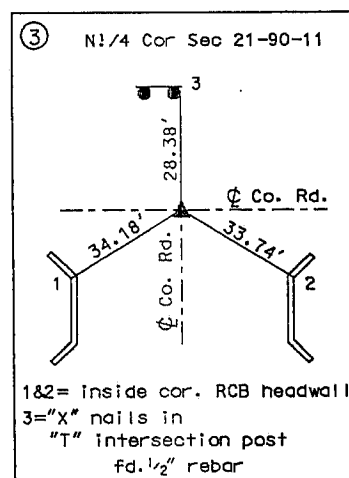
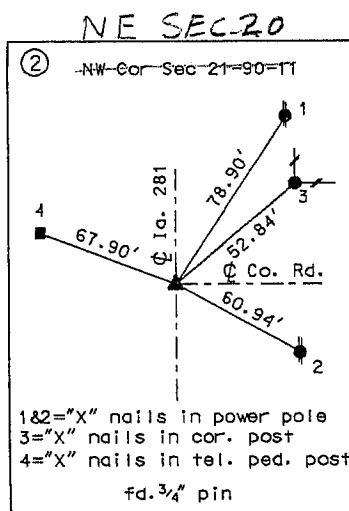
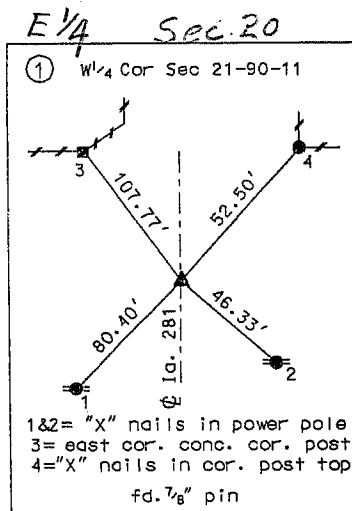
W $\frac{1}{4}$  Cor = fd.  $\frac{7}{8}$ " pin from D.O.T. ties

NW Cor = fd.  $\frac{3}{4}$ " pin from D.O.T. ties

N $\frac{1}{4}$  Cor = fd.  $\frac{1}{2}$ " rebar from D.O.T. ties

### PLAN - VIEW

(Show a minimum of three reference ties to durable physical objects, relevant monuments and physical conditions that will enable recovery of the corner.)



**N**

I hereby certify that this land surveying document was prepared by me or under my direct personal supervision and that I am a duly registered land surveyor under the laws of the state of Iowa.

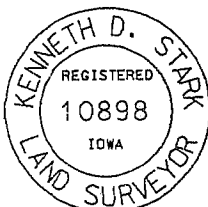
Signature: Kenneth D. Stark Registration No. 10898

Date: 9-13-94 My registration expires December 31, 1995

#### List Corners to be Indexed

Corner	Section	Township	Range
W $\frac{1}{4}$ Cor	21	90-N	11-W
NW Cor	21	90-N	11-W
N $\frac{1}{4}$ Cor	21	90-N	11-W
✓ E $\frac{1}{4}$ COR	20	90N	11
NE COR	20	90N	11

SEAL



MISC. BK. 312 p. 653