

PROOF *D*

FILED FOR RECORD APR 22

2005

AT 3:00 P. M.

FEE 1-5.00-1.00X

COMPARED

*Jeffrey P. Helland*

BLACK HAWK COUNTY RECORDER

PAUL HELLAND

Jeffrey P. Helland, 1107 Technology Parkway, Cedar Falls, Iowa 50613-6951, (319)-266-0161

UNITED STATES PUBLIC LAND SURVEY CORNER CERTIFICATE  
OFLAND SURVEY MONUMENTS SITUATED IN SECTION NO. 21, TOWNSHIP NO. 90 NORTH, RANGE  
NO. 11 WEST OF THE FIFTH PRINCIPAL MERIDIAN, BLACK HAWK COUNTY, IOWA.

PREVIOUSLY RECORDED IN \_\_\_\_\_

(SHOW REASON FOR PREPARING THIS CERTIFICATE, THE EVIDENCE AND DETAILED PROCEDURES USED IN ESTABLISHING THE  
CORNER POSITIONS AND MONUMENTATION FOUND OR PLACED.)

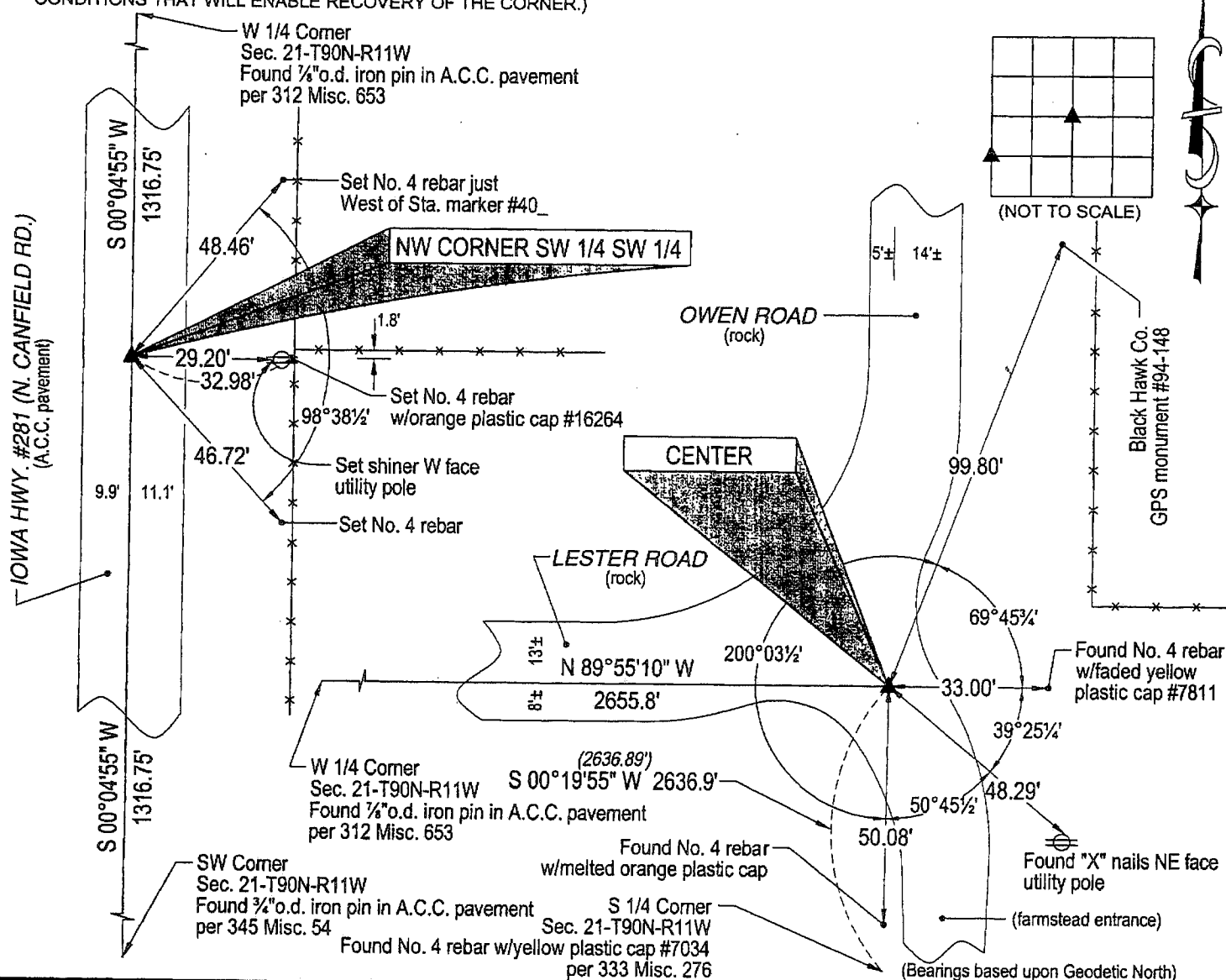
## MONUMENT DESCRIPTION AND REMARKS:

No corner certificates on file. Survey completed in the SW 1/4 of Sec. 21-T90N-R11W.

→ CENTER: Black Hawk County Engineer reference ties dated 11/20/1958 do not state what is at the Center. All reference  
ties obliterated except one tie to a box culvert (poor repair) to the NW. Found No. 4 rebar w/orange plastic cap #6505 0.3'  
deep, set on 3/22/1996 from monuments (No. 4 rebars w/YPC #7811) of parcel in the SW corner of the NE 1/4 of Sec. 21.  
Said found No. 4 rebar corresponds within 0.7'± to said box culvert NW.

→ NW CORNER SW 1/4 SW 1/4: No Black Hawk County Engineer reference ties exist. Set "mag" nail in A.C.C. pavement  
at midpoint of line between the SW Corner and W 1/4 Corner.

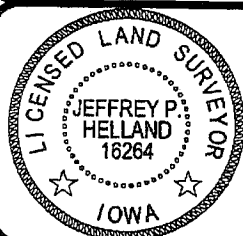
## PLAN VIEW

(SHOW A MINIMUM OF THREE REFERENCE TIES TO DURABLE PHYSICAL OBJECTS, RELEVANT MONUMENTS AND PHYSICAL  
CONDITIONS THAT WILL ENABLE RECOVERY OF THE CORNER.)HELLAND ENGINEERING & SURVEYING, LTD.  
1107 Technology Parkway  
Cedar Falls, Iowa 50613-6951  
(319)-266-0161

shiner = 8d nail &amp; 1 15/16"Ø metal shiner

(00') Recorded As

File Name: 05-162c1.dwg

I hereby certify that this land surveying document was prepared  
and the related survey work was performed by me or under my  
direct personal supervision and that I am a duly licensed Land  
Surveyor under the laws of the State of Iowa.*Jeffrey P. Helland 4/21/05*Jeffrey P. Helland  
License Number 16264

My license renewal date is December 31, 2005.

All pages or sheets are covered by this seal except:

## LIST CORNERS TO BE INDEXED

CORNER	SECTION	TOWNSHIP	RANGE
CENTER	21	90N	11W
NW CORNER SW 1/4 SW 1/4	21	90N	11W