

Reserved for County Recorder's use

2024-19267

RECORDED: 08/23/2024 11:00:28 AM

RECORDING FEE: \$7.00

REVENUE TAX: \$

COMBINED FEE: \$7.00

SANDIE L. SMITH, RECORDER
BLACK HAWK COUNTY, IOWA

* Jeffrey P. Helland, 6109 Chancellor Drive, Cedar Falls, Iowa 50613-6916, (319)-266-0161

UNITED STATES PUBLIC LAND SURVEY CORNER CERTIFICATE OF

LAND SURVEY MONUMENTS SITUATED IN SECTION NO 21, TOWNSHIP NO 90 NORTH, RANGE
NO 11 WEST OF THE FIFTH PRINCIPAL MERIDIAN, BLACK HAWK COUNTY, IOWA
PREVIOUSLY RECORDED IN MISC BK 312 PG 653

(SHOW REASON FOR PREPARING THIS CERTIFICATE, THE EVIDENCE AND DETAILED PROCEDURES USED IN ESTABLISHING THE
CORNER POSITIONS AND MONUMENTATION FOUND OR PLACED)

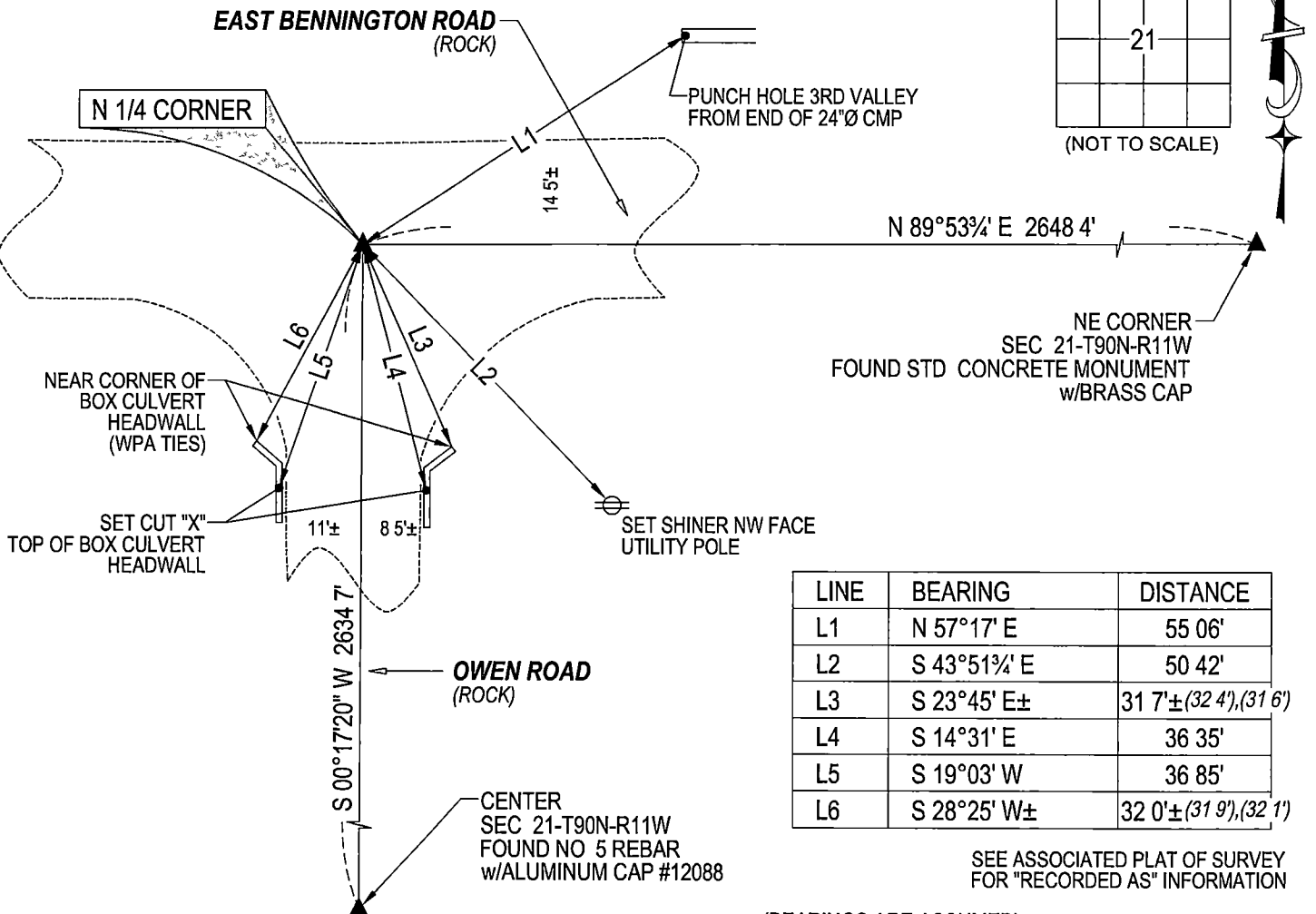
MONUMENT DESCRIPTION AND REMARKS

THE CORNER POSITION DIFFERS FROM USPLSCC MISC BOOK 312 PAGE 653 SURVEY COMPLETED IN THE NE 1/4 OF
SEC 21-T90N-R11W

→ **N 1/4 CORNER:** WPA NOTES DATED 09/21/1939 CALLS FOR [AT LOCATION INDICATED BY RANDOW LINE DUG HOLE 5 FT
SQUARE 18" LONG FOUND -1 1/4" IRON PIPE 18" LONG AND TAPERED GRADE STAKE 1"x4"x18" LOWERED ALL EVIDENCE IN
PLACE AND SET CM WITH CAP MARKED ¹⁶/₂₁ SET TOP OF CM 12" DEEP] USPLSCC RECORDED IN MISC BOOK 312 PAGE
653 DATED 09/13/1994 CALLS FOR [FD 1/2" REBAR FROM D O T TIES] SEARCHED AREA w/METAL DETECTOR AND FOUND
CALLED FOR NO 4 REBAR 0 3'± DEEP, ON EAST SIDE OF SAID REBAR FOUND STANDARD CONCRETE MONUMENT
w/BROKEN OFF TOP, SET CUT "X" IN TOP CENTER OF SAID CONCRETE MONUMENT AND UTILIZED AS THE CORNER
ALSO FOUND NO 4 REBAR (BENT NELY) 0 1' NORTH AND 0 35' EAST OF CORNER

(SHOW A MINIMUM OF THREE REFERENCE TIES TO DURABLE PHYSICAL OBJECTS, RELEVANT MONUMENTS AND PHYSICAL
CONDITIONS THAT WILL ENABLE RECOVERY OF THE CORNER)

PLAN VIEW



(BEARINGS ARE ASSUMED)



HELLAND ENGINEERING & SURVEYING, LTD
6109 Chancellor Drive
Cedar Falls, Iowa 50613-6916
(319)-266-0161

SHINER = 4d NAIL & 1 5/16"Ø METAL SHINER DRAWN BY JPH
BRASS TAG = 4d NAIL & 13/16"Ø BRASS TAG
OPC = PLASTIC CAP (O=ORANGE, R=RED, Y=YELLOW)
(00') RECORDED AS FILE NAME 24-195-28 DWG



I hereby certify that this land surveying document was prepared
and the related survey work was performed by me or under my
direct personal supervision and that I am a duly licensed
Professional Land Surveyor under the laws of the State of Iowa
Jeffrey P. Helland
License Number 16264
My license renewal date is December 31, 2025
All pages or sheets are covered by this seal except

LIST CORNERS TO BE INDEXED			
CORNER	SECTION / TOWNSHIP / RANGE		
N 1/4 CORNER	21	90N	11W
S 1/4 CORNER	16	90N	11W