

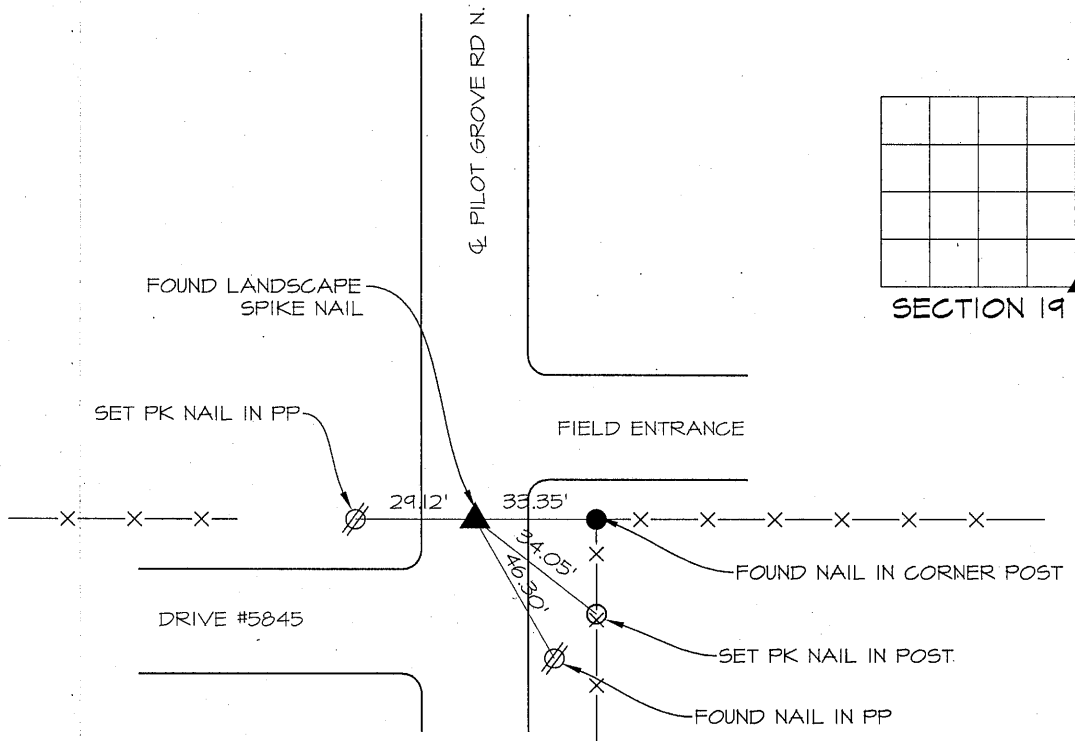
PREPARED BY PATRICK SHEPARD: CIVIL ENGINEERING CONSULTANTS, INC. - 2400 86th ST. #12 -DES MOINES, IOWA 50322

UNITED STATES PUBLIC LAND SURVEY CORNER CERTIFICATE
OF

LAND SURVEY MONUMENTS SITUATED IN SECTION 19, TOWNSHIP 90 NORTH, RANGE 11 WEST, OF THE FIFTH PRINCIPAL MERIDIAN, BLACK HAWK COUNTY, IOWA. PREVIOUS RECORD FOUND IN THE SURVEY BOOKS AT THE BLACK HAWK COUNTY ENGINEER'S OFFICE.

MONUMENT DESCRIPTION AND REMARKS:
SE CORNER, 19-90-11. PREVIOUS RECORD INDICATES CONCRETE MONUMENT WITH CAP. FOUND LANDSCAPE SPIKE NAIL IN CENTERLINE OF ROAD AND EVEN WITH FENCES TO THE EAST AND WEST. THIS CERTIFICATE IS BEING PREPARED TO DOCUMENT MONUMENTATION FOUND AND ACCEPTED AS SE CORNER AND TO PROVIDE TIES.

PLAN -VIEW



LIST CORNERS TO BE INDEXED

CORNERS	SECTION	TWP.	RANGE
SE CORNER	19	90	11
SW CORNER	20	90	11
NE CORNER	30	90	11
NW CORNER	29	90	11

LICENSED LAND SURVEYOR

PATRICK J. SHEPARD

12265

IOWA

I HEREBY CERTIFY THAT THIS LAND SURVEYING DOCUMENT WAS PREPARED AND THE RELATED SURVEY WORK WAS PERFORMED BY ME OR UNDER MY DIRECT PERSONAL SUPERVISION AND THAT I AM A DULY LICENSED LAND SURVEYOR UNDER THE LAWS OF THE STATE OF IOWA.

PShepard 1-24-13

PATRICK J. SHEPARD, IOWA LICENSE NO. 12265 DATE MY LICENSE RENEWAL DATE IS DECEMBER 31, 2013

PAGES OR SHEETS COVERED BY THIS SEAL:

THIS SHEET ONLY

E-6623

Q:\E-FILES\E-6000\E6823\dwg\Blackhawk\corner certs\90-11 CERTS_recover.dwg, 1/23/2013 4:12:53 PM, mdostalik, 1:1

(7.00)