



Doc ID: 004190390001 Type: GEN
Kind: CORNER
Recorded: 07/06/2010 at 10:52:35 AM
Fee Amt: \$9.00 Page 1 of 1
Black Hawk County Iowa
JUDITH A MCCARTHY RECORDER
File **2011-00000235**

Jeffrey P. Helland, 1107 Technology Parkway, Cedar Falls, Iowa 50613-6951, (319)-266-0161

UNITED STATES PUBLIC LAND SURVEY CORNER CERTIFICATE OF

LAND SURVEY MONUMENTS SITUATED IN SECTION NO. 19, TOWNSHIP NO. 90 NORTH, RANGE NO. 11 WEST OF THE FIFTH PRINCIPAL MERIDIAN, BLACK HAWK COUNTY, IOWA.
PREVIOUSLY RECORDED IN N/A

(SHOW REASON FOR PREPARING THIS CERTIFICATE, THE EVIDENCE AND DETAILED PROCEDURES USED IN ESTABLISHING THE CORNER POSITIONS AND MONUMENTATION FOUND OR PLACED.)

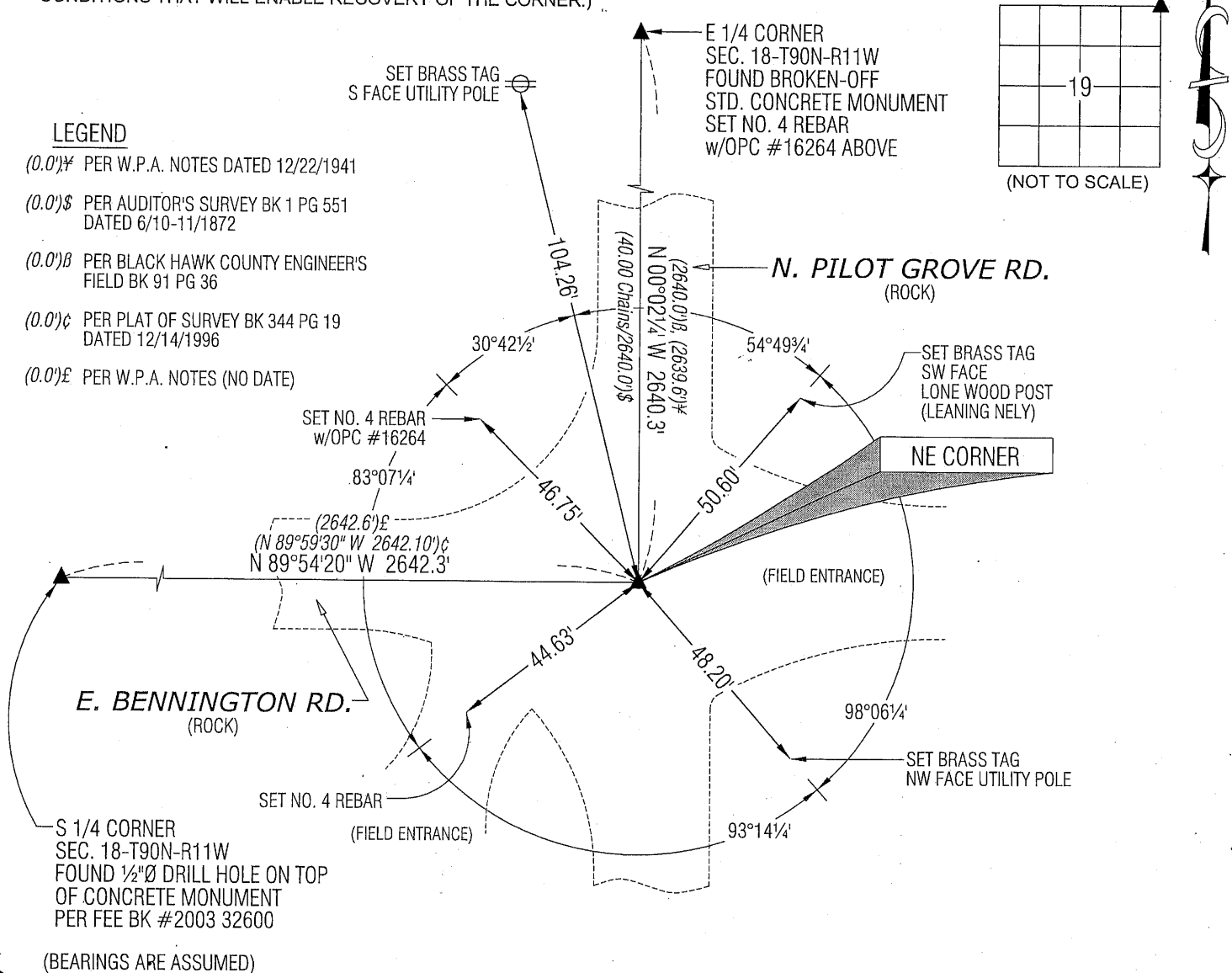
MONUMENT DESCRIPTION AND REMARKS:

NO PREVIOUS REFERENCE TIES AVAILABLE. SURVEY COMPLETED IN THE SE 1/4 OF SEC. 18-T90N-R11W.

NE CORNER: AUDITOR'S SURVEY RECORD BOOK 1 PAGE 551 DATED 6/10/1872 CALLS FOR [STONE]. BLACK HAWK COUNTY ENGINEER'S FIELD BOOK 91 PAGE 36 DATED 1930's CALLS FOR [STONE]. BLACK HAWK COUNTY ENGINEER'S REFERENCE TIES DATED 1971 CALLS FOR [FOUND CONC MON. RAISED WITH IRON PIN]. PLAT OF SURVEY MISC. BOOK 344 PAGE 19 DATED 12/14/1996 CALLS FOR [FOUND 3/8" REBAR 4" DEEP]. FOUND NO. 3 REBAR (0.3' DEEP) CORRESPONDING TO WPA NOTES AND SAID PLAT OF SURVEY.

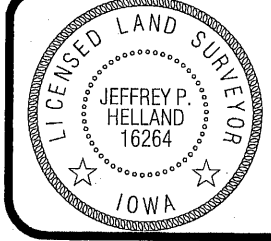
PLAN VIEW

(SHOW A MINIMUM OF THREE REFERENCE TIES TO DURABLE PHYSICAL OBJECTS, RELEVANT MONUMENTS AND PHYSICAL CONDITIONS THAT WILL ENABLE RECOVERY OF THE CORNER.)



HELLAND ENGINEERING & SURVEYING, LTD.
1107 Technology Parkway
Cedar Falls, Iowa 50613-6951
(319)-266-0161

SHINER = 8D NAIL & 1 5/16" Ø METAL SHINER
BRASS TAG = 8D NAIL & 13/16" Ø BRASS TAG
OPC = PLASTIC CAP (O=ORANGE, R=RED, Y=YELLOW)
(00) RECORDED AS FILE NAME: 10-169C3.DWG



I hereby certify that this land surveying document was prepared and the related survey work was performed by me or under my direct personal supervision and that I am a duly licensed Land Surveyor under the laws of the State of Iowa.

Jeffrey P. Helland 6/30/10
Jeffrey P. Helland
License Number 16264
My license renewal date is December 31, 2011.
All pages or sheets are covered by this seal except:

LIST CORNERS TO BE INDEXED			
CORNER	SECTION	TOWNSHIP	RANGE
NE CORNER	19	90N	11W
SE CORNER	18	90N	11W
SW CORNER	17	90N	11W
NW CORNER	20	90N	11W

9.00

Rec