

Patricia A. Jess

BLACK HAWK COUNTY RECORDER

KESS & ASSOCIATES

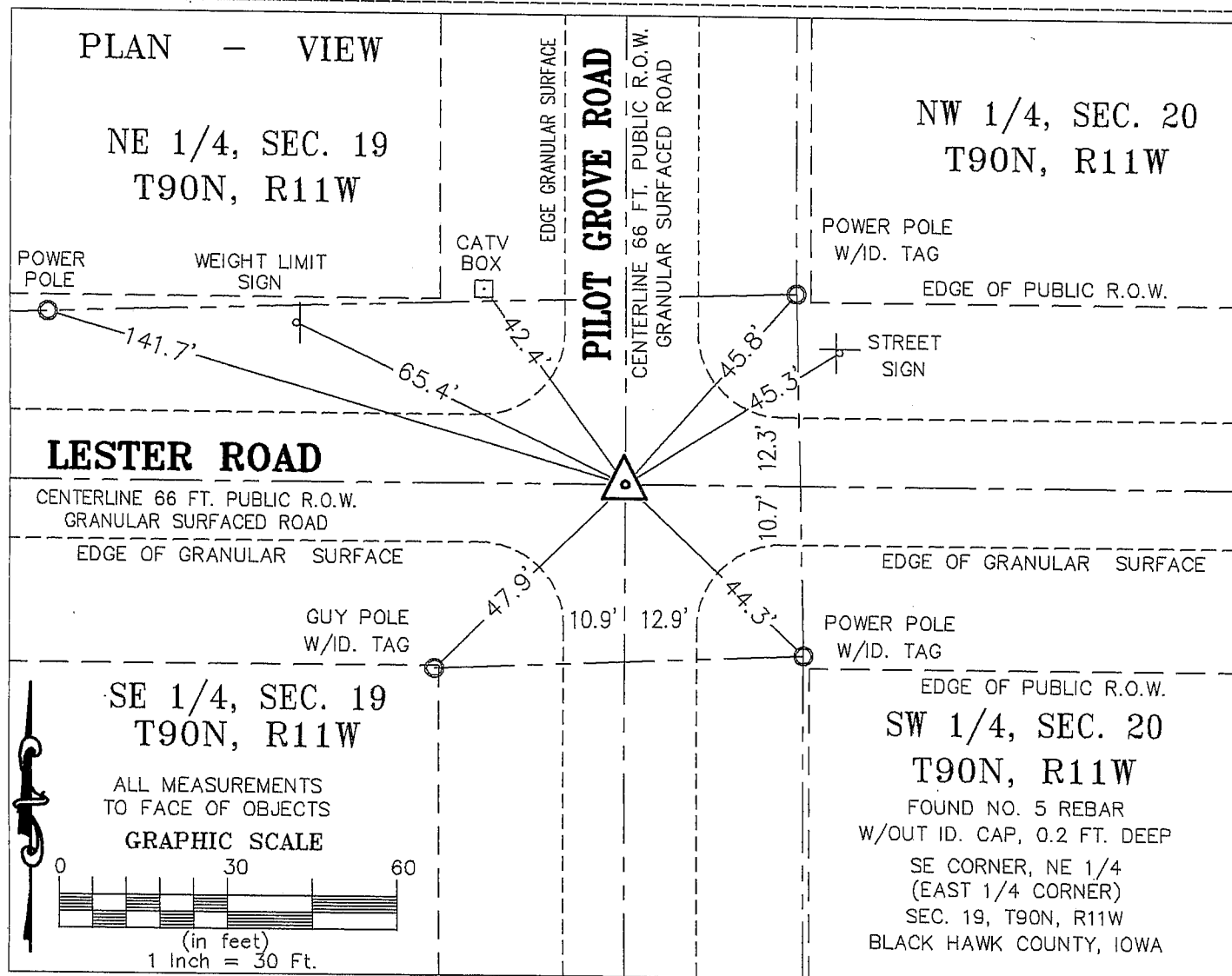
Kirk D. Eschliman, P.L.S. Iowa Lic. No. 9961, 723 Broadway Street, Waterloo, Iowa 50703 - Phone: 319-234-0509

UNITED STATES PUBLIC LAND SURVEY CORNER CERTIFICATE
OFLAND SURVEY MONUMENTS SITUATED IN SECTION NINETEEN (19), TOWNSHIP NINETY (90) NORTH
RANGE ELEVEN (11) WEST, OF THE FIFTH PRINCIPAL MERIDIAN, BLACK HAWK COUNTY, IOWA.
PREVIOUSLY RECORDED IN (NOT PREVIOUSLY RECORDED) (BOOK, PAGE, DOCUMENT NUMBER, ETC.) IN THE COUNTY RECORDER'S OFFICE.

(SHOW REASON FOR PREPARING THIS CERTIFICATE, THE EVIDENCE AND DETAILED PROCEDURES USED IN ESTABLISHING THE CORNER POSITIONS AND MONUMENTATION FOUND OR PLACED.)

MONUMENT DESCRIPTION AND REMARKS:

CURRENT SECTION CORNER CERTIFICATE NOT ON FILE IN THE BLACK HAWK COUNTY ENGINEER'S OFFICE

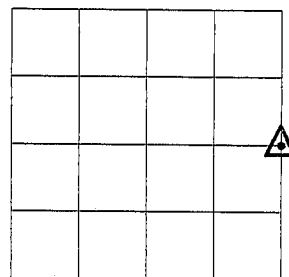
FOUND NO. 5 REBAR WITHOUT ID. CAP OR FLAGGING, 0.2 FEET BELOW SURFACE OF INTERSECTION OF
GRANULAR SURFACED LESTER AND PILOT GROVE ROADS.I HEREBY CERTIFY THAT THIS LAND SURVEYING DOCUMENT
WAS PREPARED AND RELATED SURVEY WORK WAS
WAS PERFORMED BY ME OR UNDER MY DIRECT PERSONAL
SUPERVISION AND THAT I AM A DULY LICENSED LAND
SURVEYOR UNDER THE LAWS OF THE STATE OF IOWA.*Kirk D. Eschliman*
KIRK D. ESCHLIMAN, P.L.S. IOWA LIC. NO. 9961
MY LICENSE RENEWAL DATE IS DECEMBER 31, 2005
PAGES OR SHEETS COVERED BY THIS SIGNATURE & SEAL: SHEET 1 OF 1FOR: RICHARD HAPPEL
7021 LESTER ROAD
DUNKERTON, IA 50626REQ. BY: RICHARD HAPPEL
DUNKERTON, IOWAKESS & ASSOCIATES, INC.
PROFESSIONAL LAND SURVEYORS : 723 BROADWAY, WATERLOO, IOWA 50703-5811
DATE: 03/07/2005 C.A.D.D. FILE: 05A12SCC2.DWG PROJECT NO.: 05A12

List of corners to be indexed:

Corners	Section	Township	Range
E 1/4 COR.	19	T90N	R11W
W 1/4 COR.	20	T90N	R11W

R11W

T90N



SECTION 19