



Doc ID: 004190400001 Type: GEN
Kind: CORNER
Recorded: 07/06/2010 at 10:52:41 AM
Fee Amt: \$9.00 Page 1 of 1
Black Hawk County Iowa
JUDITH A MCCARTHY RECORDER

File 2011-00000236

Jeffrey P. Helland, 1107 Technology Parkway, Cedar Falls, Iowa 50613-6951, (319)-266-0161

UNITED STATES PUBLIC LAND SURVEY CORNER CERTIFICATE OF

LAND SURVEY MONUMENTS SITUATED IN SECTION NO. 18, TOWNSHIP NO. 90 NORTH, RANGE
NO. 11 WEST OF THE FIFTH PRINCIPAL MERIDIAN, BLACK HAWK COUNTY, IOWA.

PREVIOUSLY RECORDED IN N/A

(SHOW REASON FOR PREPARING THIS CERTIFICATE, THE EVIDENCE AND DETAILED PROCEDURES USED IN ESTABLISHING THE
CORNER POSITIONS AND MONUMENTATION FOUND OR PLACED.)

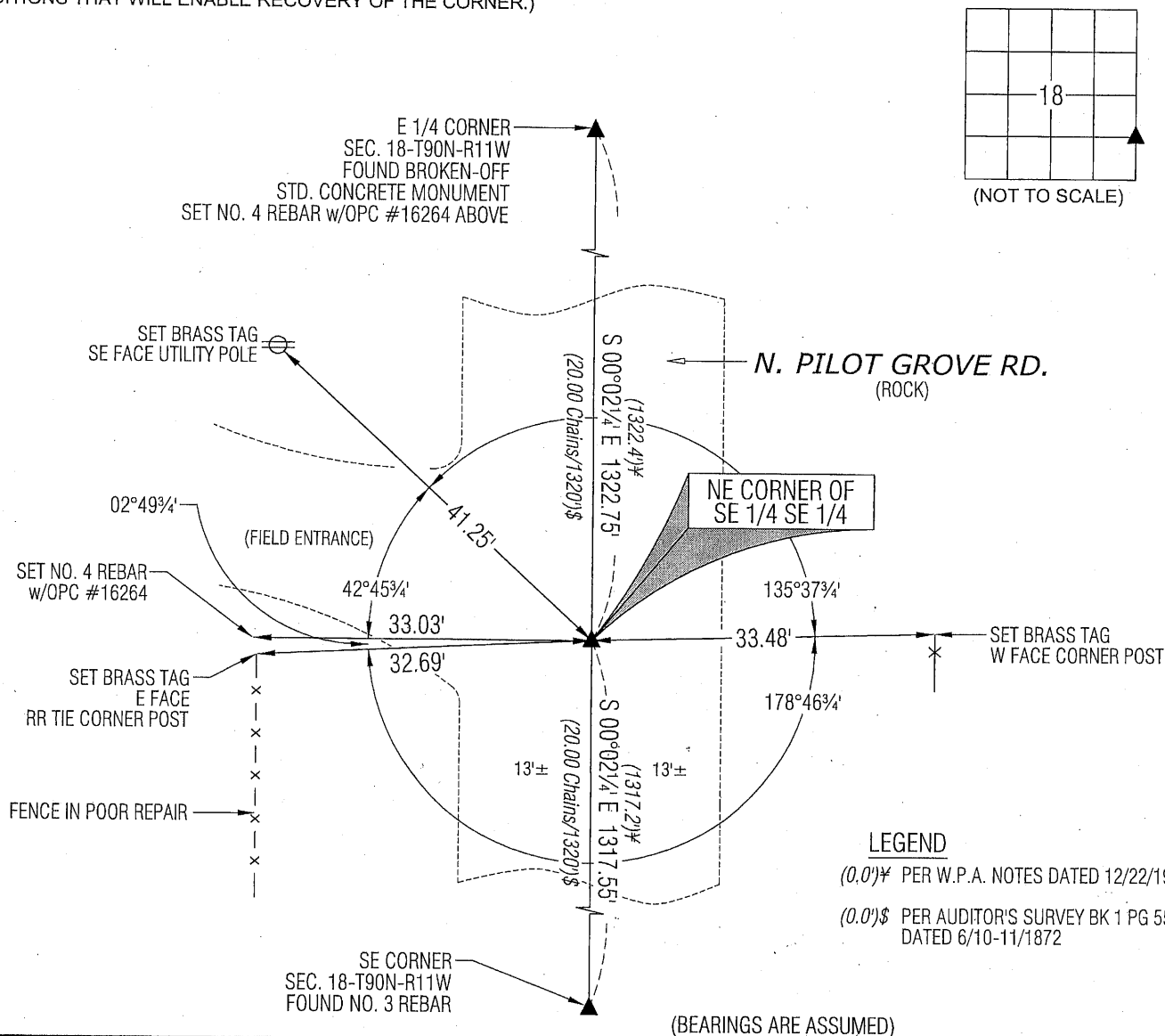
MONUMENT DESCRIPTION AND REMARKS:

NO PREVIOUS REFERENCE TIES AVAILABLE. SURVEY COMPLETED IN THE SE 1/4 OF SEC. 18-T90N-R11W.

NE CORNER OF SE 1/4 SE 1/4: AUDITOR'S SURVEY RECORD BOOK 1 PAGE 551 DATED 6/10/1872 CALLS FOR [STONE]. NO
BLACK HAWK COUNTY ENGINEER TIES AVAILABLE. EXCAVATED 3'±± HOLE 1.5'±± DEEP; PROBED IN ALL DIRECTIONS TO
DEPTH OF 4'±± FROM EDGE OF EXCAVATED HOLE, NO STONE FOUND. SET NO. 4 REBAR w/ALUMINUM CAP #16264 ON A
STRAIGHT LINE BETWEEN THE E 1/4 CORNER AND THE SE CORNER OF SECTION 18 AND AT PRORATED DISTANCE USING
W.P.A. NOTES DATED 12/22/1941. THIS CORRESPONDS TO THE EXISTING FENCE RUNNING WEST.

PLAN VIEW

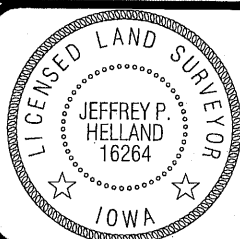
(SHOW A MINIMUM OF THREE REFERENCE TIES TO DURABLE PHYSICAL OBJECTS, RELEVANT MONUMENTS AND PHYSICAL
CONDITIONS THAT WILL ENABLE RECOVERY OF THE CORNER.)



(BEARINGS ARE ASSUMED)

HES HELLAND ENGINEERING & SURVEYING, LTD.
1107 Technology Parkway
Cedar Falls, Iowa 50613-6951
(319)-266-0161

SHINER = 8D NAIL & 1 5/16\"Ø METAL SHINER
BRASS TAG = 8D NAIL & 13/16\"Ø BRASS TAG
OPC = PLASTIC CAP (O=ORANGE, R=RED, Y=YELLOW)
(00') RECORDED AS FILE NAME: 10-169C2.DWG



I hereby certify that this land surveying document was prepared
and the related survey work was performed by me or under my
direct personal supervision and that I am a duly licensed Land
Surveyor under the laws of the State of Iowa.

Jeffrey P. Helland 6/30/10
Jeffrey P. Helland
License Number 16264

My license renewal date is December 31, 2011.
All pages or sheets are covered by this seal except:

LIST CORNERS TO BE INDEXED

CORNER	SECTION	TOWNSHIP	RANGE
NE COR. SE 1/4 SE 1/4	18	90N	11W
SE COR. NE 1/4 SE 1/4	18	90N	11W
SW COR. NW 1/4 SW 1/4	17	90N	11W
NW COR. SW 1/4 SW 1/4	17	90N	11W

9.00

Rev.