



Doc ID: 004190410001 Type: GEN
Kind: CORNER
Recorded: 07/06/2010 at 10:52:47 AM
Fee Amt: \$9.00 Page 1 of 1
Black Hawk County Iowa
JUDITH A MCCARTHY RECORDER

File 2011-00000237

Jeffrey P. Helland, 1107 Technology Parkway, Cedar Falls, Iowa 50613-6951, (319)-266-0161

UNITED STATES PUBLIC LAND SURVEY CORNER CERTIFICATE OF

LAND SURVEY MONUMENTS SITUATED IN SECTION NO. 18, TOWNSHIP NO. 90 NORTH, RANGE
NO. 11 WEST OF THE FIFTH PRINCIPAL MERIDIAN, BLACK HAWK COUNTY, IOWA.
PREVIOUSLY RECORDED IN FEE BK #2003 32599

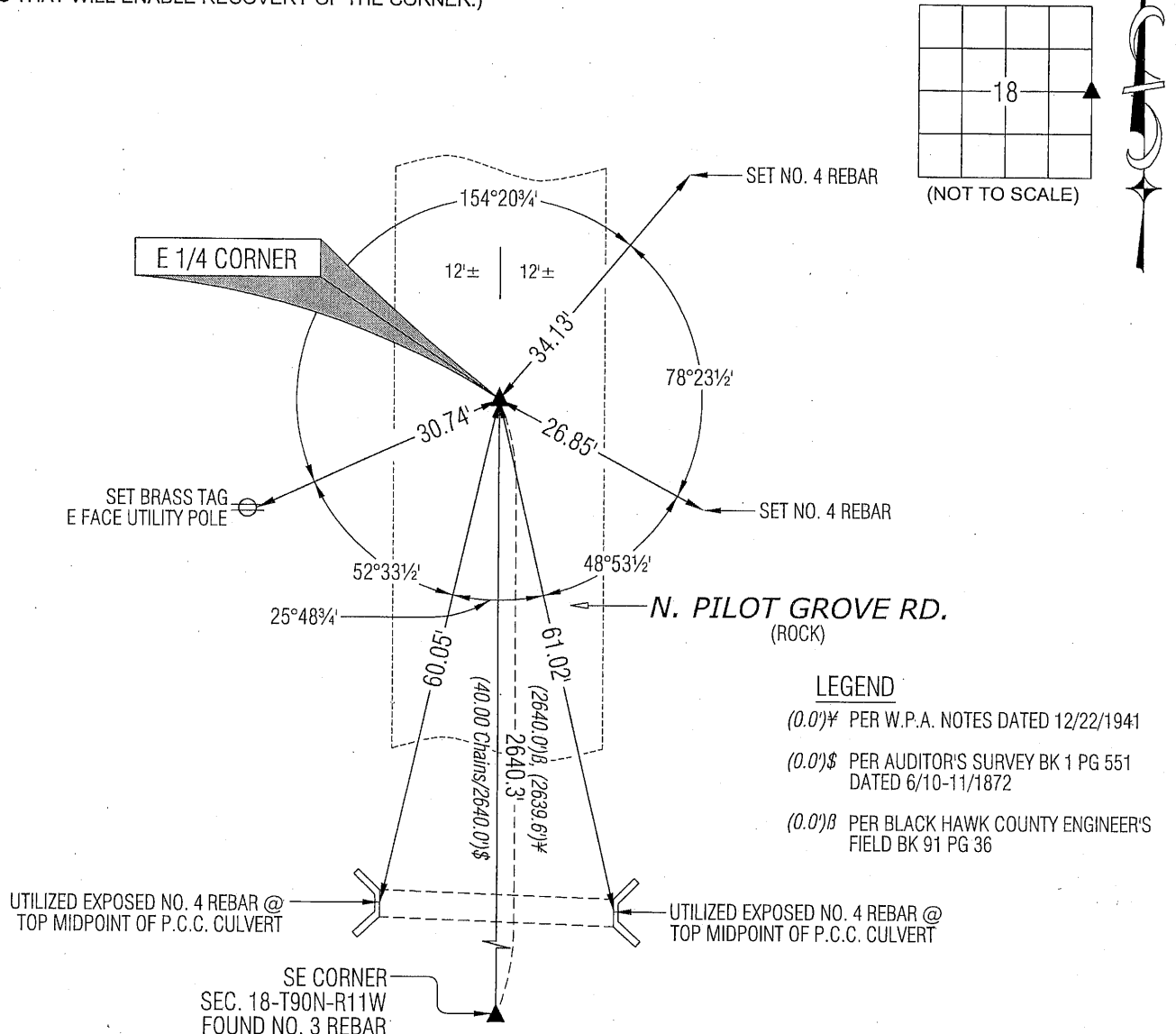
(SHOW REASON FOR PREPARING THIS CERTIFICATE, THE EVIDENCE AND DETAILED PROCEDURES USED IN ESTABLISHING THE
CORNER POSITIONS AND MONUMENTATION FOUND OR PLACED.)

MONUMENT DESCRIPTION AND REMARKS: USPLSCC FEE BK #2003 32599 MONUMENTATION IS DIFFERENT.
SURVEY COMPLETED IN THE SE 1/4 OF SEC. 18-T90N-R11W.

→ E 1/4 CORNER: AUDITOR'S SURVEY RECORD BOOK 1 PAGE 551 DATED 6/10/1872 CALLS FOR [STONE]. BLACK HAWK
COUNTY ENGINEER'S FIELD BOOK 91 PAGE 36 DATED 1930's CALLS FOR [STONE]. BLACK HAWK COUNTY ENGINEER'S
REFERENCE TIES CALLS FOR [FOUND LIMESTONE & IRON BAR, OK NOV. 1958] REFERENCE TIES INDICATE STD. CONCRETE
MONUMENT w/BRASS CAP SET. PLAT OF SURVEY FEE BOOK #2003 33782 DATED 3/27/2003 CALLS FOR [FD. 1/2" SQ. PIN
1.2 FT. DEEP]. USPLSCC FEE BOOK #2003 32599 DATED 5/2/2003 CALLS FOR [FOUND 1/2" SQUARE PIN 6" DEEP]. FOUND
BROKEN-OFF STD. CONCRETE MONUMENT (1.7' DEEP). SET NO. 4 REBAR ON NORTH SIDE OF MONUMENT FOR MAGNETIC
DETECTION. SET NO. 4 REBAR (1.5' LONG) w/ALUMINUM CAP #16264 ABOVE SAID MONUMENT. CALLED FOR 1/2" SQUARE
PIN COULD NOT BE FOUND.

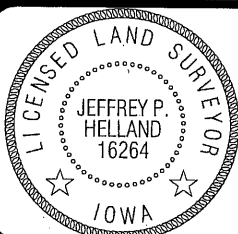
PLAN VIEW

(SHOW A MINIMUM OF THREE REFERENCE TIES TO DURABLE PHYSICAL OBJECTS, RELEVANT MONUMENTS AND PHYSICAL
CONDITIONS THAT WILL ENABLE RECOVERY OF THE CORNER.)



HELLAND ENGINEERING & SURVEYING, LTD.
1107 Technology Parkway
Cedar Falls, Iowa 50613-6951
(319)-266-0161

SHINER = 8D NAIL & 1 5/16"Ø METAL SHINER
BRASS TAG = 8D NAIL & 13/16"Ø BRASS TAG
OPC = PLASTIC CAP (O=ORANGE, R=RED, Y=YELLOW)
(00)' RECORDED AS FILE NAME: 10-169C1.DWG



I hereby certify that this land surveying document was prepared
and the related survey work was performed by me or under my
direct personal supervision and that I am a duly licensed Land
Surveyor under the laws of the State of Iowa.

Jeffrey P. Helland 6/30/10
Jeffrey P. Helland
License Number 16264
My license renewal date is December 31, 2011.
All pages or sheets are covered by this seal except:

LIST CORNERS TO BE INDEXED

CORNER	SECTION	TOWNSHIP	RANGE
E 1/4 CORNER	18	90N	11W
W 1/4 CORNER	17	90N	11W

7.00

Res.