

Jeffrey P. Helland, 1107 Technology Parkway, Cedar Falls, Iowa 50613-6951, (319)-266-0161

# UNITED STATES PUBLIC LAND SURVEY CORNER CERTIFICATE OF

LAND SURVEY MONUMENTS SITUATED IN SECTION NO. 18, TOWNSHIP NO. 90 NORTH, RANGE NO. 11 WEST OF THE FIFTH PRINCIPAL MERIDIAN, BLACK HAWK COUNTY, IOWA.  
PREVIOUSLY RECORDED IN N/A

(SHOW REASON FOR PREPARING THIS CERTIFICATE, THE EVIDENCE AND DETAILED PROCEDURES USED IN ESTABLISHING THE CORNER POSITIONS AND MONUMENTATION FOUND OR PLACED.)

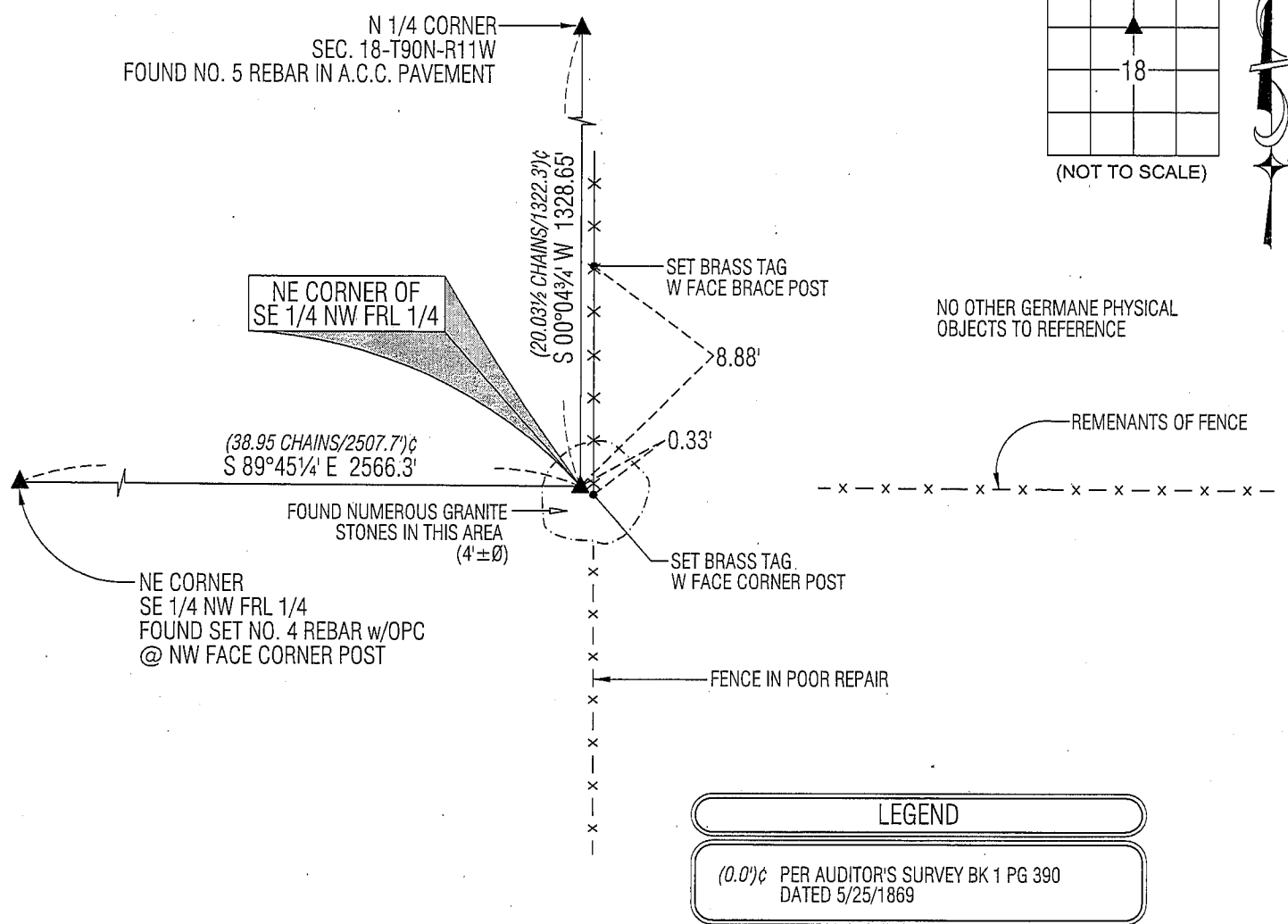
## MONUMENT DESCRIPTION AND REMARKS:

NO USPLSCC ON FILE. SURVEY COMPLETED IN THE SW FRL 1/4 NW FRL 1/4 OF SEC. 18-T90N-R11W.


→ **NE CORNER SE 1/4 NW FRL 1/4:** AUDITOR'S SURVEY BOOK 1 PAGE 390 DATED 5/25/1869 CALLS FOR [STONE]. NO BLACK HAWK COUNTY ENGINEER'S REFERENCE TIES AVAILABLE. FOUND NUMEROUS GRANITE STONES AROUND CORNER POST, UNABLE TO IDENTIFY ONE SPECIFIC. SET NO. 4 REBAR w/OPC #16264 @ AN INTERSECTION USING AN EXTENSION OF THE FENCE TO THE EAST AND AT THE NW FACE OF THE CORNERPOST WITH FENCING RUNNING N-S.

## PLAN VIEW

(SHOW A MINIMUM OF THREE REFERENCE TIES TO DURABLE PHYSICAL OBJECTS, RELEVANT MONUMENTS AND PHYSICAL CONDITIONS THAT WILL ENABLE RECOVERY OF THE CORNER.)

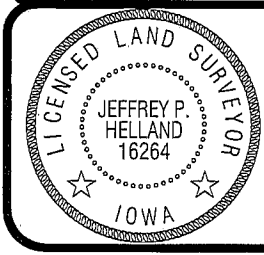


(BEARINGS ARE ASSUMED)



**HELLAND ENGINEERING & SURVEYING, LTD.**  
1107 Technology Parkway  
Cedar Falls, Iowa 50613-6951  
(319)-266-0161

SHINER = 8D NAIL & 1 5/16"Ø METAL SHINER  
BRASS TAG = 13/16"Ø BRASS TAG  
OPC = PLASTIC CAP (O=ORANGE, R=RED, Y=YELLOW)  
(00') RECORDED AS FILE NAME: 09-241C3.DWG



I hereby certify that this land surveying document was prepared and the related survey work was performed by me or under my direct personal supervision and that I am a duly licensed Land Surveyor under the laws of the State of Iowa.

*Jeffrey P. Helland* 10/7/09  
Jeffrey P. Helland  
License Number 16264  
My license renewal date is December 31, 2009.  
All pages or sheets are covered by this seal except:

**LIST CORNERS TO BE INDEXED**

CORNER	SECTION	TOWNSHIP	RANGE
NE COR. SE 1/4 NW 1/4	18	90N	11W
SE COR. NE 1/4 NE 1/4	13	90N	12W
SW COR. NW 1/4 NW 1/4	18	90N	12W
NW COR. SW 1/4 NW 1/4	18	90N	12W

Rec.