

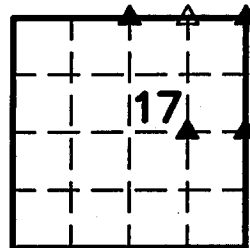
ACKLEY IA 50601

Z

Judith A. McCarthy, County Recorder

Scott A. Steinfadt LS, Ryken Engineering, 711 Park Avenue, Ackley, Iowa 50601 - Ph. 641-847-3273 - Fax 641-847-2303

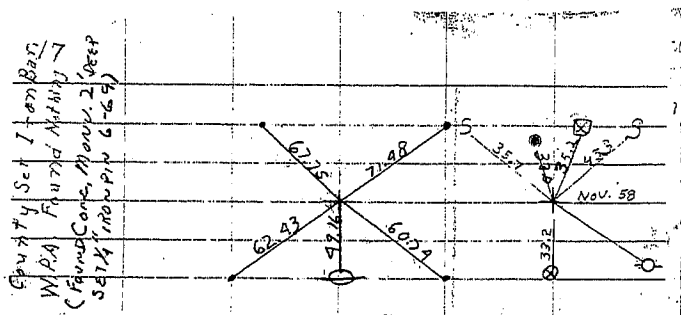
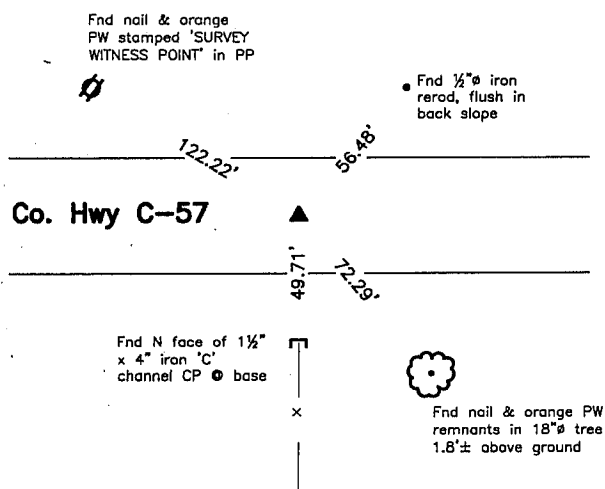
Land Survey Monuments situated in Section 17, Township 90 North,
Range 11 West, of the Fifth Principal Meridian, **Black Hawk** County, Iowa,
Previously recorded in (see below) in County Recorder's Office
N¼ Cor and NE Cor – Bk 2003 Pg 23869, NE Cor. – Doc. #2007004061,
E¼ Cor – Doc. #2007004062
NW Cor. E½ NE¼ and SW Cor. E½ NE¼ – Not Applicable
These corners were used for a survey in this section for Ronald L and Donald L. Salisbury
and Darlene A. Nation.



R/W = Iron ROW Rail
SFP = Steel 'T' Post
SW = Nail with Square Metal Washer
TP = Telephone Pedestal
TW = Nail with Round Metal Washer
WFP = Wood Fence Post
X = X Nails

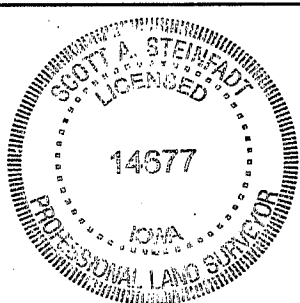


CO ENGR'S RECORD TIES



This certificate is being prepared because there are changes to ties of record.

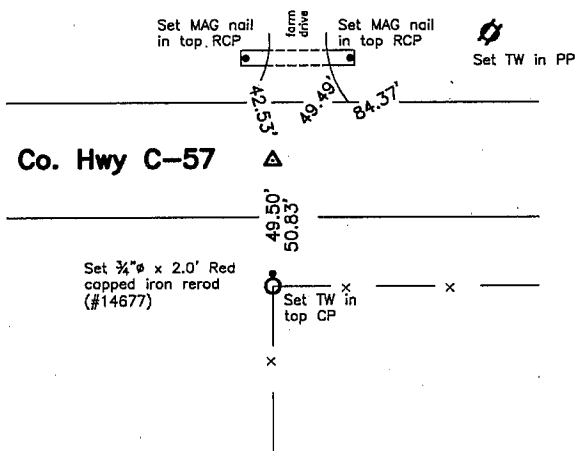
P:\BOB\BLACKHAWKCO\S179011\SALISBURY4510\dwg\4510concert.dwg



Pages or sheets covered by this seal: 1, 2 & 3

| Corners | | Section | Twp | Range |
|---------|--------|-----------|------|-------|
| N¼ | Corner | 17 | T90N | R11W |
| NW | Corner | E½ NE¼ 17 | T90N | R11W |
| SW | Corner | E½ NE¼ 17 | T90N | R11W |
| NE | Corner | 17 | T90N | R11W |
| E¼ | Corner | 17 | T90N | R11W |

NW Cor. E½ NE¼



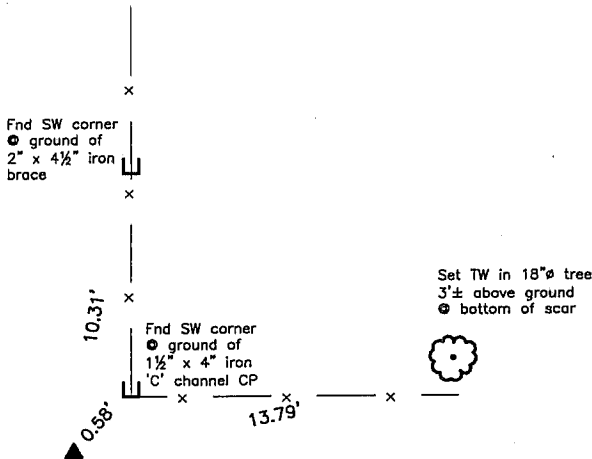
Monument Description, Remarks, and Plan View:

NW Cor. E½ NE¼ – History of Corner =
 1872, Jun 10 & 11 – 'Stone' per Co Aud's Survey Record Book 1, page 551.
 Co Engr's previous and current records do not indicate that corner is monumented.

Corner Recovery = Searched area with metal detector and found nothing. Therefore, since the Co Engr's 1941 WPA Field Book does not show record of monument and since roadway fill makes digging for 1872 stone impractical, set 'Survey Mark' nail, flush on-line and equidistance between the N¼ Cor. and NE Cor and used it as the correct corner. Nail is 0.2'± N of centerline of ACC road E-W, in-line with fenceline S. All ties are plumb distance.

This certificate is being prepared because there are no certificates on file for this corner.

SW Cor. E½ NE¼



Monument Description, Remarks, and Plan View:

SW Cor. E½ NE¼ – History of Corner =
 1872, Jun 10 & 11 – 'Stone' per Co Aud's Survey Record Book 1, page 551.
 Co Engr's previous and current records do not indicate that corner is monumented.

Corner Recovery = Excavated 2.0'± x 3.5'± x 3.0' deep hole by 1½" x 4" 'C' channel iron corner post and found 9" x 13" x 19" tan stone 2.5' deep 0.5'± W and 0.5'± S of fencelines E and N. Monument found matches that of record. Therefore, set ¾" x 2.0' aluminum capped iron rerod (#14677) stamped '¼-¼ COR' on high point of stone to raise up monumentation and used it as the correct corner. Rerod is 0.5' deep. All ties are plumb distance.

This certificate is being prepared because there are no certificates on file for this corner.

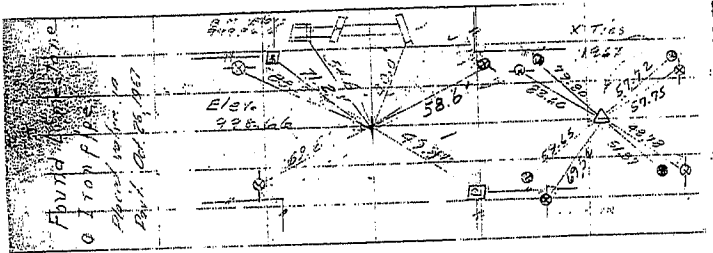
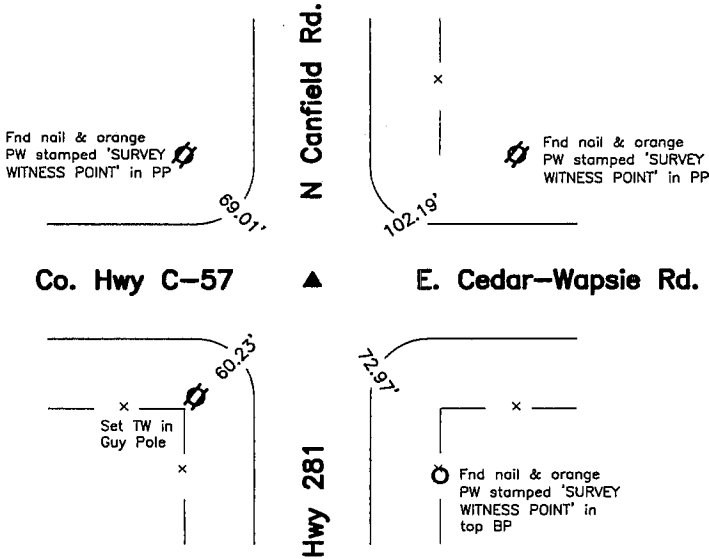
Legend

| | | |
|---|--|------------------------------------|
| BC = Nail with Bottle Cap | ID = Inside Diameter | R/W = Iron ROW Rail |
| BP = Brace Post | OD = Outside Diameter | SFP = Steel 'T' Post |
| CP = Corner Post | PP = Power Pole | SW = Nail with Square Metal Washer |
| CMP = Corrugated Metal Pipe | PW = Nail with Plastic Washer | TP = Telephone Pedestal |
| CM = 4" Sq Concrete Monument with | RCP = Reinforced Concrete Pipe | TW = Nail with Round Metal Washer |
| 1/2"Ø iron rerod in center (tie to rerod) | RH = Red Head (Nail in wire) | WFP = Wood Fence Post |
| CX = Cut 'X' | ROW = Right of Way | X = X Nails |
| GP = Gate Post | RW = Nail with Reflective Round Washer | |



NE Cor.

CO ENGR'S RECORD TIES



Monument Description, Remarks, and Plan View:

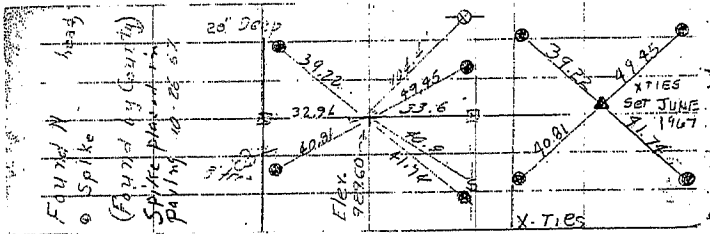
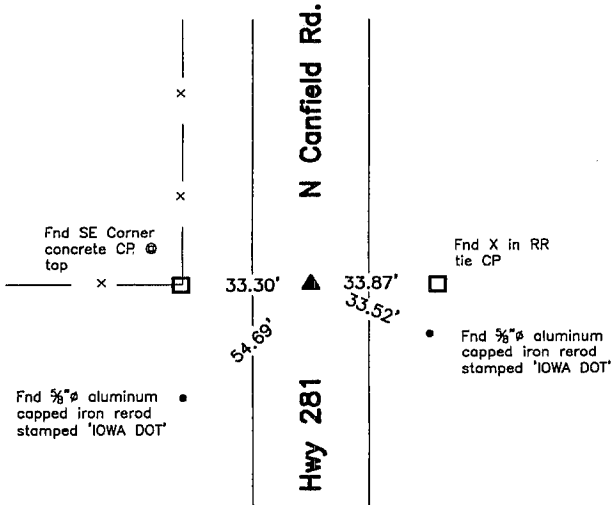
NE Cor. - History of Corner =
1872, Jun 10 & 11 - 'Stone' per Co Aud's Survey Record Book 1, page 551.
No Date - 'Stone' per Co Aud's Survey Record Book 1, page 558.
No Date - 'found iron pipe 3/4 x 22 1/2" limestone 2"x4 1/2"x5 1/2"' per Co Engr's WPA Field Book, page 35.
2002, 03/28 - Co. Rec's Fee Book # 2002 33227 indicates usage of corner but does not indicate type of monumentation.
2002, 04/02 - 'FOUND SPIKE NAIL' per Co Rec's Document Number: 2007004061.
2003, 2/18 - 'FOUND NAIL SHAFT IN A.C.C. PAVEMENT' per Co. Rec's Fee Book # 2003 23868.
2003, 2/18 - 'FOUND BROKEN-OFF NAIL SHAFT 0.2' BELOW A.C.C. PAVEMENT SURFACE' per Co. Rec's Fee Book # 2003 23869.
2004, 1-12 - '(NAIL)' per Co. Rec's Fee Book # 2004 21639.
No date - 'SET NAIL & WASHER' per IDOT records obtained from District 2 Office in Mason City.
Co Engr's previous records indicate that corner is monumented with 'Found Limestone, Iron pipe, Placed valve in Pav't' with ties as shown above.
Co Engr's current records indicate that corner is monumented with 'FOUND SPIKE NAIL' per Co Rec's Document Number: 2007004061.

Corner Recovery = Searched area with metal detector and found 'Survey Mark' nail in aluminum washer stamped 'IDOT SEC COR', flush in centerline of ACC roads N-S and E-W. Location of monument found matches that of record and record ties are within reason, therefore, used nail as the correct corner. All ties are plumb distance.

This certificate is being prepared because there is a change to monumentation of record.

E 1/4 Cor.

CO ENGR'S RECORD TIES



Monument Description, Remarks, and Plan View:

E 1/4 Cor. - History of Corner =
1872, Jun 10 & 11 - 'stone' per Co Aud's Survey Record Book 1, page 551.
No date - 'stone' per Co. Aud's Survey Record Book 1, page 558.
No Date - 'found bridge spike 1/4x10" "n"head 5 1/2"x6"x12" per Co Engr's WPA Field Book, page 35.
1988, 3/19 - 'Fo. Pin' per Co. Rec's Book 281, page 389.
1994, 7-8 - 'Fd 7/8" Pin' per IDOT Field Book, page 27 obtained from District 2 Office in Mason City.
2002, 03/28 - Co. Rec's Fee Book# 2002 33227 indicates usage of corner but not type of monumentation.
2002, 04/02 - 'FOUND 3/8" IRON PIN' per Co Rec's Document Number: 2007004062.
No date - 'SET NAIL & WASHER' per IDOT records obtained from District 2 Office in Mason City.
Co Engr's previous records indicate that corner is monumented with 'Found "N"head, Spike, and Spike placed in paving' with ties as shown above.
Co Engr's current records indicate that corner is monumented with 'FOUND 3/8" IRON PIN' per Co Rec's Document Number: 2007004062.

Corner Recovery = Searched area with metal detector and found 'Survey Mark' nail in aluminum washer stamped 'IDOT SEC COR', flush in centerline of ACC road N-S and in-line with fenceline W. Location of monument matches that of record and record ties are within reason. Therefore, used 'Survey Mark' nail as the correct corner. All ties are plumb distance.

This certificate is being prepared because there are not three valid ties of record.

Legend

- | | | |
|---------------------------------------|--|------------------------------------|
| BC = Nail with Bottle Cap | ID = Inside Diameter | R/W = Iron ROW Rail |
| BP = Brace Post | OD = Outside Diameter | SFP = Steel 'T' Post |
| CP = Corner Post | PP = Power Pole | SW = Nail with Square Metal Washer |
| CMP = Corrugated Metal Pipe | PW = Nail with Plastic Washer | TP = Telephone Pedestal |
| CM = 4" Sq Concrete Monument with | RCP = Reinforced Concrete Pipe | TW = Nail with Round Metal Washer |
| 1/2"Ø Iron rod in center (tie to rod) | RH = Red Head (Nail in wire) | WFP = Wood Fence Post |
| CX = Cut 'X' | ROW = Right of Way | X = X Nails |
| GP = Gate Post | RW = Nail with Reflective Round Washer | |

