

ENV VJ

UNITED STATES PUBLIC LAND SURVEY CORNER CERTIFICATE

OF

90 N. (J.T.)

Land Survey Monuments situated in Section 15, Township 87 N, Range 11 W, of the Fifth Principal Meridian, Black Hawk County, Iowa
Previously recorded in Book N/A, Page .

Show reason for preparing this certificate, the evidence and detailed procedures used in establishing the corner positions and monumentation found or placed.)

Monument Description and Remarks: Corner was used for a survey in the SW 1/4 of 15-90-11.

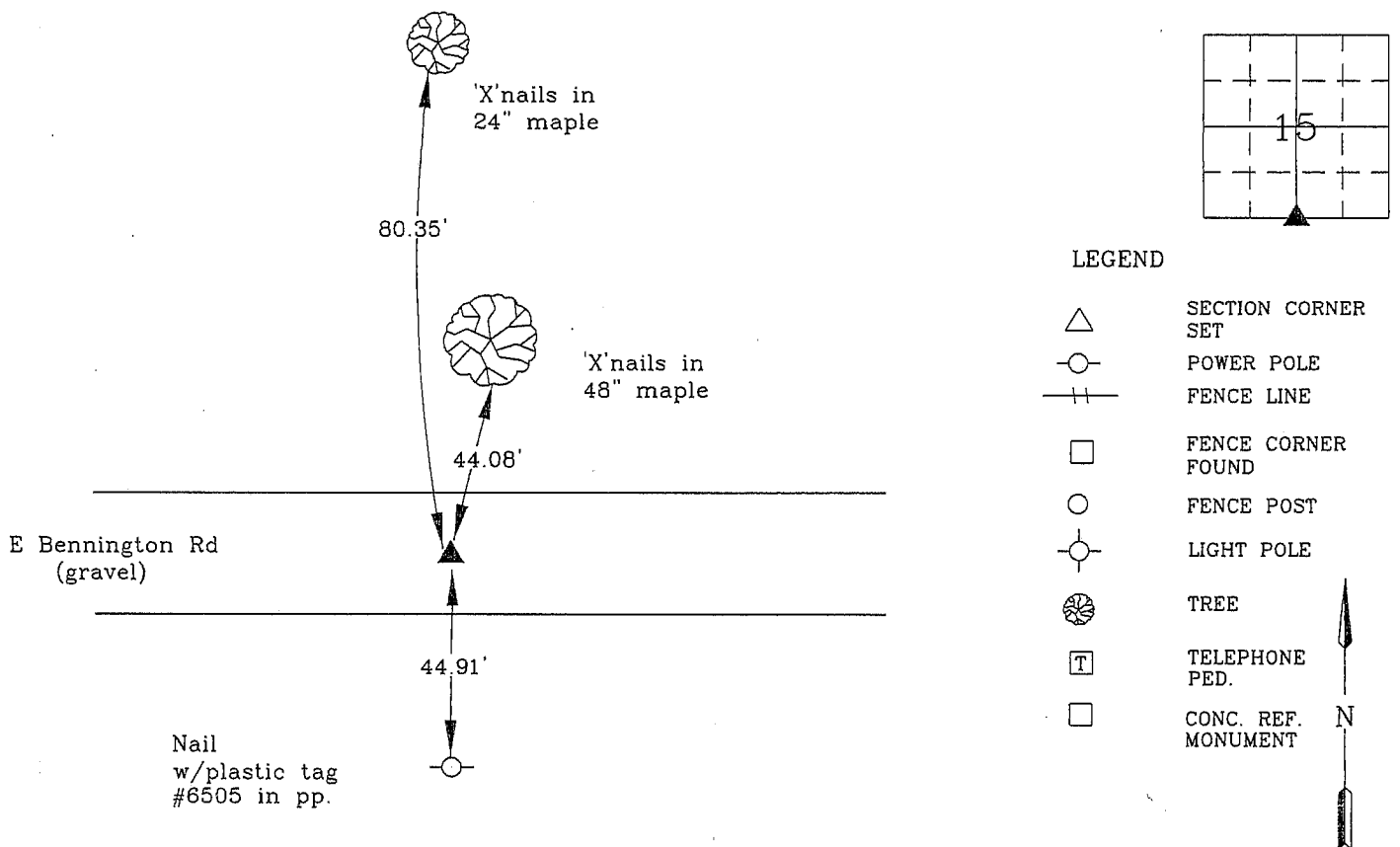
County Engineer found iron pin 1" deep in 1958. Searched area with magnetic locator and found

5/8" iron pin in CL 2" deep.

No Corner Certificate Previously Recorded

PLAN - VIEW

(Show a minimum of three reference ties to durable physical objects, relevant monuments and physical conditions recovery of the corner.)



I hereby certify that this land surveying document was prepared and the related survey work was performed by me or under my direct personal supervision and that I am a duly licensed Land Surveyor under the laws of the State of Iowa.



Wendell J. Lupkes 9-9-09
WENDELL J. LUPKES, L.S. DATE

License number 12088

My license renewal date is December 31, 2010

Pages or sheets covered by this seal: 1

List Corner to be Indexed

Corner	Section	Twp	Range
S Qtr. Cor	15	90 N	11 W



VJ Engineering
1501 Technology Parkway
Cedar Falls, Iowa - 319-266-5829

SECTION CORNER
REFERENCE TIES

scale
NONE
drawn by
MAK
date
8/10/09