

PREPARED BY: ~~BLACK HAWK COUNTY ENGINEERS OFFICE~~  
316 E. FIFTH STREET, ROOM 211 WATERLOO, IOWA 50703

PH.# (319) 833-3008  
FAX.# (319) 833-3139  
SLSI 9-94  
BHCO 03-09

UNITED STATES PUBLIC LAND SURVEY CORNER CERTIFICATE OF  
Land Survey Monuments situated in Section 15, Township 90 N,  
Range 11 W, of the Fifth Principal Meridian, BLACK HAWK County, Iowa.  
Previously recorded in Misc. Book 346, Page 229, in County Recorder's Office.  
(Show reason for preparing this certificate): The corner monument has been Replaced or Modified, per Ia. Code 355.11(1)(c)

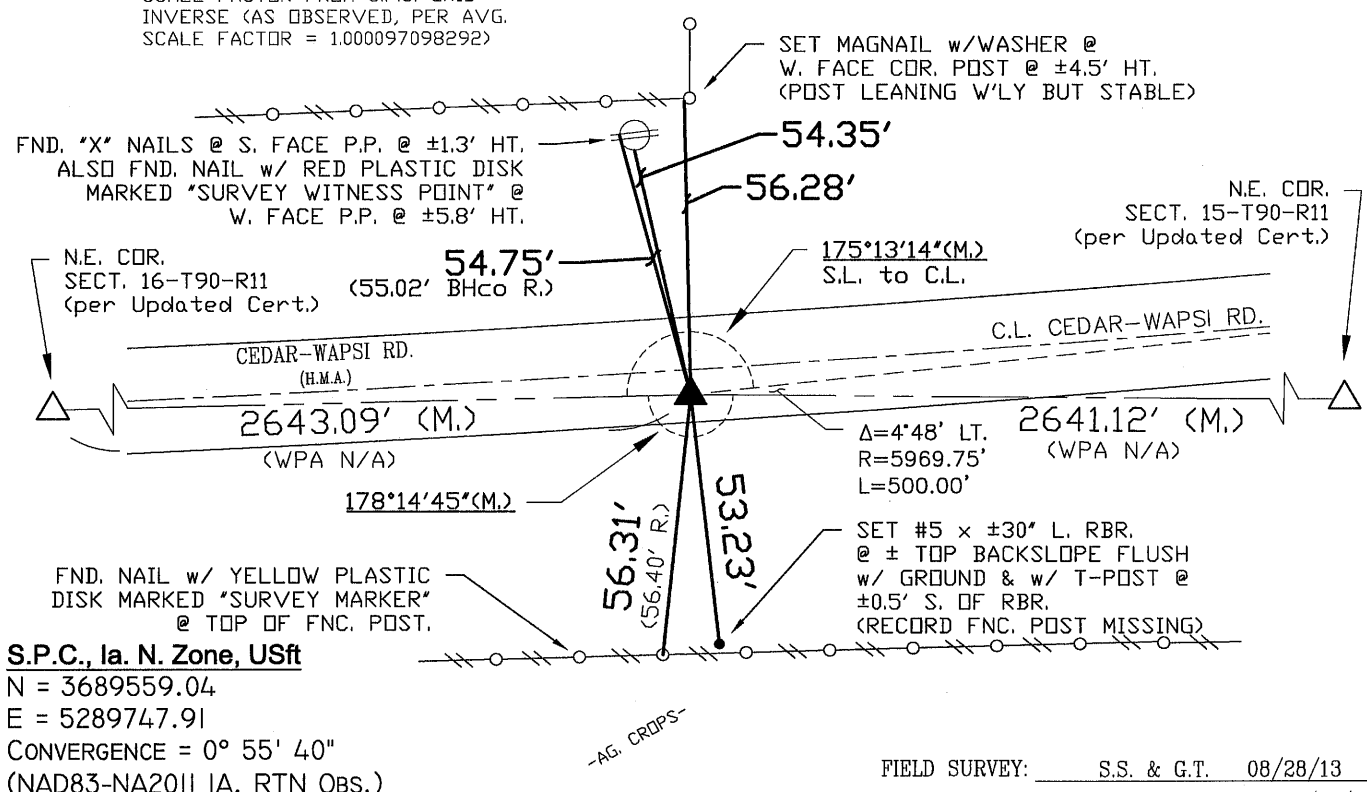
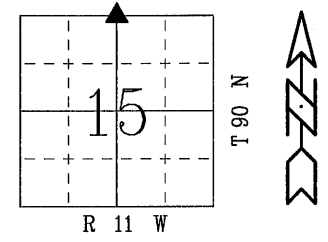
(Evidence and detailed procedures used in establishing the corner position(s) and monumentation found or placed.)  
Monument Description and Remarks: N. 1/4 COR. = P.I.  
CORNER RESET & TIES UPDATED PER PAVEMENT WIDENING AND H.M.A. RESURF. PROJECT  
LFM-1601--7X-07. PRIOR TO RESURF. PROJECT, FOUND 1/2" (#4) REBAR PER CURRENT  
RECORD AND TEMP. REF. COR. LOCATION PER RTK GPS. AFTER 6" P.C.C. CRACK & SEAL,  
FOUNDING REMAINED @ ± RTK REFERENCE LOCATION w/ NO FURTHER EXCAVATION. PVMT.  
RESURFACED w/ +5" (3.5" BASE & 1.5" SURF.) H.M.A. PAVING. AFTER H.M.A. RESURFACE,  
RESET CORNER WITH 6" L. MAG SPIKE w/ MTL. WASHER (PLS #15748) LOCATED @ ±5.2'  
SOUTH OF C.L. H.M.A. JOINT AND ALIGNED ±1.0' WEST OF R.O.W. COR. POST TO NORTH OF  
CORNER.

PLAN VIEW  
"NOT TO SCALE"

BHco Hist. Ties: BK. #1003 p.15 T90-R11  
FIELD BOOK: Ties per Topcon 7003i #Z0115

(Show a minimum of three reference ties to durable physical objects, relevant monuments and physical conditions that will enable recovery of the corner.)


- 1.) TIES PER EDM MEASURE IN EITHER PRISM "OR" NON-PRISM MODE, WHILE UTILIZING "INDIRECT" MEASURE, WITH ALL DISTANCES PLUMB/HORIZ. (HD), UNLESS DENOTED.
- 2.) SECTION LINE MEASURE REFERS TO "LOCAL GROUND" DIST. AND INCLUDES ELLIPSOIDAL (COMBINED) SCALE FACTOR FROM S.P.C. GRID INVERSE (AS OBSERVED, PER AVG. SCALE FACTOR = 1.000097098292)



S.P.C., Ia. N. Zone, USft  
N = 3689559.04  
E = 5289747.91  
CONVERGENCE = 0° 55' 40"  
(NAD83-NA2011 IA. RTN OBS.)

FIELD SURVEY: S.S. & G.T. 08/28/13  
PREPARED BY: S.S. & G.T. 11/19/13

CERTIFICATION



I hereby certify that this land surveying document was prepared and the related survey work was performed by me or under my direct personal supervision and that I am a duly licensed Land Surveyor under the laws of the State of Iowa.

*Geoffry Allen Tinker* 01/22/2014  
Geoffry Allen Tinker (date)  
License Number 15748  
My license renewal date is December 31, 2014  
Pages or sheets covered by this seal:  
This Land Corner Certificate Only.

LIST CORNERS TO BE INDEXED			
Corner	Section -	Township -	Range
N. 1/4 Cor.	15	90 N	11 W
S. 1/4 Cor.	10	90 N	11 W

INDEX OF ABBREVIATIONS			
(M) = "Measured" Dimension	"NP" = Reflectorless EDM Meas.		
(P) = "Platted" Dimension	"MLM" = Indirect Measure		
(R) = "Record" Dimension	"CM" = Concrete Monument		
(C) = "Calculated" Dimension	"SM" = Survey Marker Spike/Tag		
"IGS" = Iowa Geodetic Survey	"PK" = PK/MAG Nail Brand Style		
"WPA" = Works Progress Admin. Survey			
"G" = per George Miller Survey (BHco Surveyor 1858-1860)			
"B" = per John Ball Survey (BHco Surveyor 1866-1891)			
"N" = per Nathan Barber Survey (BHco Surveyor 1908-1931)			