

PREPARED BY: ~~BLACK HAWK COUNTY ENGINEERS OFFICE~~  
316 E. FIFTH STREET, ROOM 211 WATERLOO, IOWA 50703

PH.# (319) 833-3008  
FAX# (319) 833-3139  
SLSI 9-94  
BHCO 03-09

UNITED STATES PUBLIC LAND SURVEY CORNER CERTIFICATE OF  
Land Survey Monuments situated in Section 14, Township 90 N,  
Range 11 W, of the Fifth Principal Meridian, BLACK HAWK County, Iowa.  
Previously recorded in Misc. Book 309, Page 787, in County Recorder's Office.

(Show reason for preparing this certificate): The corner monument has been Replaced or Modified, per Ia. Code 355.11(1)(c)

(Evidence and detailed procedures used in establishing the corner position(s) and monumentation found or placed.)

Monument Description and Remarks: N.E. COR.  
CORNER RESET & TIES UPDATED PER PAVEMENT WIDENING AND H.M.A. RESURF. PROJECT  
LFM-1601--7X-07. PRIOR TO RESURF. PROJECT, FOUND 1/2" CONE-HEAD HINGE NAIL IN  
5/8"Ø LEAD PLUG FLUSH WITH CONCRETE SURFACE PER CURRENT RECORD AND TEMP. REF.  
COR. LOCATION PER RTK GPS. AFTER 6" P.C.C. CRACK & SEAT, NO EXCAVATION @ REF.  
COR. LOCATION. PVMT. RESURFACED w/ +5" (3.5" BASE & 1.5" SURF.) H.M.A. PAVING.  
AFTER H.M.A. RESURFACE, RESET CORNER WITH 6"L. MAG SPIKE w/ MTL. WASHER (PLS  
#15748) LOCATED @ ±1.45' N. OF H.M.A. JOINT, w/ H.C. DATA REF. AND ALIGNED w/ ±C.L.  
S.R. INTERSECTION TO NORTH.

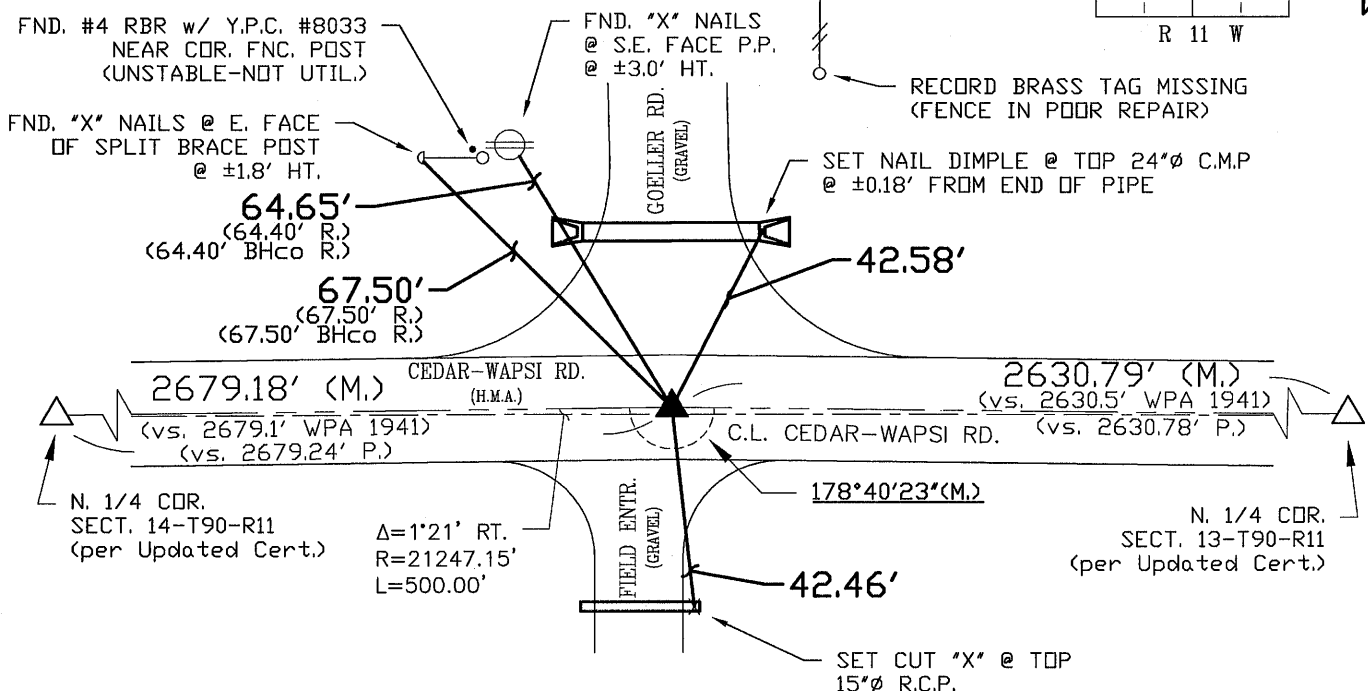
## PLAN VIEW

"NOT TO SCALE"

BHco Hist. Ties: BK. #1003 p.14 T90-R11  
FIELD BOOK: Ties per Topcon 7003i #Z0115

(Show a minimum of three reference ties to durable physical objects, relevant monuments and physical conditions that will enable recovery of the corner.)

- 1.) TIES PER EDM MEASURE  
IN EITHER PRISM "OR"  
NON-PRISM MODE, WHILE  
UTILIZING "INDIRECT"  
MEASURE, WITH ALL  
DISTANCES PLUMB/HORIZ.  
(HD), UNLESS DENOTED.
- 2.) SECTION LINE MEASURE  
REFERS TO "LOCAL GROUND"  
DIST. AND INCLUDES ELLIPSOIDAL  
(COMBINED) SCALE FACTOR FROM  
S.P.C. GRID INVERSE (AS  
OBSERVED, PER AVG. SCALE  
FACTOR = 1.000097098292)

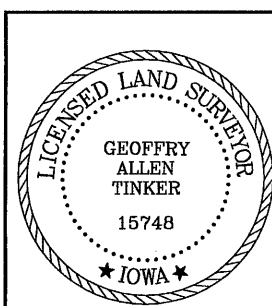


### S.P.C., Ia. N. Zone, USft

N = 3689609.17  
E = 5297750.09  
CONVERGENCE = 0° 56' 53"  
(NAD83-NA2011 IA. RTN OBS.)

FIELD SURVEY: S.S. & G.T. 08/28/13  
PREPARED BY: S.S. & G.T. 11/19/13

## CERTIFICATION



I hereby certify that this land surveying document was prepared and the related survey work was performed by me or under my direct personal supervision and that I am a duly licensed Land Surveyor under the laws of the State of Iowa.

*Geoffrey Allen Tinker* 01/22/2014  
Geoffrey Allen Tinker (date)  
License Number 15748  
My license renewal date is December 31, 2014  
Pages or sheets covered by this seal:  
This Land Corner Certificate Only.

## LIST CORNERS TO BE INDEXED

Corner	Section	Township	Range
N.E. Cor.	14	90 N	11 W
N.W. Cor.	13	90 N	11 W
S.E. Cor.	11	90 N	11 W
S.W. Cor.	12	90 N	11 W

## INDEX OF ABBREVIATIONS

(M) = "Measured" Dimension  
(P) = "Platted" Dimension  
(R) = "Record" Dimension  
(C) = "Calculated" Dimension  
(G) = Iowa Geodetic Survey  
(WPA) = Works Progress Admin. Survey  
(G) = per George Miller Survey (BHco Surveyor 1858-1880)  
(B) = per John Ball Survey (BHco Surveyor 1866-1891)  
(N) = per Nathan Barber Survey (BHco Surveyor 1908-1931)  
(NP) = Reflectorless EDM Meas.  
(MLM) = Indirect Measure  
(CM) = Concrete Monument  
(SM) = Survey Marker Spike/Tag  
(PK) = PK/MAG Nail Brand Style