

File **2014-00014140**

PH.# (319) 833-3008
FAX.# (319) 833-3139

SLSI 9-94
BHCO 03-09

Land Survey Monuments situated in Section 13 , Township 90 N ,
Range 11 W , of the Fifth Principal Meridian, BLACK HAWK County, Iowa.
Previously recorded in Fee Book N/A Page N/A in County Recorder's Office.

(Show reason for preparing this certificate): The corner monument has been Replaced or Modified, per Ia. Code 355.11(1)(c)

(Evidence and detailed procedures used in establishing the corner position(s) and monumentation found or placed.)

Monument Description and Remarks: N.E. COR.

CORNER RESET & TIES UPDATED PER PAVEMENT WIDENING AND H.M.A. RESURF. PROJECT LFM-1601--7X-07. PRIOR TO RESURF. PROJECT, FOUND RAMSET NAIL IN P.C.C. PAVEMENT PER CURRENT RECORD AND TEMP. REF. COR. LOCATION PER RTK GPS. AFTER 6" P.C.C. CRACK & SEAT, NO EXCAVATION @ REF. COR. LOCATION. PVMT. RESURFACED w/ +5" (3.5" BASE & 1.5" SURF.) H.M.A. PAVING. AFTER H.M.A. RESURFACE, RESET CORNER WITH 6"L. MAG SPIKE w/ MTL. WASHER (PLS #15748) LOCATED @ ±0.30' NORTH OF H.M.A. JOINT AND ALIGNED (±) WITH C.L. OF BLACK HAWK-BUCHANAN ROAD TO NORTH AND SOUTH.

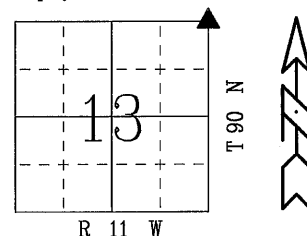
BHco Hist. Ties: BK. #1003 p.13 T90-R11

"NOT TO SCALE"

FIELD BOOK: Ties per Topcon 7003i #Z0115

(Show a minimum of three reference ties to durable physical objects, relevant monuments and physical conditions that will enable recovery of the corner.)

- 1.) TIES PER EDM MEASURE IN EITHER PRISM "DR" NON-PRISM MODE, WHILE UTILIZING "INDIRECT" MEASURE, WITH ALL DISTANCES PLUMB/HORIZ. (HD), UNLESS DENOTED.
- 2.) SECTION LINE MEASURE REFERS TO "LOCAL GROUND" DIST. AND INCLUDES ELLIPSIDAL (COMBINED) SCALE FACTOR FROM S.P.C. GRID INVERSE (AS OBSERVED, PER AVG. SCALE FACTOR = 1.000097098292)



N. 1/4 COR.
SECT. 13-T90-R11
(per Updated Cert.)

CEDAR-WAPSI RD. 2616.29' (M.) —
(H.M.A.) — (vs. 2615.6' WPA 1941)
(vs. 2616.32' P.)

120th St. (BUCHANAN COUNTY)
(H.M.A.)

74.10'
(74.35' R.)
(74.23' BHco. R.)

-64.28'
(62.94' R.)

65.11'
(65.17' R.)
(64.33' BHCo. R.)

FND, YELLOW PLASTIC DISK
MARKED "SURVEY MARKER"
@ N.N.W, FACE P.P. @ $\pm 4.7'$ HT.

ELECTRIC TRANSFORMER

S.P.C., Ia. N. Zone, USft

$$N = 3689586.61$$
$$F = 5302996.49$$

CONVERGENCE = $0^{\circ} 57' 40''$

(NAD83-NA2011 1A. RTN OBS.)

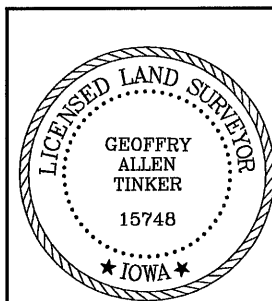
FND. "X" NAILS @ N.N.E FACE
COR. FNC. POST @ $\pm 2.3'$ HT.
POST LEANING TO SOUTH

FND. "X" NAILS @
N. FACE BRACE POST
@ $\pm 2.1'$ HT.

FIELD SURVEY: S.S. & G.T. 08/28/13

PREPARED BY: S.S. & G.T. 11/19/13

LIST CORNERS TO BE INDEXED



I hereby certify that this land surveying document was prepared and the related survey work was performed by me or under my direct personal supervision and that I am a duly licensed Land Surveyor under the laws of the State of Iowa

Geoffrey Allen Tinker 01/22/2014
Geoffrey Allen Tinker (date)

License Number 15748

My license renewal date is December 31, 2014

Pages or sheets covered by this seal:

This Land Corner Certificate Only.

<u>Corner</u>	<u>Section</u> -	<u>Township</u> -	<u>Range</u>
N.E. Cor.	13	90 N	11 W
N.W. Cor.	18	90 N	10 W
S.E. Cor.	12	90 N	11 W
S.W. Cor.	7	90 N	10 W

INDEX OF ABBREVIATIONS

(M) = "Measured" Dimension	"NP" = Reflectorless EDM Meas.
(P) = "Platted" Dimension	"MLM" = Indirect Measure
(R) = "Record" Dimension	"CM" = Concrete Monument
(C) = "Calculated" Dimension	"SM" = Survey Marker Spike/Tag
"GS" = Iowa Geodetic Survey	"PK" = PK/MAG Nail Brand Style
"WPA" = Works Progress Admin. Survey	
"Φ" = per George Miller Survey (BHCo Surveyor 1858-1860)	
"S" = per John Ball Survey (BHCo Surveyor 1868-1891)	
"N" = per Nathan Barber Survey (BHCo Surveyor 1908-1931)	