

NOTE:CORNER NOT FILED  
w/ L.S. CO.

Buchanan Co. Ref.

DANIEL T. CRAWFORD, P.E. &amp; L.S. Crawford Engineering &amp; Surveying, Inc., Independence, Iowa 319/334-7077

## UNITED STATES PUBLIC LAND SURVEY CORNER CERTIFICATE

OF

Land Survey Monuments situated in Section 18, Township 90 N, Range 10 W, of the Fifth Principal Meridian, Buchanan County, Iowa.Previously recorded in N/A in County Recorder's Office.

## Monument Description and Remarks:

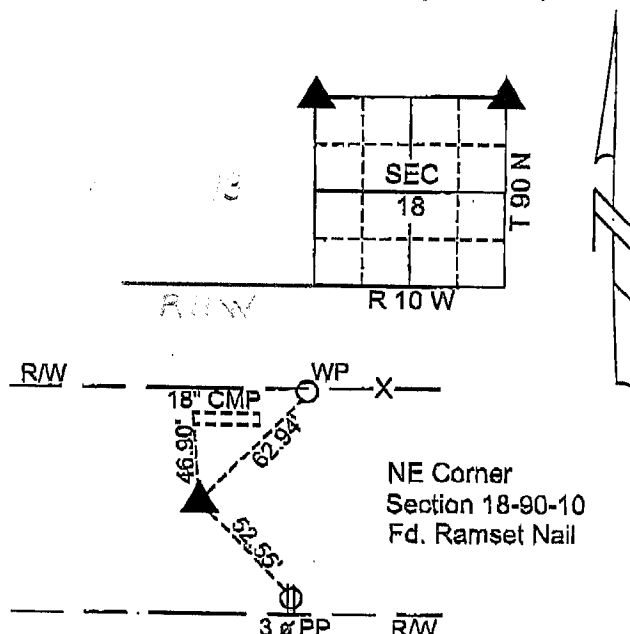
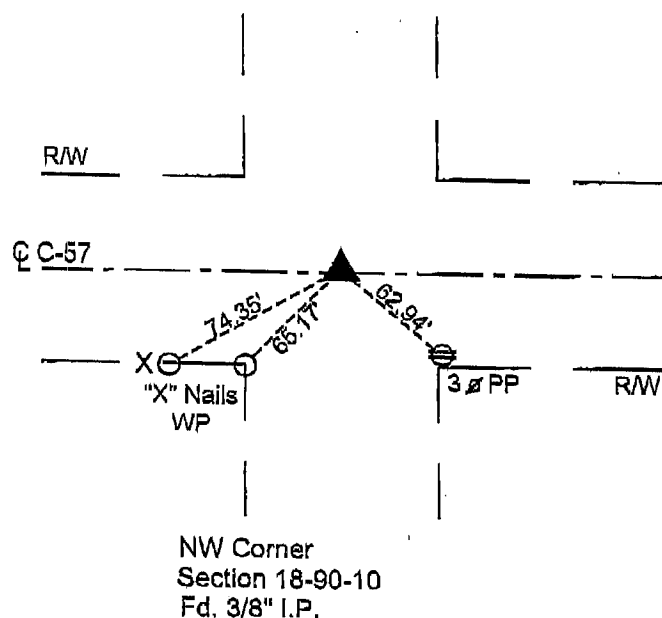
Reason for preparing certificate: Current certificate not on file.

Evidence and detailed procedure used to establish corner position:

NE Corner - Corner position recovered from County Highway Department references.NW Corner - Corner position recovered from County Highway Department references.Monumentation found or placed: NE Corner - Fd. ramset nail in PCC pavement.NW Corner - Fd. 3/8" I.P. in PCC pavement.

## PLAN-VIEW

(Show a minimum of three reference ties to durable physical objects, relevant monuments and physical conditions that will enable recovery of the corner).



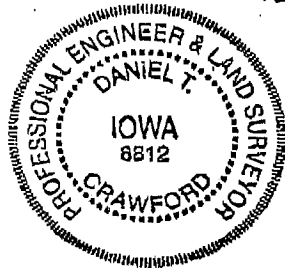
I hereby certify that the survey work was completed and this land surveying document was prepared by me or under my direct personal supervision and that I am a duly licensed land surveyor under the laws of the State of Iowa.

Signature: Daniel T. Crawford  
DANIEL T. CRAWFORD, P.E. & L.S.

Date: 6-21-04 Reg. No. 8812

My license renewal date is December 31, 2005

SEAL



## List Corners to be Indexed

Corners	Section	Twp.	Range
NE Corner	18	90 N	10 W
NW Corner	18	90 N	10 W
NE COR.	18	90 N	11 W