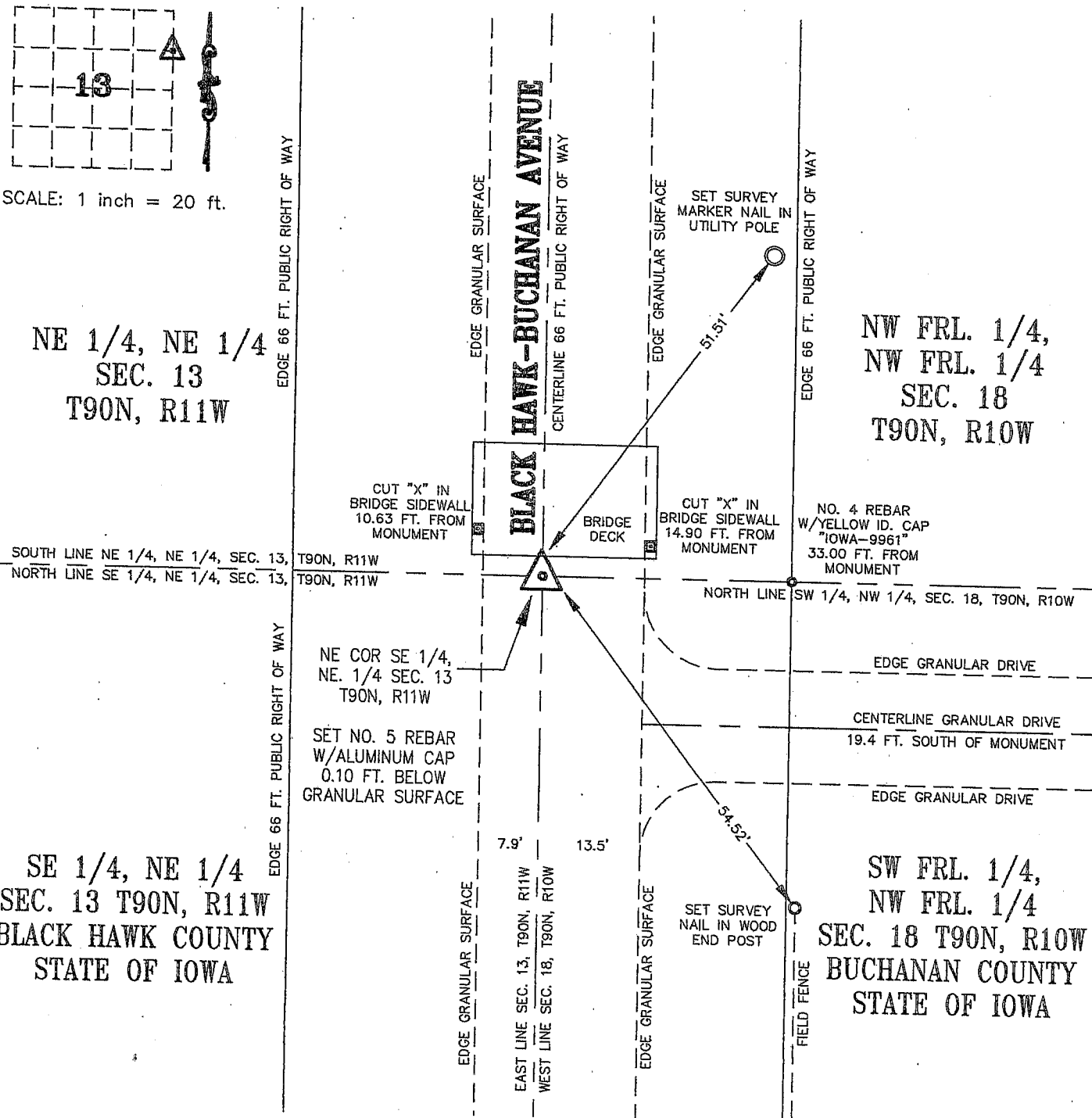


Kirk D. Eschliman, P.L.S. Iowa Lic. No. 9961, 723 Broadway Street, Waterloo, Iowa 50703 - Phone: 319-234-0509

UNITED STATES PUBLIC LAND SURVEY CORNER CERTIFICATE OF
LAND SURVEY MONUMENTS SITUATED IN SECTION 13, TOWNSHIP 90 NORTH, RANGE 11 WEST, OF THE FIFTH PRINCIPAL
MERIDIAN, BLACK HAWK COUNTY, IOWA. PREVIOUSLY NOT RECORDED.

(SHOW REASON FOR PREPARING THIS CERTIFICATE, THE EVIDENCE AND DETAILED PROCEDURES USED IN ESTABLISHING THE CORNER POSITIONS AND
MONUMENTATION FOUND OR PLACED.)

MONUMENT DESCRIPTION AND REMARKS: NO CURRENT SECTION CORNER CERTIFICATE ON FILE IN THE BLACK HAWK
COUNTY RECORDER'S OFFICE. SET NO. 5 REBAR WITH 2 INCH ALUMINUM CAP, 0.1 FEET BELOW GRANULAR
SURFACE. MONUMENT USED FOR SURVEY IN NW 1/4 OF SECTION 18, T90N, R10W.



I HEREBY CERTIFY THAT THIS LAND SURVEYING DOCUMENT
WAS PREPARED BY ME OR UNDER MY DIRECT PERSONAL
SUPERVISION AND THAT I AM A DULY LICENSED LAND
SURVEYOR UNDER THE LAWS OF THE STATE OF IOWA.

[Signature] DATE: 05/07/2007
KIRK D. ESCHLIMAN, P.L.S. IOWA LIC. NO. 9961
MY LICENSE RENEWAL DATE IS DECEMBER 31, 2007
PAGES OR SHEETS COVERED BY THIS SIGNATURE & SEAL: SHEET 1 OF 1



LIST OF CORNERS TO BE INDEXED:			
CORNER	SEC	TWP	RANGE
NE COR	13	90	11
SE 1/4, NE 1/4			

KESS & ASSOCIATES, INC.
723 BROADWAY, WATERLOO, IOWA 50703-5811 PHONE: (319) 234-0509

DATE OF FIELD WORK: APRIL 23, 2007
DWG. DATE: 05/07/2007 DRAWN BY: BJYK
CADD FILE: 07A19SCC2BH.DWG PROJECT NO.: 07A19