

SC
Misc
INDEX
MARGIN
PROOF
COMPARE

BLACK HAWK COUNTY IOWA: SS
Filed for record Jun 2, 19 97 at
4:00 P.M. and recorded in Book 325
of Misc Page 737
Recorder
Fee n/c
ENGINEER'S OFFICE

22427

PREPARED BY: BLACK HAWK COUNTY ENGINEERS OFFICE
316 E. FIFTH STREET, ROOM 211 WATERLOO, IOWA 50703
PH.# (319) 291-2419
FAX.# (319) 291-2461
SLSI 9-94
CERT 12-96

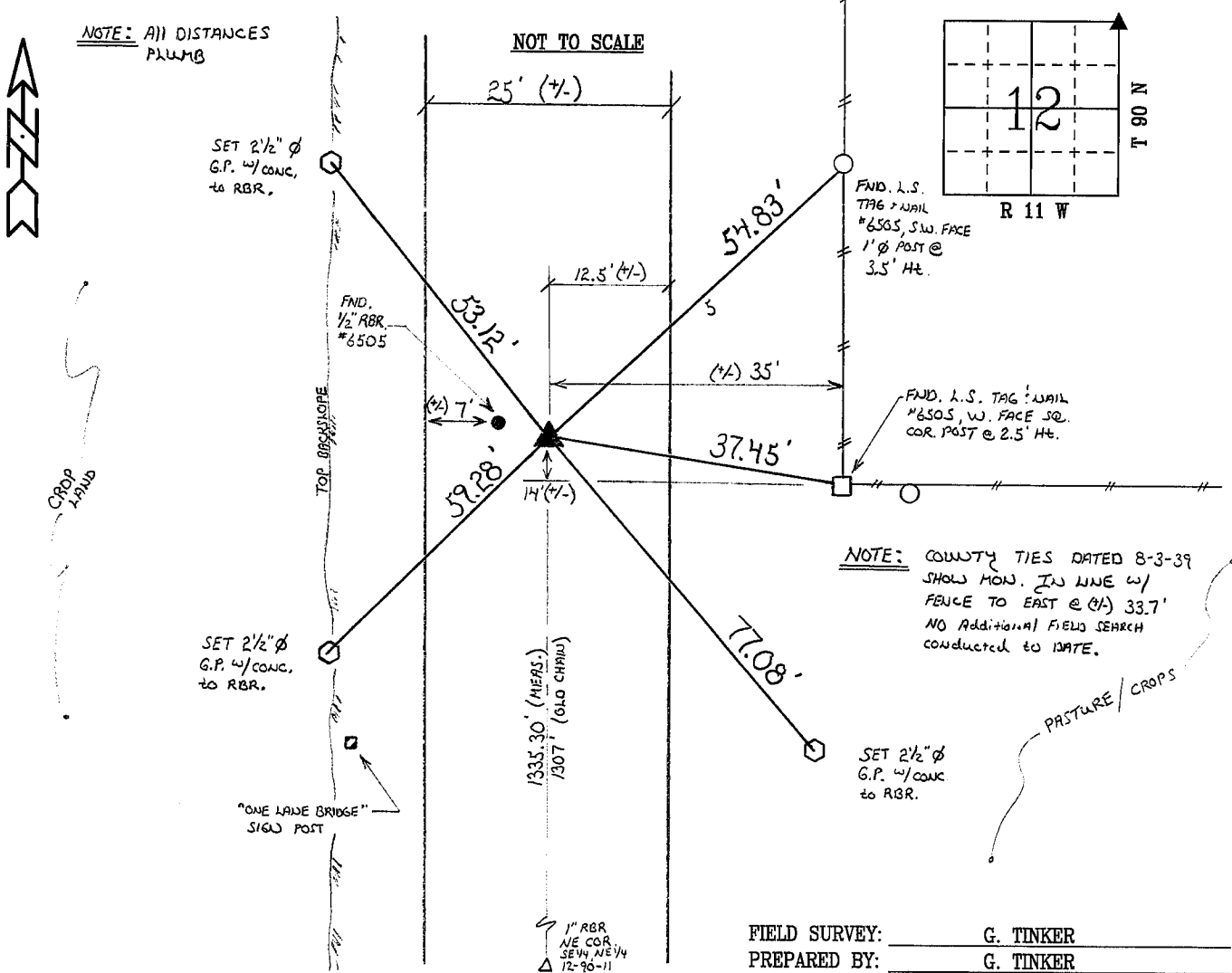
UNITED STATES PUBLIC LAND SURVEY CORNER CERTIFICATE OF
Land Survey Monuments situated in Section 12, Township 90 N,
Range 11 W, of the Fifth Principal Meridian, BLACK HAWK County, Iowa.
Previously recorded in Book N/A, Page N/A, in County Recorder's Office.

(Show reason for preparing this certificate, the evidence and detailed procedures used in establishing the corner positions and monumentation found or placed.)

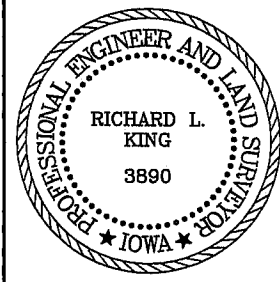
Monument Description and Remarks: FIELD RECOVERED 5'x5' BASE OF BROKEN
CONCRETE MONUMENT @ 3' DEEP. DRILLED PILOT INTO STABLE BASE OF OLD
C.M. AND SET 5/8" REBAR 32"L. @ 4' DEEP FROM ROAD SURFACE.
MONUMENT UTILIZED FOR SURVEY OF BRIDGE REPLACEMENT S. OF CORNER.
C.M. FOUND 5' E. AND 1.5' S. OF EXISTING FOUND 1/2" REBAR L.S. # 6505.
ORIG. EVIDENCE WHICH INITIATED FUTHER SEARCH WAS FND. OLD NAIL W/
CHEESE CLOTH @ +/- LOC. OF FND. C.M. WITH ALL ORIG. COUNTY TIES DESTROYED.

PLAN - VIEW

(Show a minimum of three reference ties to durable physical objects, relevant monuments and physical conditions that will enable recovery of the corner.)



CERTIFICATION



I hereby certify that this land surveying document was prepared and the related survey work was performed by me or under my direct personal supervision and that I am a duly licensed Land Surveyor under the laws of the State of Iowa.
Richard L. King 6/2/97 (date)
License Number 3890
My license renewal date is December 31, 1997
Pages or sheets covered by this seal:
This Land Corner Certificate Only.

LIST CORNERS TO BE INDEXED

Corner	Section	Township	Range
N.E. COR.	12	90 N	11 W