

SC Misc INDEX MARGIN PROOF COMPARE

BLACK HAWK COUNTY IOWA: SS
Filed for record Jun 2, 19 97 at 22428
4:00 P .M. and recorded in Book 325
of Misc Page 738
Patricia L. Liss Recorder
Fee n/c
ENGINEER'S OFFICE

PREPARED BY: BLACK HAWK COUNTY ENGINEERS OFFICE
316 E. FIFTH STREET, ROOM 211 WATERLOO, IOWA 50703
PH.# (319) 291-2419 SLSI 9-94
FAX.# (319) 291-2461 CERT 12-96

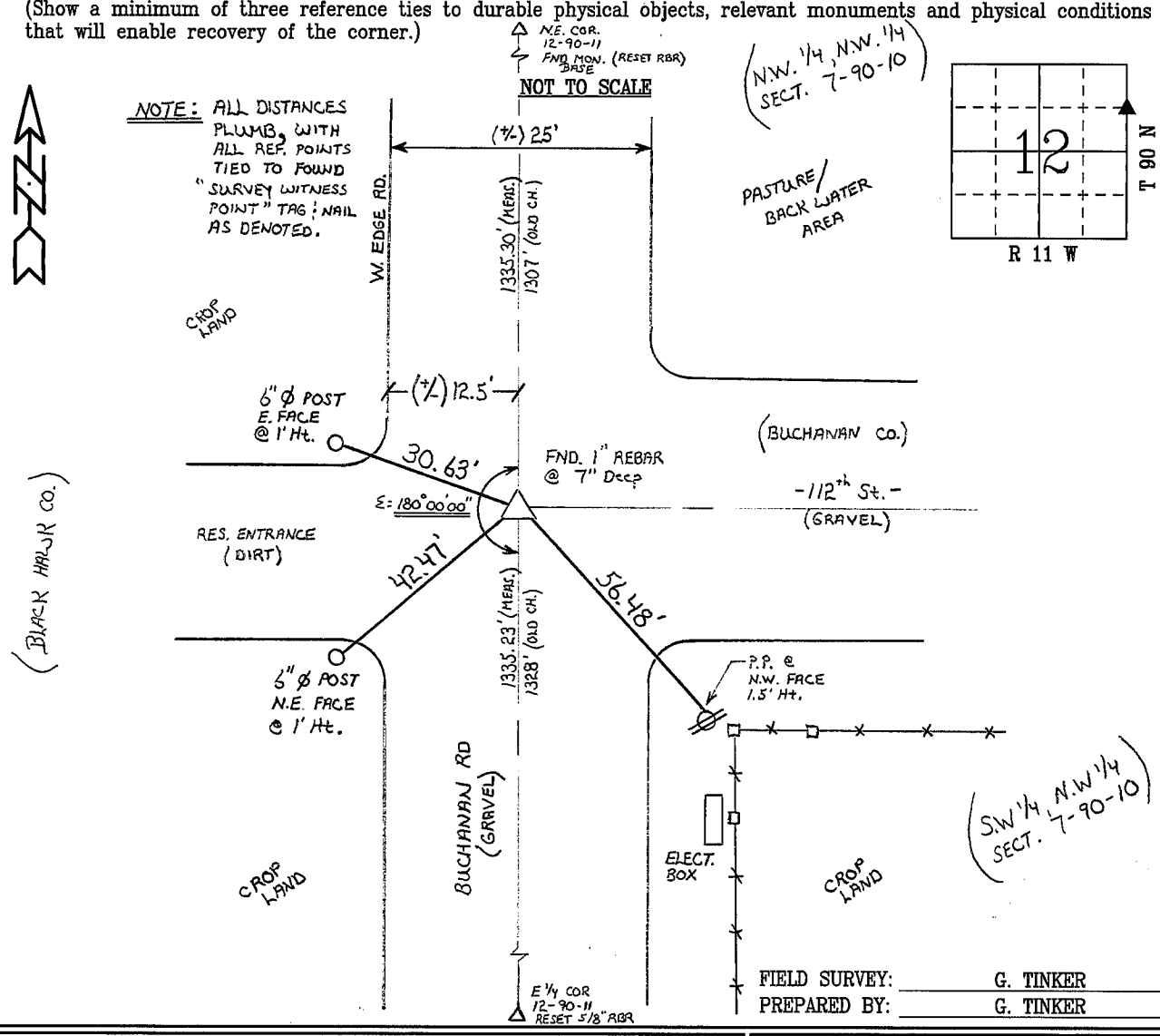
UNITED STATES PUBLIC LAND SURVEY CORNER CERTIFICATE OF
Land Survey Monuments situated in Section 12, Township 90 N,
Range 11 W, of the Fifth Principal Meridian, BLACK HAWK County, Iowa.
Previously recorded in Book N/A, Page N/A, in County Recorder's Office.

(Show reason for preparing this certificate, the evidence and detailed procedures used in establishing the corner positions and monumentation found or placed.)

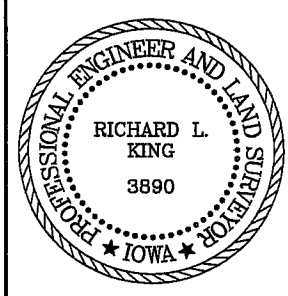
Monument Description and Remarks: FOUND 1" REBAR @ 7" DP. LOCATED IN
CENTER OF INTERSECTION, AS DENOTED. UTILIZED AND REFERENCED THREE
EXISTING REFERENCE TIES FROM BUCHANAN COUNTY ORIGIN.
MONUMENT UTILIZED FOR SURVEY OF BRIDGE REPLACEMENT N. OF CORNER.

PLAN - VIEW

(Show a minimum of three reference ties to durable physical objects, relevant monuments and physical conditions that will enable recovery of the corner.)



CERTIFICATION



I hereby certify that this land surveying document was prepared and the related survey work was performed by me or under my direct personal supervision and that I am a duly licensed Land Surveyor under the laws of the State of Iowa.
Richard L. King 6/2/97 (date)
License Number 3890
My license renewal date is December 31, 1997
Pages or sheets covered by this seal:
This Land Corner Certificate Only.

LIST CORNERS TO BE INDEXED

Corner	Section	Township	Range
N.E. COR.	12	90 N	11 W
SE 1/4,			
NE 1/4			

BOOK 325 PAGE 738