

Misc  
INDEX  
COF  
COF  
COF  
COF

BLACK HAWK COUNTY IOWA: SS  
Filed for record May 15, 19 97 at  
4:55 P.M. and recorded in Book 325  
Misc Page 340  
Recorder  
Fee N/C  
BH COUNTY ENGINEER

County Assessor

21289

PREPARED BY: BLACK HAWK COUNTY ENGINEERS OFFICE PH# (319) 291-2419 SLSI 9-84  
316 E. FIFTH STREET, ROOM 211 WATERLOO, IOWA 50703 FAX# (319) 291-2461 CERT 12-98

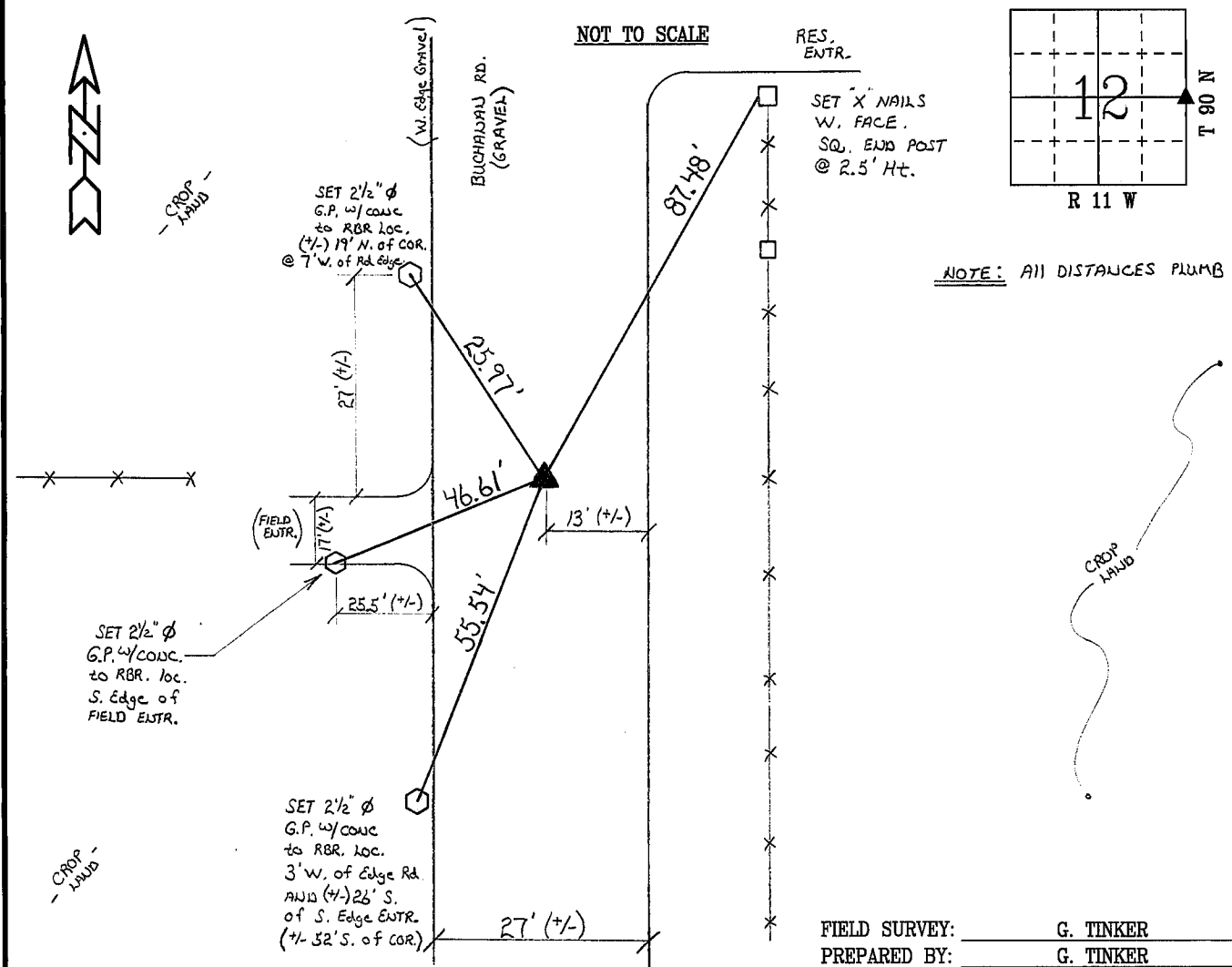
UNITED STATES PUBLIC LAND SURVEY CORNER CERTIFICATE OF  
Land Survey Monuments situated in Section 12, Township 90 N,  
Range 11 W, of the Fifth Principal Meridian, BLACK HAWK County, Iowa.  
Previously recorded in Book N/A, Page N/A, in County Recorder's Office.

(Show reason for preparing this certificate, the evidence and detailed procedures used in establishing the corner positions and monumentation found or placed.)

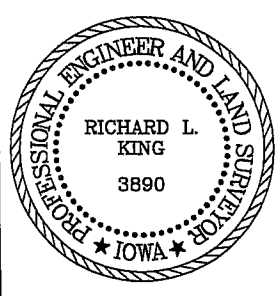
Monument Description and Remarks: FIELD RECOVERED 60d SPIKE AND TEMP.  
REF'ED TO PROBE FOR FOUND CONCRETE MONUMENT @ +/- 3.5' DEEP.  
RESET 5/8" REBAR OVER C.M. @ 5' DEEP FROM ROAD SURFACE.  
MONUMENT UTILIZED FOR SURVEY OF BRIDGE REPLACEMENT N. OF CORNER.

PLAN - VIEW

(Show a minimum of three reference ties to durable physical objects, relevant monuments and physical conditions that will enable recovery of the corner.)



CERTIFICATION



I hereby certify that this land surveying document was prepared and the related survey work was performed by me or under my direct personal supervision and that I am a duly licensed Land Surveyor under the laws of the State of Iowa.  
Richard L. King 5/15/97 (date)  
License Number 3890  
My license renewal date is December 31, 1997  
Pages or sheets covered by this seal:  
This Land Corner Certificate Only.

LIST CORNERS TO BE INDEXED

Corner	Section	Township	Range
E. 1/4	12	90 N	11 W