

File **2018-00011236**

United States Public Land Survey Corner Certificate

Land Survey Monument situated in

Section **11**, Township **90** North, Range **11** West of the Fifth Principal Meridian, **Black Hawk** County, Iowa.
On file in **Book 326, Page 164** in the County Recorder's office.

This certificate is being prepared in compliance with Iowa Code Chapter 355.11 because:

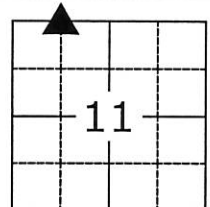
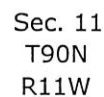
- ☐ There is no certificate on file for this corner.
 - ☒ There are no longer three valid ties of record.
 - ☐ There are changes to reference ties of record.
 - ☐ There is change of monumentation of record.
 - ☐ To clarify description of record monument (ties).

Monument Description and Remarks:

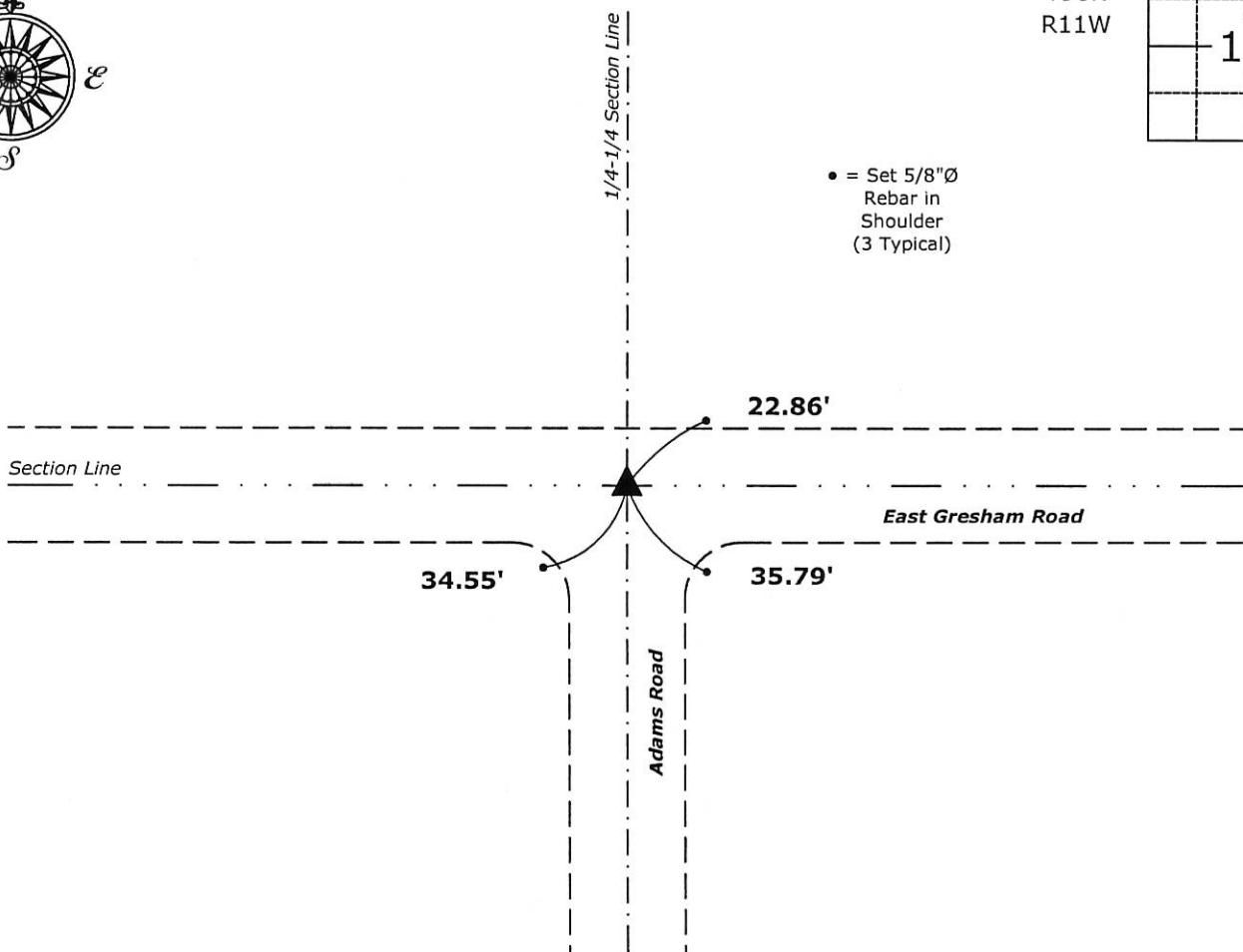
Northwest Corner NE 1/4 - NW 1/4: Found 1/2"Ø Rebar w/2"Ø Aluminum Cap PLS 10793 with information obtained from the previously recorded Section Corner Certificate.

Plan View

(Show a minimum of three reference ties to durable physical objects, relevant monuments and physical conditions that will enable recovery of the corner.)



- = Set 5/8"Ø Rebar in Shoulder (3 Typical)



Northwest Corner NE 1/4 - NW 1/4 of Section 11-90-11
Found 1/2"Ø Rebar w/2"Ø Aluminum Cap PLS 10793



I hereby certify that this land surveying document was prepared and the related survey work was performed by me or under my direct personal supervision and that I am a duly licensed Land Surveyor under the laws of the State of Iowa.

Isaiah M. Reicks 11-14-17

License number 22468
My license renewal date is December 31, 2017.
Sheets covered by this seal: Individual sheet only

List Corner to be Indexed

Corner	Section	Twp.	Range
NW-NE-NW	11	90	11

Project Number: 2017-535

FB: Black Hawk 10, Pgs. 23-25

File: I:_C3D Projects - Waverly\County Control Systems\BLACK HAWK\BHCO-5.dwg, 11/14/2017 10:29:59 AM