

326-164

PLS, INC. at  
and recorded in Book 326  
Page 164

1-5.00/

UNITED STATES PUBLIC LAND SURVEY CORNER CERTIFICATE  
OF

Survey Monuments situated in Section 11, Township 90 N, Range 11 W,  
Black Hawk County, Iowa. Previously recorded  
in County Recorder's Office.

(book, page, document number, etc.)  
(Show reason for preparing this certificate, the evidence and detailed procedures used in establishing the corner positions and  
monumentation found or placed.)

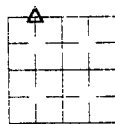
Monument Description and Remarks:

A	SET 1/2 REBAR w/CAP #10793 AT MID. POINT OF LINE
B	PLASTIC WASHER, NAIL TO POWER POLE
C	CENTER OF STREET SIGN POST
D	PLASTIC WASHER, NAILED TO SIGN POST

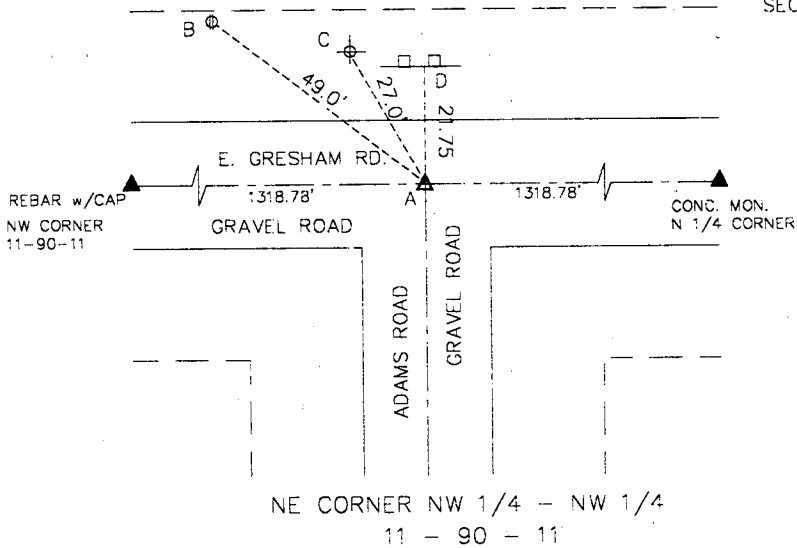
PLAN VIEW

(Show a minimum of three reference ties to durable physical objects, relevant monuments and physical conditions that will  
enable recovery of the corner.)

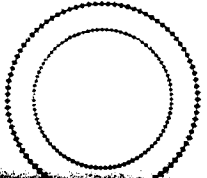
NOTE: SEE SURVEY FOR  
TODD NEIL FOR  
MORE SECTION INFORMATION.



SECTION 11



I hereby certify that this land surveying document was prepared and  
the related survey work was performed by me or under my direct  
personal supervision and that I am a duly licensed Land Surveyor  
under the laws of the State of Iowa.  
*Terry D. Van Laningham June 25, 1997*  
Terry D. Van Laningham, PLS Date:  
License number 10793  
My registration renewal date is December 31, 1997.  
Pages or sheets covered by this seal:  
THIS DOCUMENT ONLY



SEAL

List Corners to be indexed			
Corners	Section	Township	Range
NE COR. NW 1/4 - NW 1/4	11	90 N	11 W

TERRY D. VAN LANINGHAM. PLS. INC.  
(319) 352 - 2132