

11-90-11 W

COUNTY IOWA: SS
Recorded July 1, 1997 at
and recorded in Book 326
Misc Page 163

1-5.00/ Recorder

PREPARED BY TERRY D. VAN LANINGHAM, PLS, INC. • 120 2ND STREET, SW., WAVERLY, IOWA • (319)352-0801

UNITED STATES PUBLIC LAND SURVEY CORNER CERTIFICATE

OF

Survey Monuments situated in Section 11, Township 90 N., Range 11 W.,
Principal Meridian, BLACK HAWK County, Iowa. Previously recorded
in County Recorder's Office.

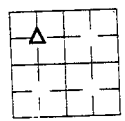
(book, page, document number, etc.)
Reason for preparing this certificate, the evidence and detailed procedures used in establishing the corner positions and
documentation found or placed)

- Monument Description and Remarks:
- SET IRON PIN & CAPPED
 - STEEL FENCE CORNER POST
 - PLASTIC WASHER, NAILED TO POWER POLE
 - CENTER TELEPHONE DROP BOX

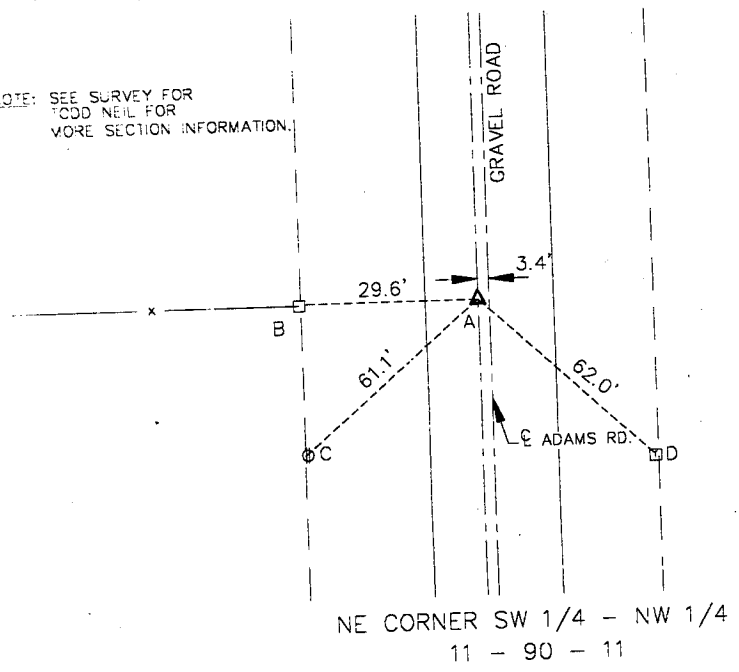
PLAN VIEW

Show a minimum of three reference ties to durable physical objects, relevant monuments and physical conditions that will
enable recovery of the corner.)

NOTE: SEE SURVEY FOR
TODD NEIL FOR
MORE SECTION INFORMATION.



SECTION 11



I hereby certify that this land surveying document was prepared and
the related survey work was performed by me or under my direct
supervision and that I am a duly licensed Land Surveyor
under the laws of the State of Iowa.
Terry D. Van Laningham June 23, 1997
Terry D. Van Laningham, PLS Date:
License number 10793
My registration renewal date is December 31, 1997.
The sheets covered by this seal:
DOCUMENT ONLY

List: Corners to be Indexed			
Corners	Section	Township	Range
NE COR. SW 1/4 - NW 1/4	11	90 N	11 W

MISC BR. 326 p. 163