

Prepared by & Return to: Herold - Reicks Surveying, 2206 East Bremer Avenue, Waverly, IA 50677, Ph. 319-483-5187

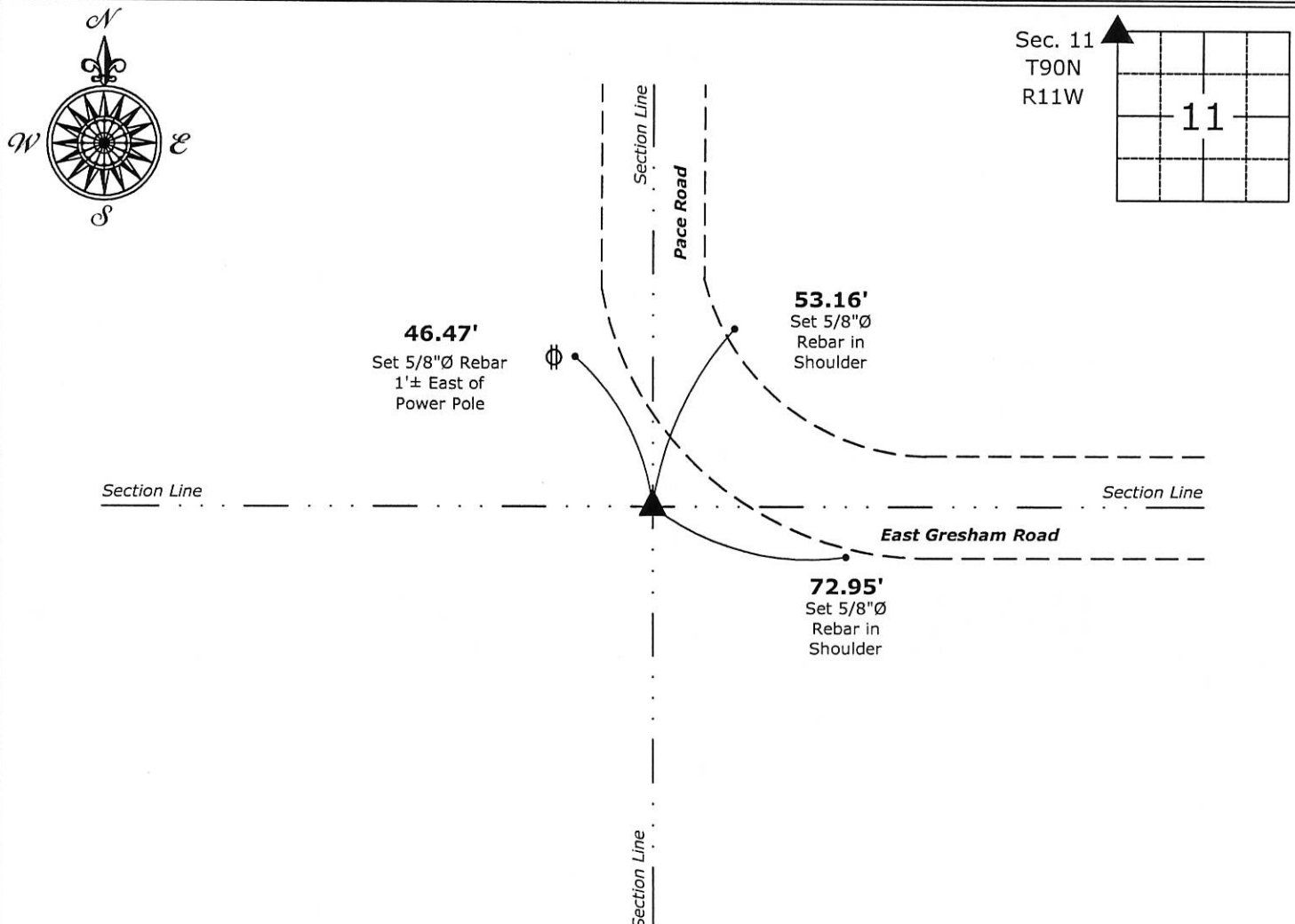
Land Survey Monument situated in
Section **11**, Township **90** North, Range **11** West of the Fifth Principal Meridian, **Black Hawk** County, Iowa.
On file in **Book 309, Page 779** in the County Recorder's office.

 $\{$

- ☐ There is no certificate on file for this corner.
☒ There are no longer three valid ties of record.
☐ There are changes to reference ties of record.
☐ There is change of monumentation of record.
☐ To clarify description of record monument (ties).

Northwest Corner: Found 1/2"Ø Rebar w/YPC PLS 8033 with information obtained from the previously recorded Section Corner Certificate.

(Show a minimum of three reference ties to durable physical objects, relevant monuments and physical conditions that will enable recovery of the corner.)



Northwest Corner of Section 11-90-11
Found 1/2"Ø Rebar w/YPC PLS 8033



My license renewal date is December 31, 2017.
Sheets covered by this seal: Individual sheet only

List Corner to be Indexed			
Corner	Section	Twp.	Range
NW	11	90	11

Project Number: 2017-535

FB: Black Hawk 10, Pgs. 23-25