

Prepared by & Return to: Herold - Reicks Surveying, 2206 East Bremer Avenue, Waverly, IA 50677, Ph. 319-483-5187

United States Public Land Survey Corner Certificate

Land Survey Monument situated in
Section **11**, Township **90** North, Range **11** West of the Fifth Principal Meridian, **Black Hawk** County, Iowa.
Not On file in the County Recorder's office.

This certificate is being prepared in compliance
with Iowa Code Chapter 355.11 because:



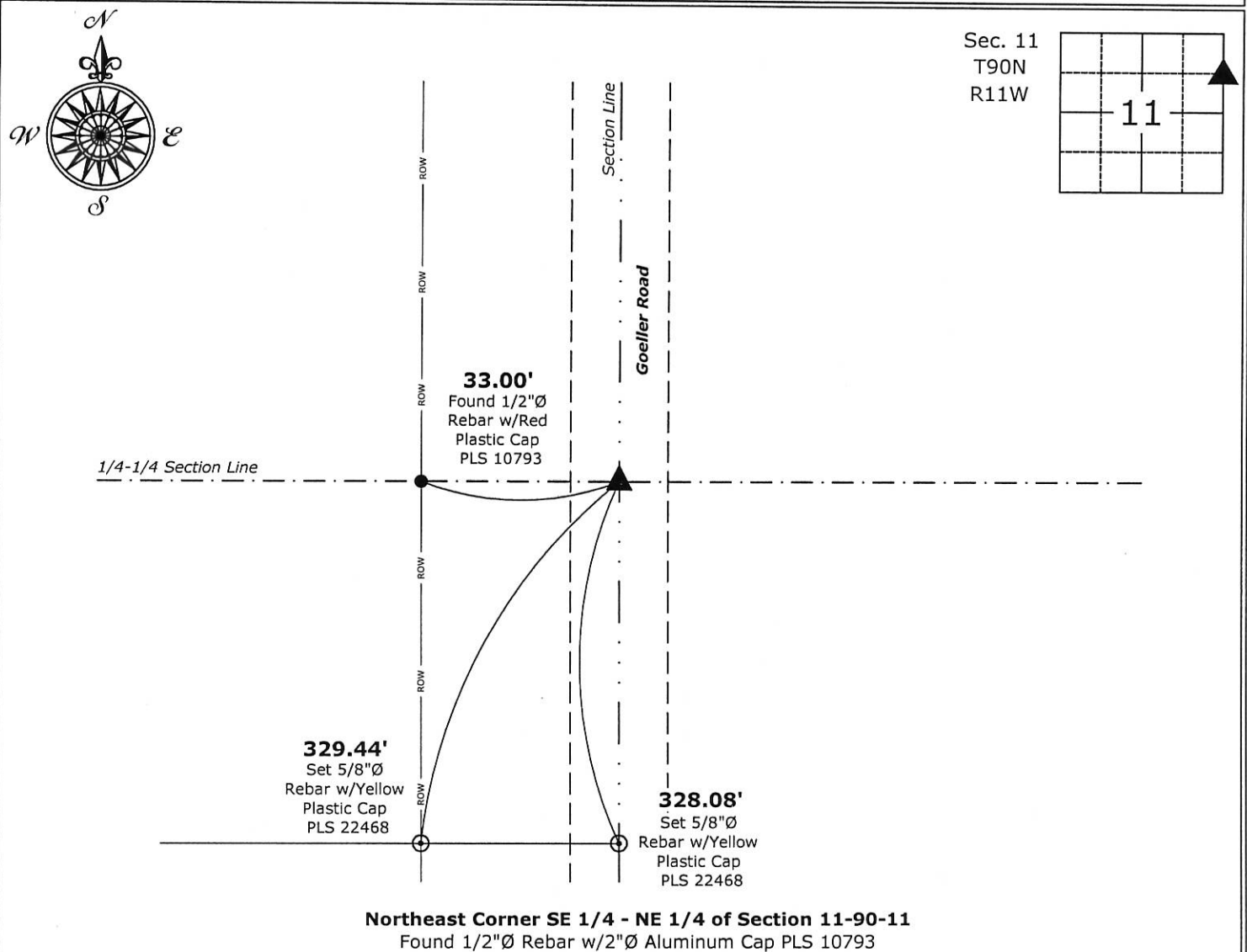
- ☐ There is no certificate on file for this corner.
- ☒ There are no longer three valid ties of record.
- ☐ There are changes to reference ties of record.
- ☐ There is change of monumentation of record.
- ☐ To clarify description of record monument (ties).

Monument Description and Remarks:

Northeast Corner SE 1/4 - NE 1/4: Found 1/2"Ø Rebar w/2"Ø Aluminum Cap PLS 10793 equidistant and on line between the Northeast and East 1/4 Corners of said Section.

Plan View

(Show a minimum of three reference ties to durable physical objects, relevant monuments and physical conditions that will enable recovery of the corner.)



I hereby certify that this land surveying document
was prepared and the related survey work was
performed by me or under my direct personal
supervision and that I am a duly licensed Land
Surveyor under the laws of the State of Iowa.

Isaiah M. Reicks 11-14-17
Isaiah M. Reicks Date:

License number 22468

My license renewal date is December 31, 2017.
Sheets covered by this seal: Individual sheet only

List Corner to be Indexed

Corner	Section	Twp.	Range
NE-SE-NE	11	90	11

Project Number: 2017-535

FB: Black Hawk 10, Pgs. 23-25