

SC
MISC
INDEX
MARGIN
PROOF
COMPARE

BLACK HAWK COUNTY IOWA:ss
Filed for record SEP 12, 2001 at
4:00 P. M. and recorded in Book 343
of MISC at page 988.

006799

Paul H. Helland
FEE 1-5.00X
PAUL HELLAND Recorder

Paul H. Helland, 1107 Technology Parkway, Cedar Falls, Iowa 50613-6951, (319)-266-0161

UNITED STATES PUBLIC LAND SURVEY CORNER CERTIFICATE OF

LAND SURVEY MONUMENTS SITUATED IN SECTION NO. 11, TOWNSHIP NO. 90 NORTH, RANGE
NO. 11 WEST OF THE FIFTH PRINCIPAL MERIDIAN, BLACK HAWK COUNTY, IOWA.
PREVIOUSLY RECORDED IN BOOK _____, PAGE _____.

(SHOW REASON FOR PREPARING THIS CERTIFICATE, THE EVIDENCE AND DETAILED PROCEDURES USED IN ESTABLISHING THE
CORNER POSITIONS AND MONUMENTATION FOUND OR PLACED.)

MONUMENT DESCRIPTION AND REMARKS:

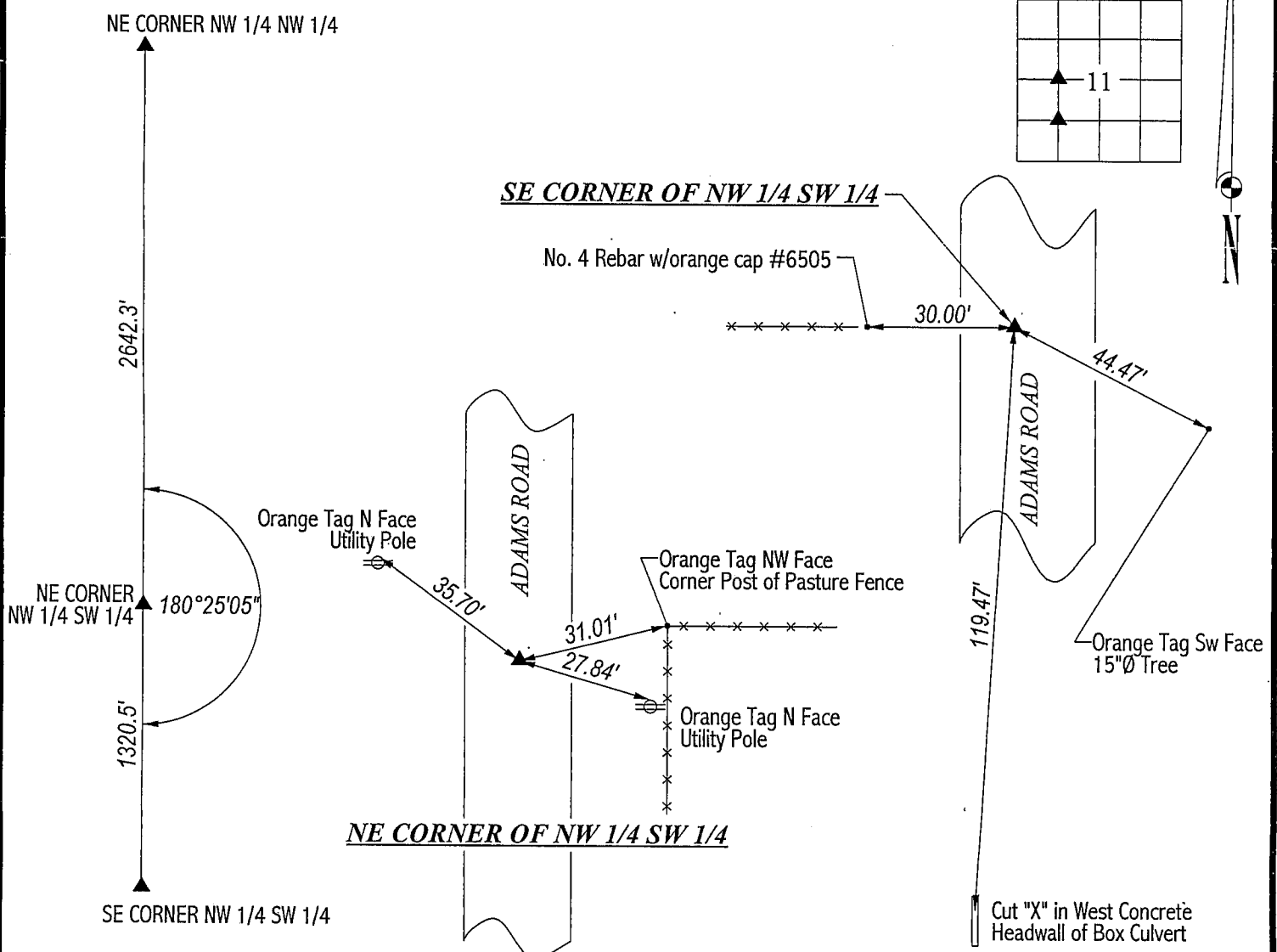
SURVEY DONE IN NW 1/4 SW 1/4 OF SEC. 11-T90N-R11W.

NE CORNER NW 1/4 SW 1/4: No record of previous establishment. Road calender File No. 293 calls for Adams Road to run along
80 rod line of NW 1/4. Plat of Survey 325 Misc. 162 calls for corner to be @ split of calculated W 1/4 Corner & Center, this position
is 10' +/- West of the centerline of road. Set No. 4 rebar w/orange cap #6505 on line between said calculated W 1/4 Corner &
Center and in line with NE Corner of NW 1/4 NW 1/4 (326 Misc. 164) & centerline of box culvert 270' +/- North of corner.

SE CORNER NW 1/4 SW 1/4: No record of previous establishment. Set No. 4 rebar w/orange cap #6505 on line between above
corner & the SE Corner of SW 1/4 SW 1/4 and in line with fence running West.

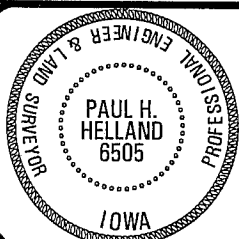
PLAN VIEW

(SHOW A MINIMUM OF THREE REFERENCE TIES TO DURABLE PHYSICAL OBJECTS, RELEVANT MONUMENTS AND PHYSICAL
CONDITIONS THAT WILL ENABLE RECOVERY OF THE CORNER.)



HES **HELLAND ENGINEERING & SURVEYING, LTD.**
1107 Technology Parkway
Cedar Falls, Iowa 50613-6951
(319)-266-0161

FILE NAME: 01-249CC.DRG



I hereby certify that this land surveying document was prepared
and the related survey work was performed by me or under my
direct personal supervision and that I am a duly licensed Land
Surveyor under the laws of the State of Iowa.

Paul H. Helland 9/12/01
Paul H. Helland
License Number 6505
My license renewal date is December 31, 2001.
All pages or sheets are covered by this seal except:

LIST CORNERS TO BE INDEXED			
CORNER	SECTION	TOWNSHIP	RANGE
NE CORNER SW 1/4 NW 1/4	11	90N	11W
SE CORNER SW 1/4 NW 1/4	11	90N	11W