

* Prepared by & Return to: Herold - Reicks Surveying, 2206 East Bremer Avenue, Waverly, IA 50677, Ph. 319-483-5187

United States Public Land Survey Corner Certificate

Land Survey Monument situated in
Section 11, Township 90 North, Range 11 West of the Fifth Principal Meridian, Black Hawk County, Iowa.
Not on file in the County Recorder's office.

This certificate is being prepared in compliance with Iowa Code Chapter 355.11 because:

☒ There is no certificate on file for this corner.

☐ There are no longer three valid ties of record.

☐ There are changes to reference ties of record.

☐ There is change of monumentation of record.

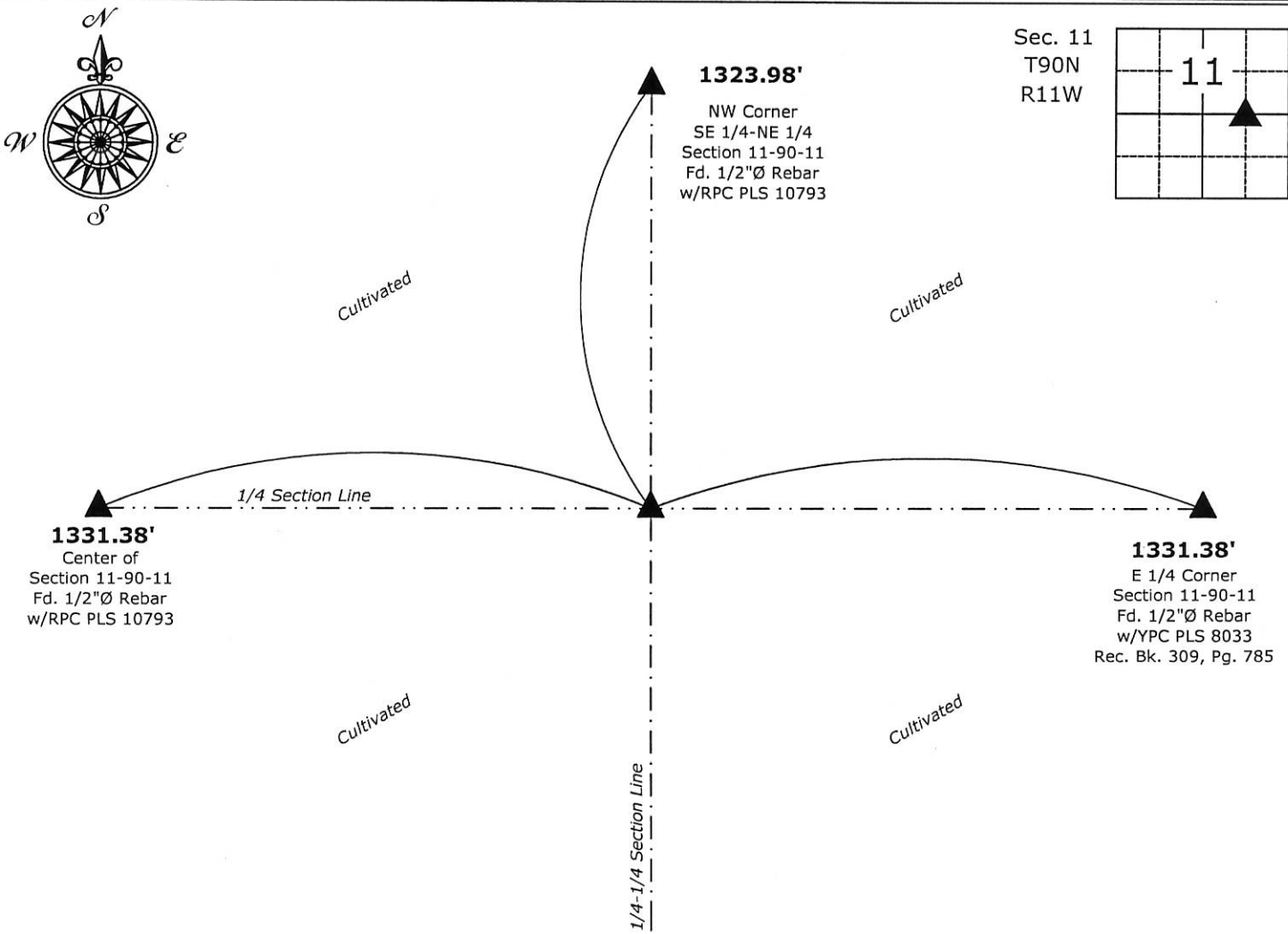
☐ To clarify description of record monument (ties).

Monument Description and Remarks:

Southwest Corner SE 1/4 - NE 1/4: Found 1/2"Ø Rebar equidistant and on line between the Center and East 1/4 Corners of said Section.

Plan View

(Show a minimum of three reference ties to durable physical objects, relevant monuments and physical conditions that will enable recovery of the corner.)



Southwest Corner SE 1/4 - NE 1/4 of Section 11-90-11
Found 1/2"Ø Rebar



I hereby certify that this land surveying document was prepared and the related survey work was performed by me or under my direct personal supervision and that I am a duly licensed Land Surveyor under the laws of the State of Iowa.

Isaiah M. Reicks 11-14-17
Isaiah M. Reicks Date:
License number 22468
My license renewal date is December 31, 2017.
Sheets covered by this seal: Individual sheet only

List Corner to be Indexed			
Corner	Section	Twp.	Range
SW-SE-NE	11	90	11
Project Number: 2017-535			
FB: Black Hawk 10, Pgs. 23-25			