

INDEX *sf* BLACK HAWK COUNTY, IOWA:ss

FEE BOOK # 2004 21638

PROOF *sf* FILED FOR RECORD JAN 14, 2004, AT 11:00 A.M. FEE 1-5.00-5.00/

COMPARED

Patricia L. Lee

BLACK HAWK COUNTY RECORDER

EN CLAPSADDLE GARBER ASSOCIATES 16 EAST MAIN PO BOX 754 MARSHALLTOWN IA 50158 0754

PREPARED BY - CLAPSADDLE-GARBER ASSOCIATES, INC, 16 EAST MAIN STREET, P.O. BOX 754, MARSHALLTOWN, IOWA 50158 - PHONE 641-752-6701

UNITED STATES PUBLIC LAND SURVEY CORNER CERTIFICATE

OF

Land Survey Monuments situated in Section 9, Township 90N, Range 11W, of the Fifth Principal Meridian, BLACK HAWK County, Iowa.
Previously recorded in Book _____, Page _____

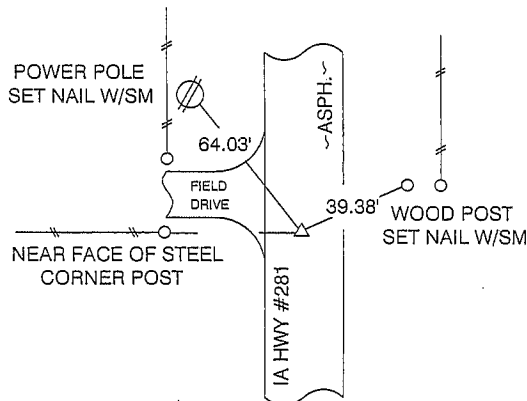
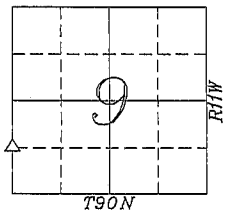
THE SW CORNER NW1/4 SW1/4 WAS SET AT THE THEORETICAL POSITION. CORNER WAS USED IN SURVEY OF PARCEL "A"
IN THE SOUTHWEST 1/4 OF SECTION 9.

PLAN-VIEW

NO SCALE

LEGEND:

- ▲ GOVERNMENT CORNER MONUMENT FOUND
- △ GOVERNMENT CORNER MONUMENT SET
1/2"x30" REBAR w/ORANGE PLASTIC
ID CAP #15943
- //— EXISTING FENCE



SW CORNER NW1/4 SW1/4
SEC 9-90-11
SET P-K NAIL 1.5'± EAST OF Q



Clapsaddle-Garber Associates, Inc
16 East Main Street
Marshalltown, Iowa 50158
Ph 641 752-6701
www.cgaconsultants.com

DRAWN

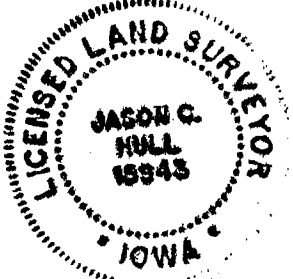
MCH

PROJECT NO.

73628.05

List Corners to be Indexed

Corners	Section	Township	Range
SW NW1/4, SW1/4	9	90N	11W



I hereby certify that this land surveying document was prepared and the related survey work was performed by me or under my direct personal supervision and that I am a duly Licensed Professional Land Surveyor under the laws of the State of Iowa.

Jason C. Hull
Jason C. Hull, P.L.S.

1-12-04
date

Iowa License No. 15943

My License Renewal Date is Dec. 31, 2004.