

SC
MISC
INDEX 4
MARGIN
PROOF
COMPARE

BLACK HAWK COUNTY IOWA:SS 027183
Filed for record APR 8, 2002 at
4:00 P.M. and recorded in Book 346
of MISC Page 226

Patricia H. Lee RECORDER
FEE 1-5.00/

ENV ANDERSON-BOGERT ENGINEERS & SURVEYORS INC
229 NORTHLAND CT NE
CEDAR RAPIDS IA 52402

SLSI 9-90

Prepared By: Leo Dale Wooder, L.S. #11809 Anderson-Bogert Engineers & Surveyors, Inc.
229 Northland Court N.E. Cedar Rapids, Iowa 52402 Phone: (319) 377-4629

UNITED STATES PUBLIC LAND SURVEY CORNER CERTIFICATE
OF

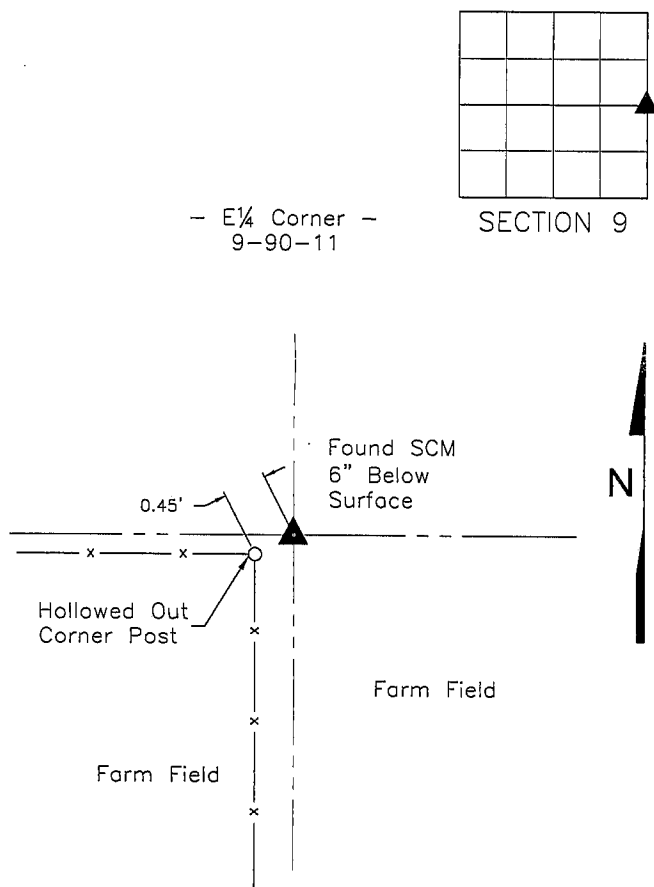
Land Survey Monuments situated in Section 9, Township 90 North, Range 11 West, of the Fifth Principal Meridian, Black Hawk County, Iowa.
Previously recorded in N/A in County Recorders Office.
(book, page, document number, ect.)

(Show reason for preparing this certificate, the evidence and detailed procedures used in establishing the corner positions and monumentation found or placed.)

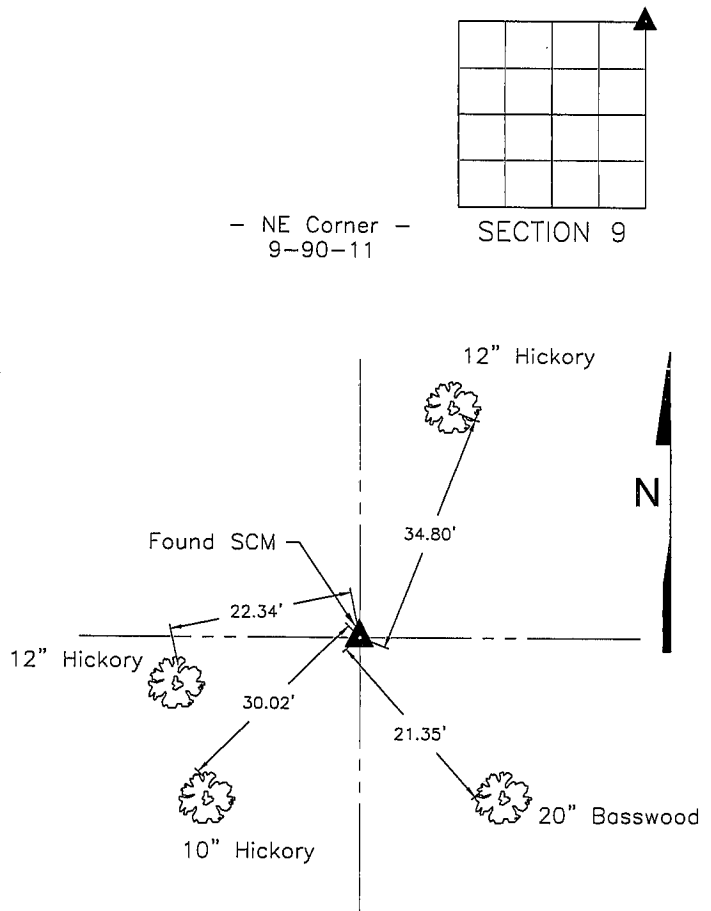
Monument Description and Remarks: Found Section Corner Marker at the E $\frac{1}{4}$ Corner of Section 9-90-11.
Found Section Corner Marker at the NE Corner of Section 9-90-11.

PLAN - VIEW

(Show a minimum of three reference ties to durable physical objects, relevant monuments and physical conditions that will enable recovery of the corner.)



Set $\frac{1}{2}$ " IR Next to Monument for Detection Purposes



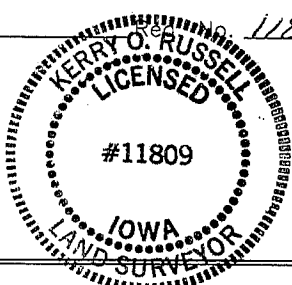
Nails Set in Trees with Survey Disks.
Set $\frac{1}{2}$ " IR for Detection Purposes.

I hereby certify that the survey work was completed and this certificate was prepared by me or under my direct personal supervision and that I am a duly licensed land surveyor under the laws of the state of Iowa.

Signature: *Kerry O. Russell*
Name typed or printed: Kerry O. Russell

Date: 3/27/02

SEAL



List Corners to be Indexed			
Corners	Section	Twp	Range
E $\frac{1}{4}$ Cor.	9	90N	11W
NE Cor.	9	90N	11W