

UNITED STATES PUBLIC LAND SURVEY CORNER CERTIFICATE  
OF

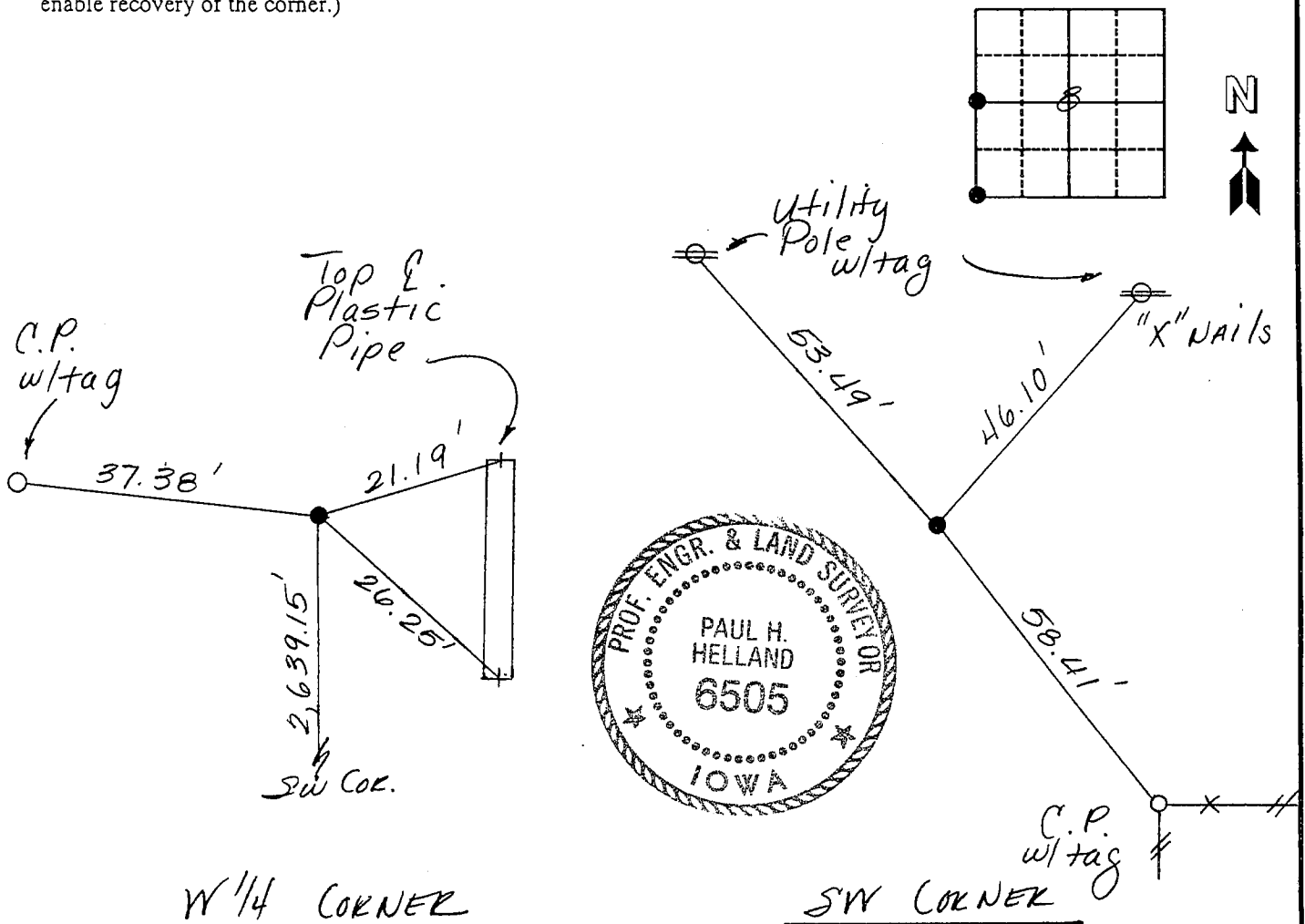
Land Survey Monuments situated in Section 8, Township 90, Range 11, of the Fifth Principal Meridian, Black Hawk County, Iowa.  
Previously recorded in Book \_\_\_\_\_, Page \_\_\_\_\_.

(Show reason for preparing this certificate, the evidence and detailed procedures used in establishing the corner positions and monumentation found or placed.)

Monument Description and Remarks: Survey done in SW 1/4 Sec. 8  
W 1/4 Cor. → Found 1/2"  $\phi$  rebar  
SW Cor. → Found 1/2"  $\phi$  rebar in A.C. MAT

PLAN - VIEW

(Show a minimum of three reference ties to durable physical objects, relevant monuments and physical conditions that will enable recovery of the corner.)



I HEREBY CERTIFY THAT THIS PLAT, MAP, SURVEY OR REPORT WAS MADE BY ME OR UNDER MY DIRECT PERSONAL SUPERVISION AND THAT I AM A DULY REGISTERED LAND SURVEYOR UNDER THE LAWS OF THE STATE OF IOWA.  
Paul H. Helland 3/22/96  
PAUL H. HELLAND, P.E. & R.L.S. IOWA REGISTRATION NO. 6505  
MY REGISTRATION EXPIRES DECEMBER 31, 1997

**HES** THUNDER RIDGE BANK BUILDING  
2322 WEST 1ST ST., SUITE B  
CEDAR FALLS, IOWA 50613  
319-266-0161  
HELLAND ENGINEERING & SURVEYING, LTD.

List Corners to be Indexed

Corners	Section	Twp	Range
W 1/4	8	90	11
SW	8	90	11

MISC. BK 319 p. 977