

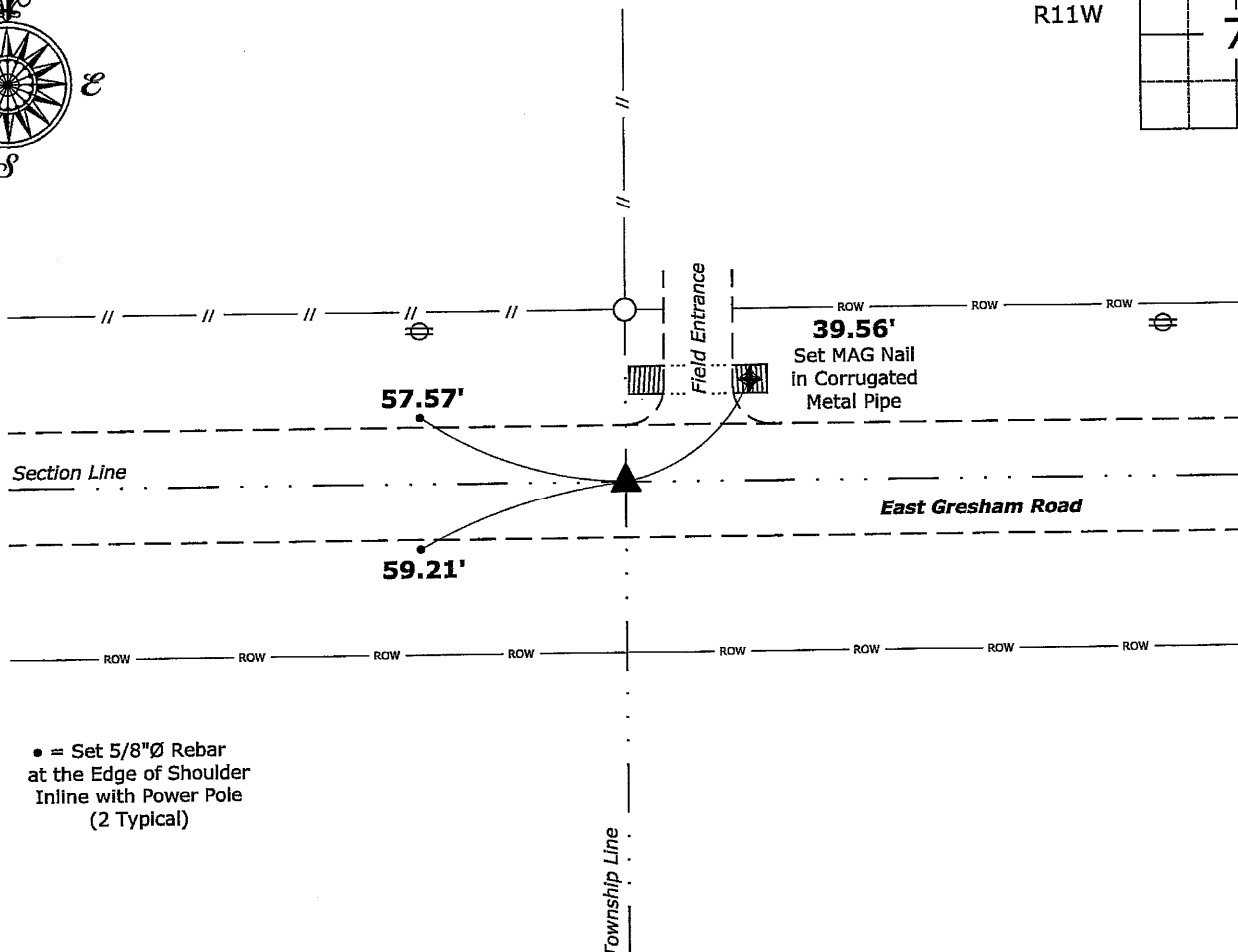
Prepared by & Return to: Isaiah M. Reicks, 2206 East Bremer Avenue, Waverly, IA 50677, Ph. 319-483-5187

Land Survey Monument situated in
Section **7**, Township **90** North, Range **11** West of the Fifth Principal Meridian, **Black Hawk** County, Iowa.
Not on file in the County Recorder's Office.

 $\{$

- Northwest Corner:** Found Standard Concrete Monument with information obtained from Cornerstone Ties Field Book 1, Page 32, of T90N R12W, located at the County Engineer's Office. Top of Monument was damaged, chiseled top smooth, and Set 1"Ø Bronze Survey Marker PLS 22468 at Top Center to perpetuate the Monument for this Corner.

A 4x4 grid with a black triangle in the top-left corner and the number 7 in the center.



● = Set 5/8"Ø Rebar
at the Edge of Shoulder
Inline with Power Pole
(2 Typical)

A circular seal for a Professional Land Surveyor in Iowa. The outer ring contains the text "PROFESSIONAL LAND SURVEYOR" at the top and "IOWA" at the bottom, separated by four stars. The inner circle contains the name "ISAIAH M. REICKS" and the number "22468".

Isaiah M. Reicks 12-22-22

Corner	Section	Twp.	Range
NW	7	90	11

Project Number: 2022-592

FB: Black Hawk 1, Pgs. 45-46