

UNITED STATES PUBLIC LAND SURVEY CORNER CERTIFICATE

OF

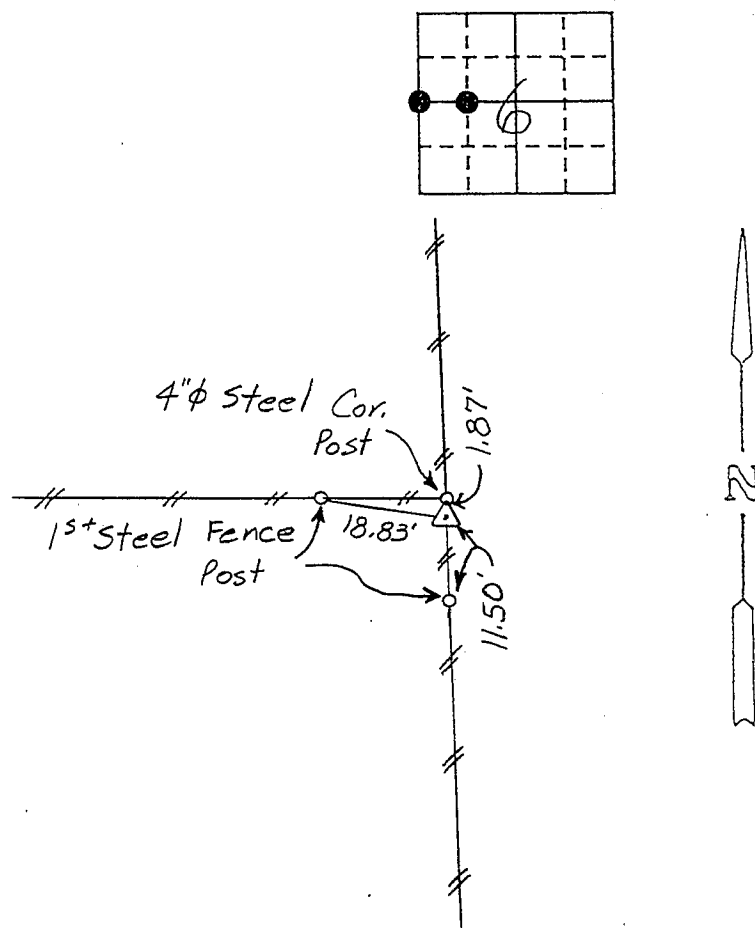
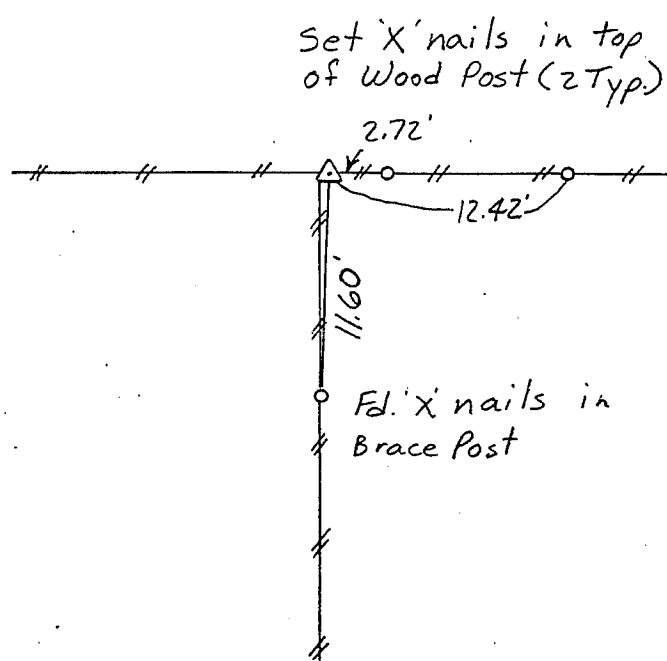
Land Survey Monuments situated in Section 6, Township 90 NORTH, Range 11 WEST, of the Fifth Principal Meridian, BLACK HAWK County, Iowa.
 Previously recorded in (NONE) in County Recorder's Office.
 (book, page, document number, etc.)

Show reason for preparing this certificate, the evidence and detailed procedures used in establishing the corner positions and monumentation found or placed.)

Monument Description and Remarks: W 1/4 CORNER, SECTION 6-T90N-R11W:
SET 1/2" ϕ REBAR WITH CAP FROM TIES.
SE CORNER, SW 1/4-NW 1/4, SECTION 6-T90N-R11W: SET 1/2" ϕ REBAR
W/ CAP ON LINE W/ CENTER & W 1/4 CORNER AND IN LINE WITH
EXISTING NORTH-SOUTH FENCE.

PLAN - VIEW

(Show a minimum of three reference ties to durable physical objects, relevant monuments and physical conditions that will enable recovery of the corner.)



W 1/4 CORNER, SECTION 6-T90N-R11W

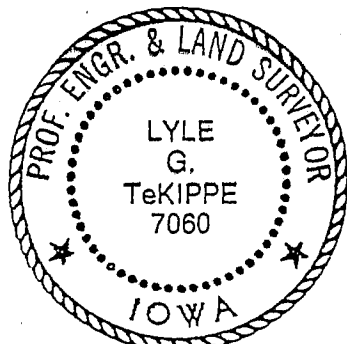
SE CORNER
SW 1/4-NW 1/4, SECTION 6-T90N-R11W

I hereby certify that the survey work was completed and this certificate was prepared by me or under my direct personal supervision and that I am a duly registered land surveyor under the laws of the state of Iowa.

Signature: Lyle G. TeKippe
 Name typed or printed: Lyle G. TeKippe

Date: 12-2-92 Reg. No. 7060

My Registration Expires December 31, 1992



SEAL

Corners	List Corners to be Indexed		
	Section	Twp	Range
<u>W 1/4</u>	<u>6</u>	<u>90N</u>	<u>11W</u>
<u>SE COR.</u>			
<u>SW 1/4-NW 1/4</u>	<u>6</u>	<u>90N</u>	<u>11W</u>

MISC. BK 304 p. 208