

I ^{VS}
P
Z

Document Number: 2007020400

Date: Mar 30, 2007 4:30:00 pm

Aud Fee: 0.00 Rec Fee: 5.00

Trans Tax:	0.00	Rec.Management Fee:	1.00
------------	------	---------------------	------

Trans Fax:	0.00	Non-Standard Page Fee:	0.00
E-Com Fee:	1.00		

Filed for record in Black Hawk County, Iowa
Judith A. McCarthy, County Recorder

Jeffrey P. Helland, 1107 Technology Parkway, Cedar Falls, Iowa 50613-6951, (319)-266-0161

UNITED STATES PUBLIC LAND SURVEY CORNER CERTIFICATE OF

LAND SURVEY MONUMENTS SITUATED IN SECTION NO. 5, TOWNSHIP NO. 90 NORTH, RANGE
NO. 11 WEST OF THE FIFTH PRINCIPAL MERIDIAN, BLACK HAWK COUNTY, IOWA.
PREVIOUSLY RECORDED IN 345 MISC. 433

(SHOW REASON FOR PREPARING THIS CERTIFICATE, THE EVIDENCE AND DETAILED PROCEDURES USED IN ESTABLISHING THE CORNER POSITIONS AND MONUMENTATION FOUND OR PLACED.)

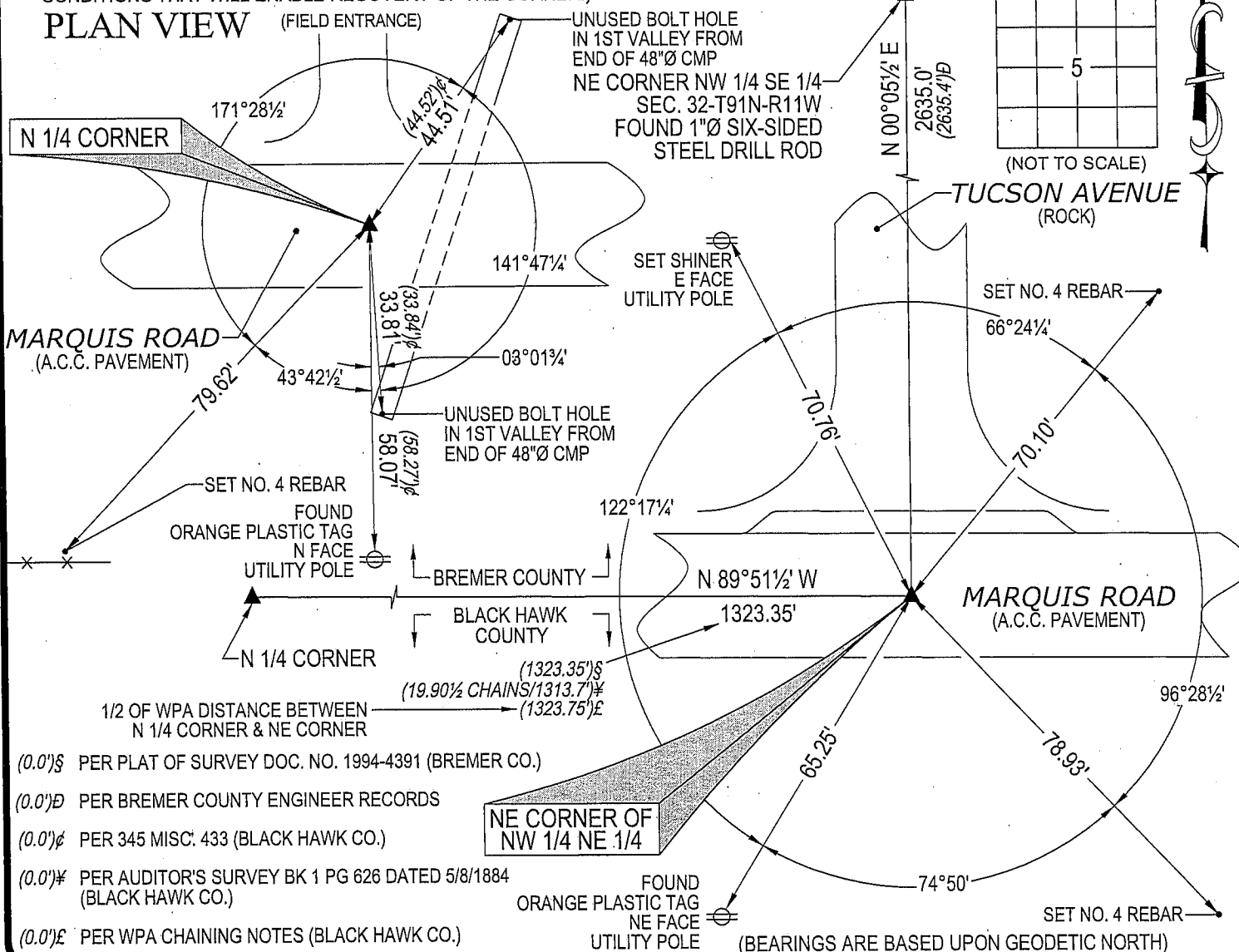
MONUMENT DESCRIPTION AND REMARKS: NO USPLSCC ON FILE FOR NE CORNER NW FRL 1/4 NE FRL 1/4. 345 MISC. 433 TIES HAVE CHANGED. SURVEY COMPLETED IN THE SW 1/4 SE 1/4 OF SEC. 32-T91N-R11W.

-N 1/4 CORNER: ALL BREMER COUNTY ENGINEER REFERENCE TIES AND BLACK HAWK COUNTY ENGINEER REFERENCE TIES HAVE BEEN OBLITERATED. PLAT OF SURVEY BY PAUL H. HELLAND DATED 11/15/1994 RECORDED IN DOC. NO. 1994-4391 (BREMER CO.) CALLS FOR [FOUND PIN.] USPLSCC 345 MISC. 433 (BLACK HAWK COUNTY) CALLS FOR [FOUND 5/8"Ø REBAR FLUSH w/TOP A/C PAV'T IN CENTER PAINTED X.] FOUND 5/8"Ø IRON PIN IN A.C.C. PAVEMENT.

- **NE CORNER NW FRL 1/4 NE FRL 1/4:** ALL BREMER COUNTY ENGINEER REFERENCE TIES OBLITERATED. BREMER COUNTY TIES DATED 7/2/1942 CALLS FOR [SET DRILL ROD.] PLAT OF SURVEY BY PAUL H. HELLAND DATED 11/15/1994 RECORDED IN DOC. NO. 1994-4391 (BREMER CO.) CALLS FOR [FOUND PIN.] FOUND 1/2"Ø IRON PIN IN A.C.C. PAVEMENT.

(SHOW A MINIMUM OF THREE REFERENCE TIES TO DURABLE PHYSICAL OBJECTS, RELEVANT MONUMENTS AND PHYSICAL CONDITIONS THAT WILL ENABLE RECOVERY OF THE CORNER.)

PLAN VIEW

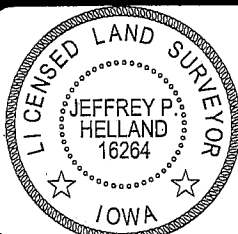


HELLAND ENGINEERING & SURVEYING, LTD.
1107 Technology Parkway
Cedar Falls, Iowa 50613-6951
(319)-266-0161

SHINER = 8D NAIL & 1 5/16"Ø METAL SHINER
OPC = PLASTIC CAP (O=ORANGE, R=RED, Y=YELLOW)

(00") RECORDED AS

FILE NAME: 07-124C3.DWG



I hereby certify that this land surveying document was prepared and the related survey work was performed by me or under my direct personal supervision and that I am a duly licensed Land Surveyor under the laws of the State of Iowa.

Jeffrey P. Helland 3/6/07
Jeffrey P. Helland
License Number 16264
My license renewal date is December 31, 2007.
All pages or sheets are covered by this seal except:

LIST CORNERS TO BE INDEXED

CORNER	SECTION	TOWNSHIP	RANGE
N 1/4 CORNER	5	90N	11W
NE CORNER	5	90N	11W
NW 1/4 NE 1/4			