

## BLACK HAWK COUNTY ENGINEER'S OFFICE

PREPARED BY: BLACK HAWK COUNTY ENGINEERS OFFICE  
316 E. FIFTH STREET, ROOM 211 WATERLOO, IOWA 50703

PH.# (319) 833-3008  
FAX.# (319) 833-3139 SLSI 9-94  
CERT 12-96

UNITED STATES PUBLIC LAND SURVEY CORNER CERTIFICATE OF  
Land Survey Monuments situated in Section 04, Township 90 N,  
Range 11 W, of the Fifth Principal Meridian, BLACK HAWK County, Iowa.  
Previously recorded in Misc. Book N/A, Page N/A, in County Recorder's Office.

(Show reason for preparing this certificate, the evidence and detailed procedures used in establishing the corner positions and monumentation found or placed.)

Monument Description and Remarks: W. 1/4 CORNER SECTION 04-90-11  
FOUND #5 REBAR IN ACC @ 1.5' W. C.L. HORIZONTAL CURVE.  
UTILIZED FOR ESTABLISHMENT OF CENTER SAID SECTION, PER RECORD.

## PLAN - VIEW

(Show a minimum of three reference ties to durable physical objects, relevant monuments and physical conditions that will enable recovery of the corner.)

NOT TO SCALE



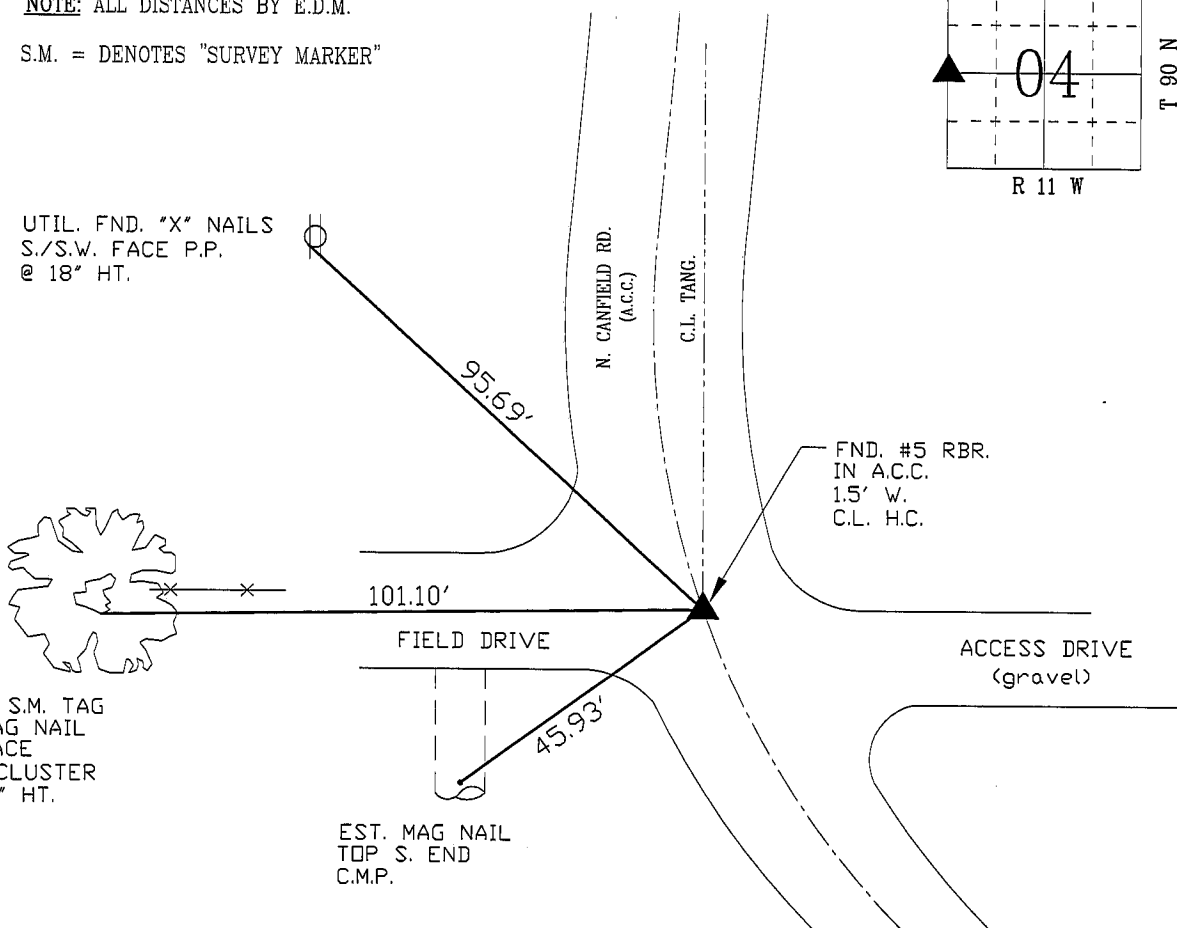
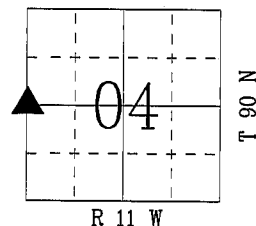
NOTE: ALL DISTANCES BY E.D.M.

S.M. = DENOTES "SURVEY MARKER"

UTIL. FND. "X" NAILS  
S./S.W. FACE P.P.  
@ 18" HT.

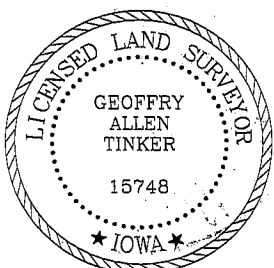
EST. S.M. TAG  
W/MAG NAIL  
S. FACE  
36" CLUSTER  
@ 60" HT.

EST. MAG NAIL  
TOP S. END  
C.M.P.



FIELD SURVEY: G.T. & C.W. 12/13/02  
PREPARED BY: G.T. & C.W. 01/20/03

## CERTIFICATION



I hereby certify that this land surveying document was prepared and the related survey work was performed by me or under my direct personal supervision and that I am a duly licensed Land Surveyor under the laws of the State of Iowa.

*Geoffrey Allen Tinker* 01/20/03  
Geoffrey Allen Tinker (date)

License Number 15748

My license renewal date is December 31, 2004

Pages or sheets covered by this seal:

This Land Corner Certificate Only.

## LIST CORNERS TO BE INDEXED

Corner	Section	Township	Range
W. 1/4	04	90 N	11 W
E. 1/4	05	90 N	11 W