

PREPARED BY: BLACK HAWK COUNTY ENGINEERS OFFICE PH.# (319) 833-3008 SLSI 9-94
316 E. FIFTH STREET, ROOM 211 WATERLOO, IOWA 50703 FAX.# (319) 833-3139 CERT 12-96

UNITED STATES PUBLIC LAND SURVEY CORNER CERTIFICATE OF
Land Survey Monuments situated in Section 04, Township 90 N,
Range 11 W, of the Fifth Principal Meridian, BLACK HAWK County, Iowa.
Previously recorded in Misc. Book N/A, Page N/A, in County Recorder's Office.

(Show reason for preparing this certificate, the evidence and detailed procedures used in establishing the corner positions and monumentation found or placed.)

Monument Description and Remarks: S.W. CORNER SECTION 04-90-11
FOUND 1" STEEL PIN @ 1" DEEP C.L. INTERSECTION OF HWY. #281 AND
E. GRESHAM ROAD TO WEST.

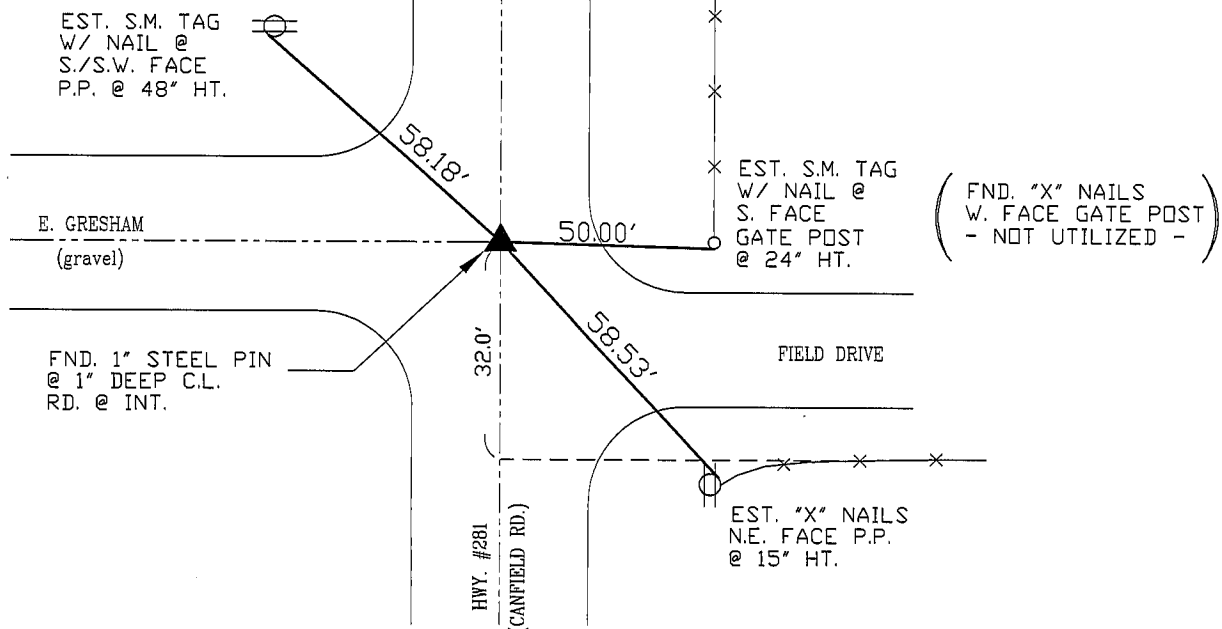
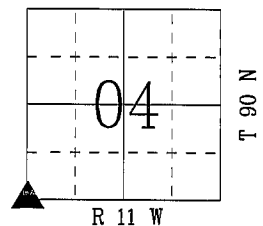
PLAN - VIEW

(Show a minimum of three reference ties to durable physical objects, relevant monuments and physical conditions that will enable recovery of the corner.)

NOT TO SCALE

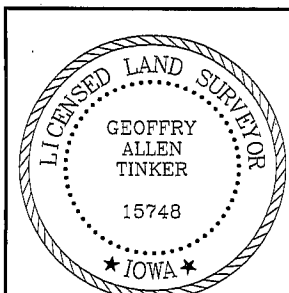
NOTE: ALL DISTANCES PLUMB

S.M. = DENOTES "SURVEY MARKER"



FIELD SURVEY: G.T. & C.W. 12/13/02
PREPARED BY: G.T. & C.W. 01/20/03

CERTIFICATION



I hereby certify that this land surveying document was prepared and the related survey work was performed by me or under my direct personal supervision and that I am a duly licensed Land Surveyor under the laws of the State of Iowa.

Geoffrey Allen Tinker 01/20/03
Geoffrey Allen Tinker (date)

License Number 15748

My license renewal date is December 31, 2004

Pages or sheets covered by this seal:

This Land Corner Certificate Only.

LIST CORNERS TO BE INDEXED

Corner	Section	Township	Range
S.W. COR.	04	90 N	11 W
S.E. COR.	05	90 N	11 W
N.W. COR.	09	90 N	11 W
N.E. COR.	08	90 N	11 W