



Doc ID: 004004080001 Type: GEN  
Kind: CORNER  
Recorded: 12/17/2009 at 09:25:38 AM  
Fee Amt: \$9.00 Page 1 of 1  
Black Hawk County Iowa  
JUDITH A MCCARTHY RECORDER  
File **2010-00011894**

*Wm*

WAYNE CLAASSEN ENGINEERING AND SURVEYING, INC.  
P.O. BOX 898 WATERLOO, IOWA 50704-0898

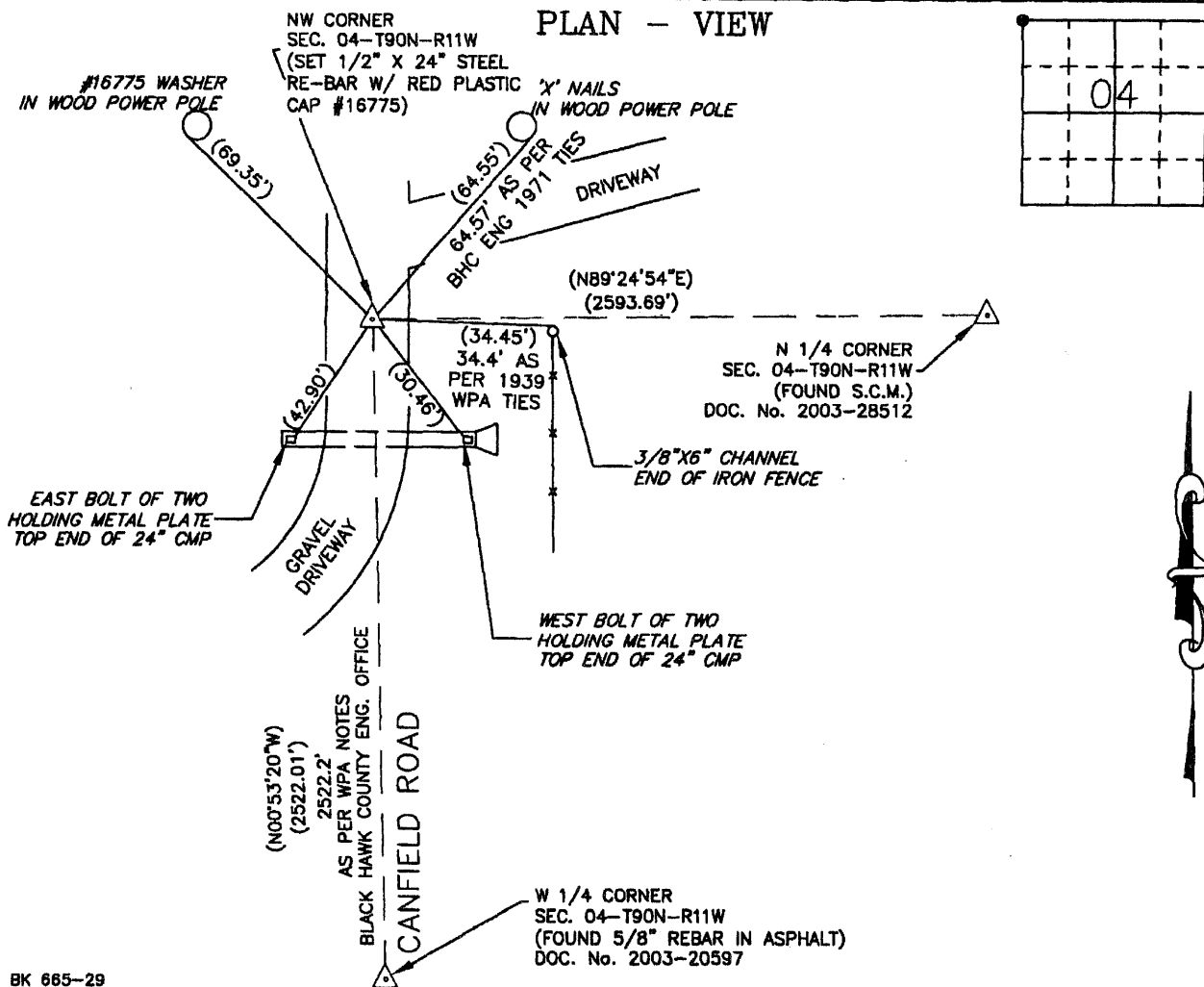
PHONE: (VOICE) 319-235-6294  
(FAX) 319-235-0028

## UNITED STATES PUBLIC LAND SURVEY CORNER CERTIFICATE

Land Survey Monuments situated in Section 04, Township 90 North, Range 11 West, of the Fifth Principal Meridian, Black Hawk County, Iowa.  
Previously recorded in \_\_\_\_\_ in County Recorder's Office.  
(book, page, document number, etc.)

### Monument Description and Remarks

No certificate on file. WPA notes from 1939 say "found iron pipe 1 3/4"x18" c/m set." Notes also say "...dug hole 5ft sq. and 18" deep found iron pipe 1 3/4"x18" lowered all evidence in place and set c/m on top." Found 6" nail 4" deep, tied out nail and dug in that location and found another 6" nail under first one. Dug and probed 3' deep and did not find SCM. Set 1/2"x24" steel rebar with red plastic cap #16775 at location of nail. Nail matched reasonably well with Black Hawk County (BHC) Engineer's Office ties and WPA ties.



BK 665-29

I hereby certify that this land surveying document was prepared and the related survey work was performed by me or under my direct personal supervision and that I am a duly Licensed Land Surveyor under the laws of the State of Iowa.

Signature: David L. Schell  
David L. Schell, L.S.

Date: DEC 15, 2009 Lic. No. 16775

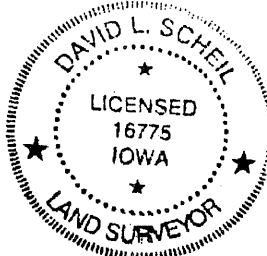
Pages or Sheets Covered by this Seal: THIS SHEET ONLY.

My license renewal date is December 31, 2010

SEAL

### List Corners to be Indexed

Corners	Section	Twp	Range
NW CORNER,	04	90 N	11 W



(9.00)