

INDEX BLACK HAWK COUNTY, IOWA:SS FEE BOOK # 20 03 28512  
PROOF FILED FOR RECORD APR 1 2003 AT 4:00 P. M. FEE 1-5.00/  
COMPARED *William King*

BLACK HAWK COUNTY RECORDER

WAYNE CLAASSEN ENGINEERING AND SURVEYING INC

WAYNE CLAASSEN ENGINEERING AND SURVEYING, INC.  
P.O. BOX 898 WATERLOO, IOWA 50704-0898

PHONE: (VOICE) 319-235-6294  
(FAX) 319-235-0028

## UNITED STATES PUBLIC LAND SURVEY CORNER CERTIFICATE

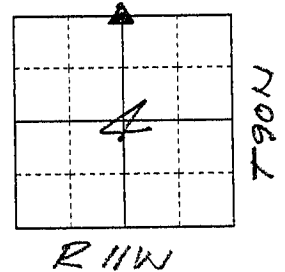
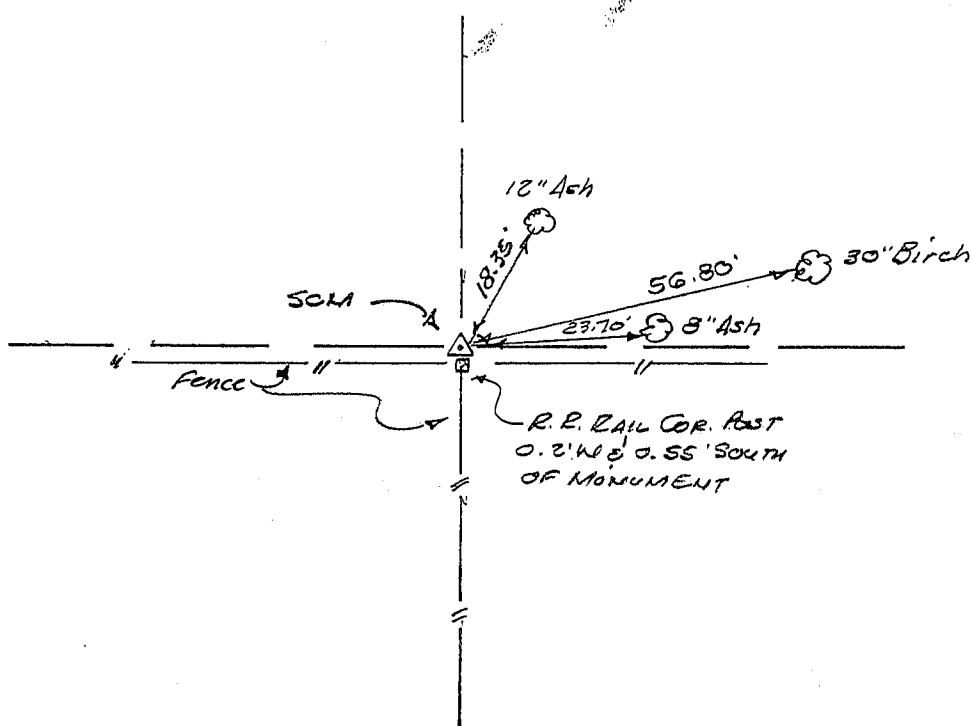
Land Survey Monuments situated in Section 4, Township 90N, Range 11W, of the Fifth Principal Meridian, Black Hawk County, Iowa.  
Previously recorded in N/A in County Recorder's Office.  
(book, page, document number, etc.)

(Show reason for preparing this certificate, the evidence and detailed procedures used in establishing the corner positions and monumentation found or placed.)

Monument Description and Remarks Found SCM, 4" exposed at 0.55' North of R.R. rail  
corner post. N 1/4 Corner 4-90-11. See retracement survey by B.H. Co. Engr.  
Office Fee Book 2003. 20591.

### PLAN - VIEW

(Show a minimum of three reference ties to durable physical objects, relevant monuments and physical conditions that will enable recovery of the corner.)



581-8

I hereby certify that the survey work was completed and this certificate was prepared by me or under my direct personal supervision and that I am a duly licensed land surveyor under the laws of the state of Iowa.

Signature: *F. William King*  
(Name typed or printed:) F. William King

Date: 3-23-03 Lic. No. 8033

SEAL

#### List Corners to be Indexed

Corners	Section	Twp	Range
<u>N 1/4</u>	<u>4</u>	<u>90N</u>	<u>11W</u>

