



Doc ID: 004006860001 Type: GEN
Kind: CORNER
Recorded: 12/21/2009 at 01:20:30 PM
Fee Amt: \$9.00 Page 1 of 1
Black Hawk County Iowa
JUDITH A MCCARTHY RECORDER

File 2010-00012119

Enw.
WAYNE CLAASSEN ENGINEERING AND SURVEYING, INC.
P.O. BOX 898 WATERLOO, IOWA 50704-0898

PHONE: (VOICE) 319-235-6294
(FAX) 319-235-0028

UNITED STATES PUBLIC LAND SURVEY CORNER CERTIFICATE

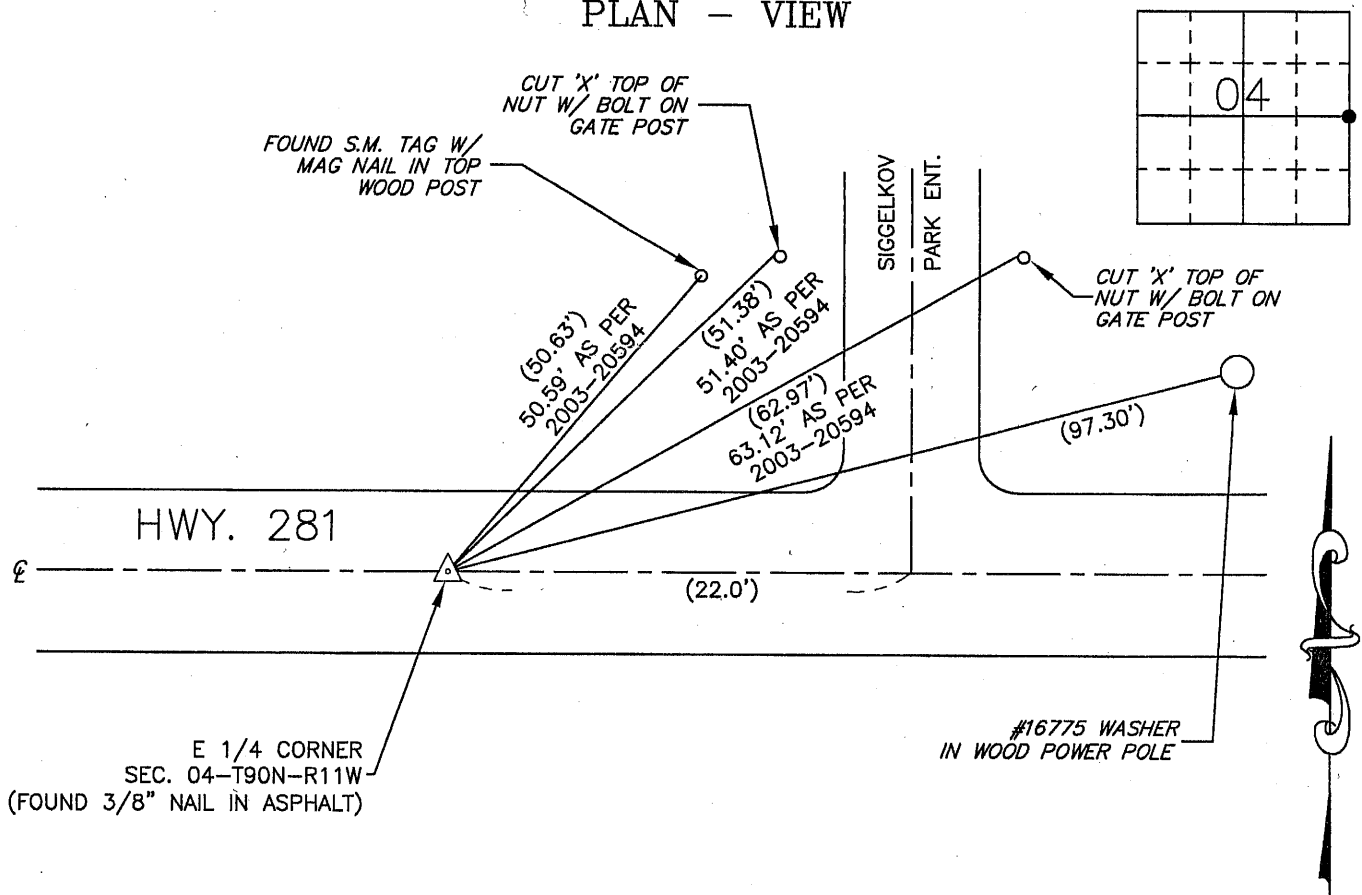
Land Survey Monuments situated in Section 04, Township 90 North, Range 11 West, of the Fifth Principal Meridian, Black Hawk County, Iowa.

Previously recorded in Document No. 2003-20594 in County Recorder's Office.
(book, page, document number, etc.)

Monument Description and Remarks

Found 3/8" nail at surface of asphalt pavement. Ties to this nail match well with ties in Document No. 2003-20594. This certificate was filed because the corner monument in this certificate is different from the corner monument in Document No. 2003-20594.

PLAN - VIEW



BK 665-29

I hereby certify that this land surveying document was prepared and the related survey work was performed by me or under my direct personal supervision and that I am a duly Licensed Land Surveyor under the laws of the State of Iowa.

Signature: David L. Scheil
David L. Scheil, L.S.

Date: DEC. 15, 2009 Lic. No. 16775

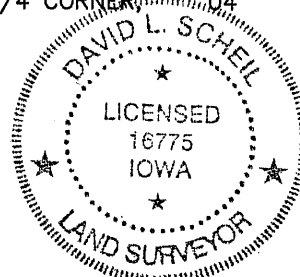
Pages or Sheets Covered by this Seal: THIS SHEET ONLY.

My license renewal date is December 31, 2010

SEAL

List Corners to be Indexed

Corners	Section	Twp	Range
E 1/4 CORNER	04	90 N	11 W



9.00