

BLACK HAWK COUNTY ENGINEER'S OFFICE

PREPARED BY: BLACK HAWK COUNTY ENGINEERS OFFICE  
316 E. FIFTH STREET, ROOM 211 WATERLOO, IOWA 50703

PH.# (319) 833-3008  
FAX.# (319) 833-3139

SLSI 9-94  
CERT 12-96

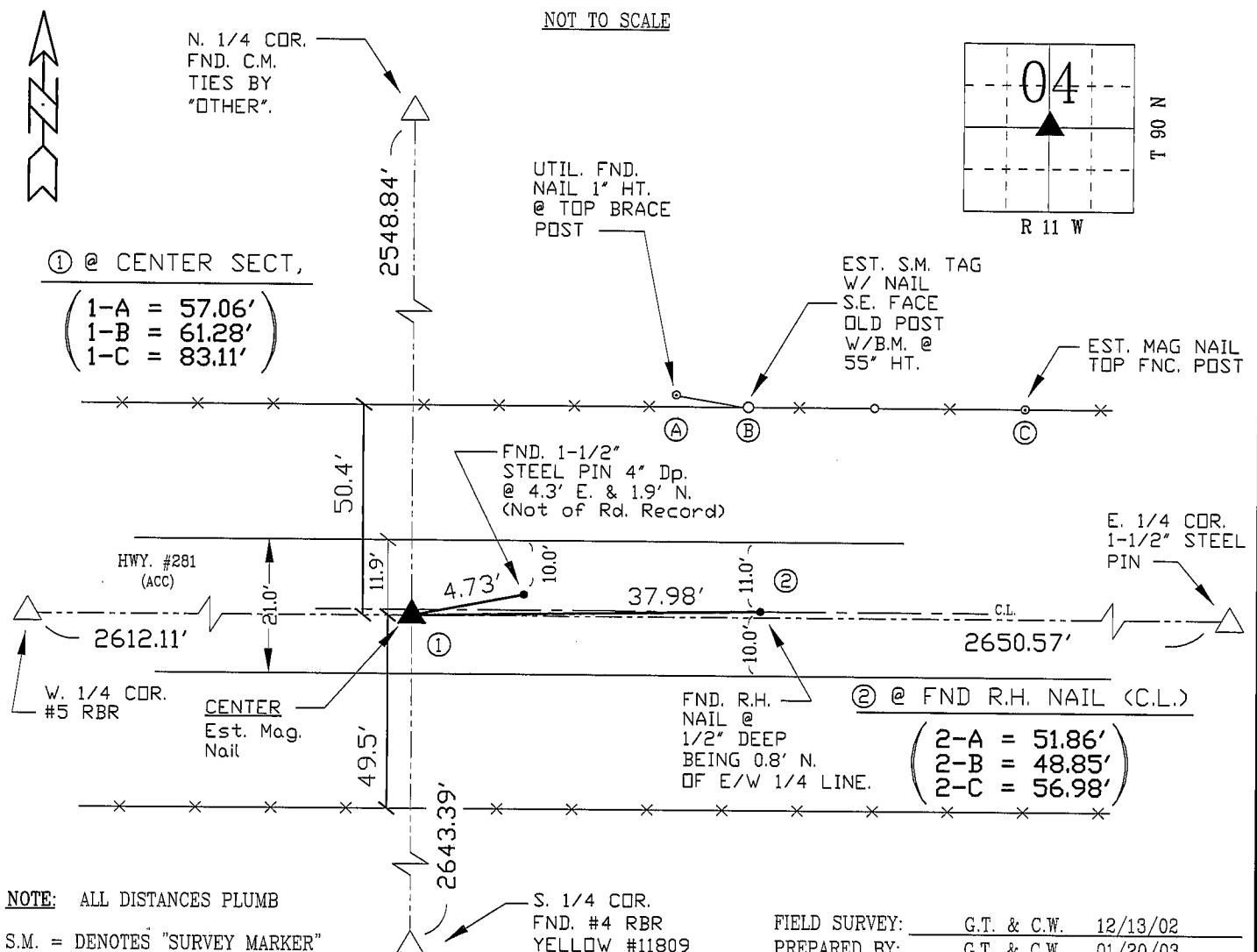
UNITED STATES PUBLIC LAND SURVEY CORNER CERTIFICATE OF  
Land Survey Monuments situated in Section 04 , Township 90 N ,  
Range 11 W , of the Fifth Principal Meridian, BLACK HAWK County, Iowa.  
Previously recorded in Misc. Book N/A , Page N/A , in County Recorder's Office.

(Show reason for preparing this certificate, the evidence and detailed procedures used in establishing the corner positions and monumentation found or placed.)

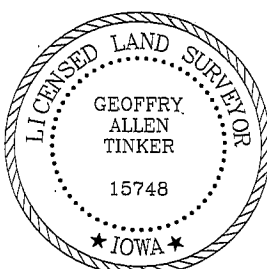
Monument Description and Remarks: CENTER 04-90-11, EST. MAG. NAIL  
EST. CENTER OF SECTION BY INTERSECTION OF FOUR 1/4 CORNERS.  
FND. 1-1/2" STEEL PIN @ 4.3' E. & 1.9' N. BEING "NOT" ON E/W 1/4 COR.  
LINE, NOR OF PLAN RECORD, w/ I.D.O.T. REF., BEING OF "UNKNOWN" SOURCE.  
ALSO FOUND NAIL TO EAST, BEING A 'BEST FIT" REFERENCE TO I.D.O.T. ROW  
CORNERS, HOWEVER FITING RECORD "SECTIONLINE" MEAS. vs. "CENTERLINE" MEAS.

## PLAN - VIEW

(Show a minimum of three reference ties to durable physical objects, relevant monuments and physical conditions that will enable recovery of the corner.)



## CERTIFICATION



I hereby certify that this land surveying document was prepared and the related survey work was performed by me or under my direct personal supervision and that I am a duly licensed Land Surveyor under the laws of the State of Iowa.

Geoffrey Allen Tinker 01/20/03  
(date)

License Number 15748

My license renewal date is December 31, 2004

Pages or sheets covered by this seal:

This Land Corner Certificate Only.

LIST CORNERS TO BE INDEXED

Corner      Section - Township - Range  
CENTER      04            90 N            11 W