

Number: 202000006987
Recorded: 10/16/2019 at 10:14:21.0 AM
County Recording Fee: \$7.00
Iowa E-Filing Fee: \$3.00
Combined Fee: \$10.00
Revenue Tax:
Sandie L. Smith, RECORDER
Black Hawk County, Iowa

Prepared by & Return to: Herold - Reicks Surveying, 2206 East Bremer Avenue, Waverly, IA 50677, Ph. 319-483-5187

United States Public Land Survey Corner Certificate

Land Survey Monument situated in
Section 2, Township 90 North, Range 11 West of the Fifth Principal Meridian, Black Hawk County, Iowa.
Not on file in the County Recorder's office.

This certificate is being prepared in compliance with Iowa Code Chapter 355.11 because:



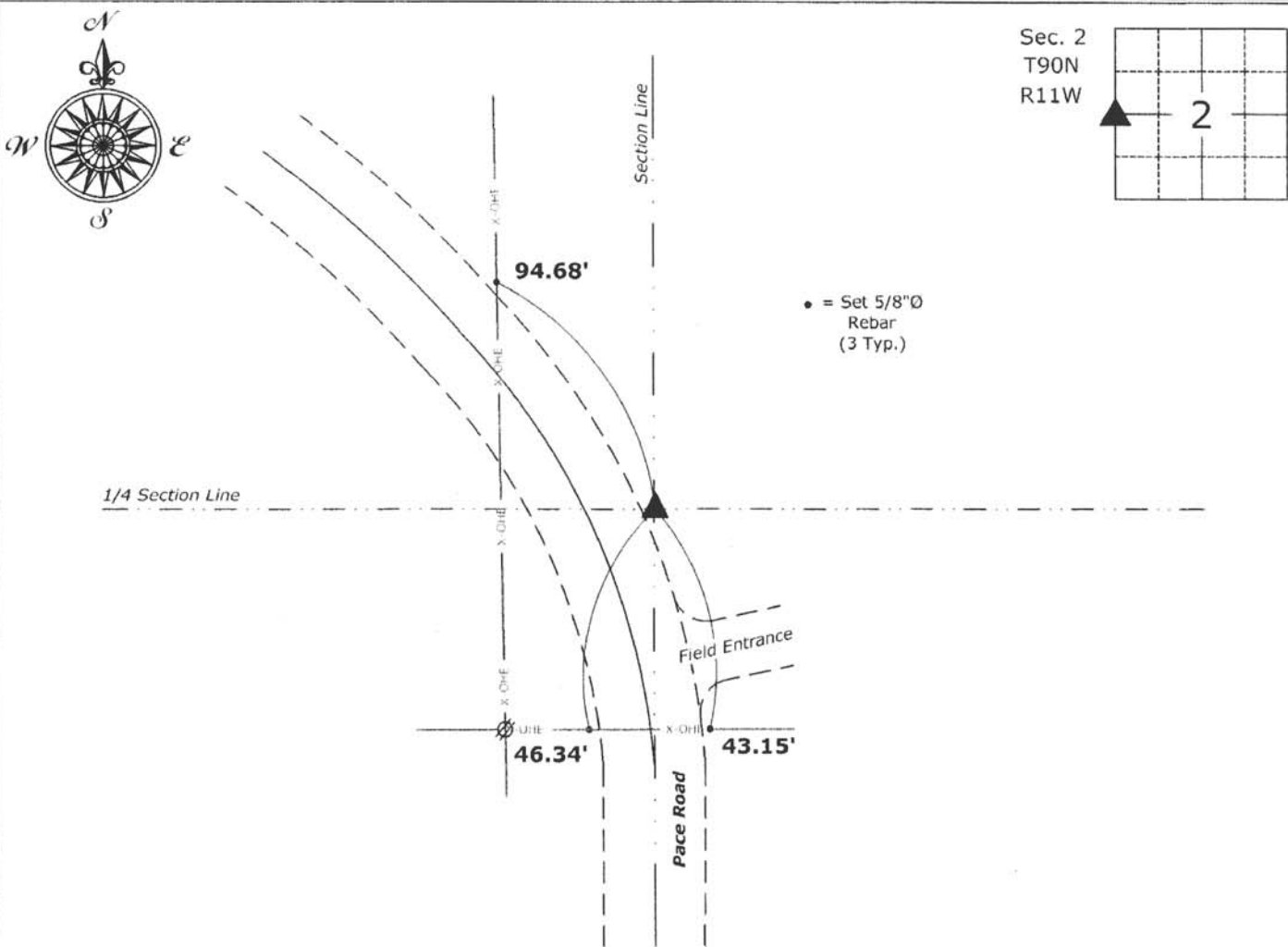
- ☒ There is no certificate on file for this corner.
- ☐ There are no longer three valid ties of record.
- ☐ There are changes to reference ties of record.
- ☐ There is change of monumentation of record.
- ☐ To clarify description of record monument (ties).

Monument Description and Remarks:

West 1/4 Corner: Set 5/8"Ø Rebar w/2"Ø Aluminum Cap PLS 22468 on a line from the Northwest Quarter to and across the Northwest Corner of the Southwest Quarter of the Northwest Quarter and calculated based on proportionate distance per the GLO Plat .

Plan View

(Show a minimum of three reference ties to durable physical objects, relevant monuments and physical conditions that will enable recovery of the corner.)



West 1/4 Corner of Section 2-90-11
Set 5/8"Ø Rebar w/2"Ø Aluminum Cap PLS 22468



I hereby certify that this land surveying document was prepared and the related survey work was performed by me or under my direct personal supervision and that I am a duly licensed Land Surveyor under the laws of the State of Iowa.

Isaiah M. Reicks 10-15-19
Isaiah M. Reicks Date:

License number 22468
My license renewal date is December 31, 2019.
Sheets covered by this seal: Individual sheet only

List Corner to be Indexed

Corner	Section	Twp.	Range
W 1/4	2	90	11

Project Number: 2019-569

FB: Black Hawk 10, Pgs. 38 & 41