

*Patricia A. Jess*

ENV KESS &amp; ASSOCIATES

Kirk D. Eschliman, P.L.S. Iowa Lic. No. 9961, 723 Broadway Street, Waterloo, Iowa 50703 - Phone: 319-234-0509

UNITED STATES PUBLIC LAND SURVEY CORNER CERTIFICATE  
OFLAND SURVEY MONUMENTS SITUATED IN SECTION TWO (02), TOWNSHIP NINETY (90) NORTH  
RANGE ELEVEN (11) WEST, OF THE FIFTH PRINCIPAL MERIDIAN, BLACK HAWK COUNTY, IOWA.  
PREVIOUSLY RECORDED IN (NOT PREVIOUSLY RECORDED) (BOOK, PAGE, DOCUMENT NUMBER, ETC.) IN THE COUNTY RECORDER'S OFFICE.

(SHOW REASON FOR PREPARING THIS CERTIFICATE, THE EVIDENCE AND DETAILED PROCEDURES USED IN ESTABLISHING THE CORNER POSITIONS AND MONUMENTATION FOUND OR PLACED.)

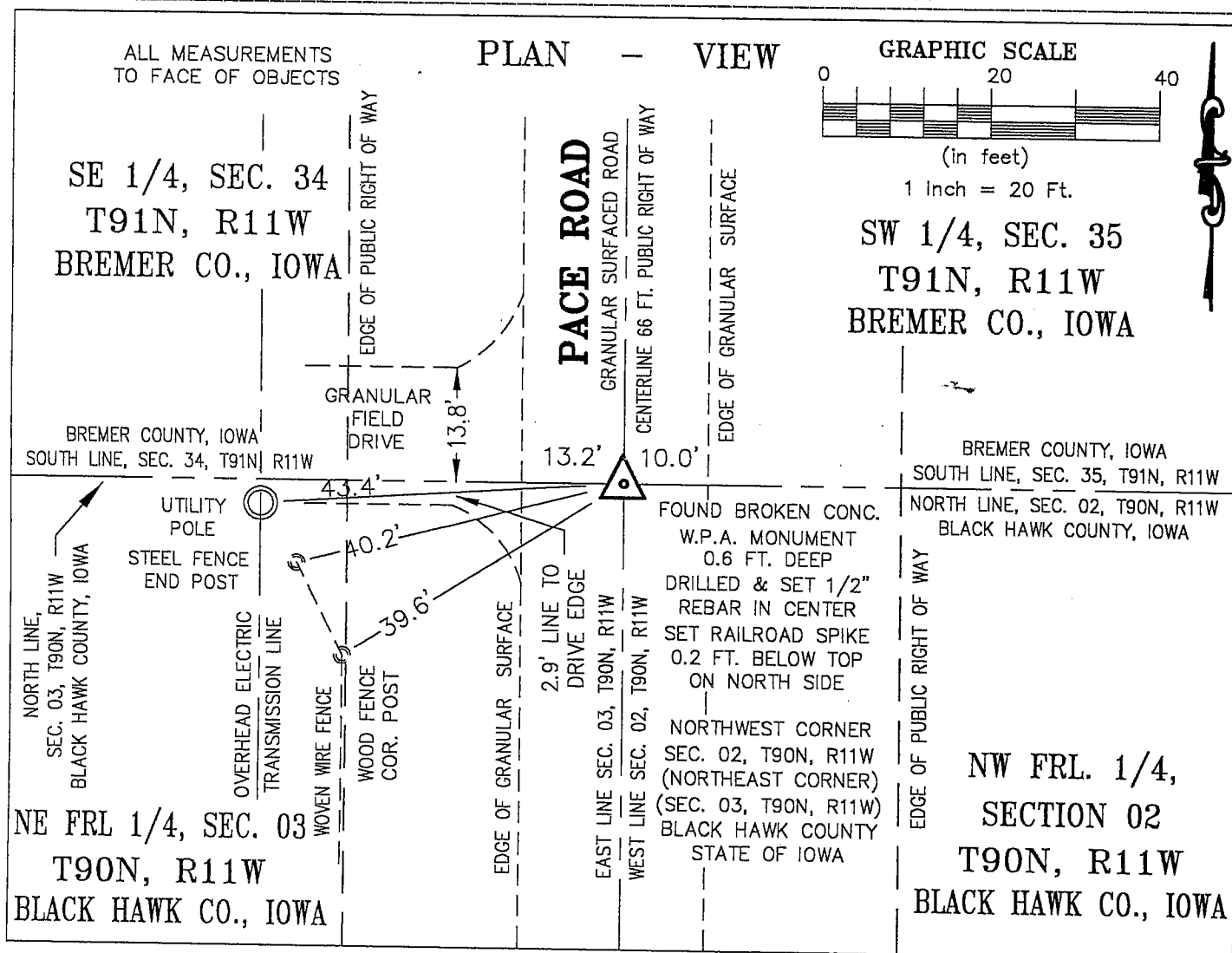
## MONUMENT DESCRIPTION AND REMARKS:

CURRENT SECTION CORNER CERTIFICATE NOT ON FILE IN THE BLACK HAWK COUNTY ENGINEER'S OFFICE

FOUND BROKEN W.P.A. CONCRETE MONUMENT, 0.6 FT. BELOW GRANULAR SURFACE OF PACE ROAD

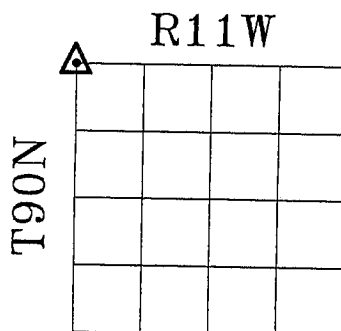
DRILLED AND PLACED 1/2" REBAR STUB IN CENTER OF MONUMENT AND PLACED RAILROAD SPIKE

0.2 FT. BELOW TOP OF MONUMENT ON NORTH SIDE TO AID IN FUTURE LOCATION.

I HEREBY CERTIFY THAT THIS LAND SURVEYING DOCUMENT  
WAS PREPARED AND RELATED SURVEY WORK WAS  
WAS PERFORMED BY ME OR UNDER MY DIRECT PERSONAL  
SUPERVISION AND THAT I AM A DULY LICENSED LAND  
SURVEYOR UNDER THE LAWS OF THE STATE OF IOWA.*Kirk D. Eschliman* DATE: 12/09/2004KIRK D. ESCHLIMAN, P.L.S. IOWA LIC. NO. 9961  
MY LICENSE RENEWAL DATE IS DECEMBER 31, 2005  
PAGES OR SHEETS COVERED BY THIS SIGNATURE & SEAL: SHEET 1 OF 1FOR: SHIRLEY M. CHASE  
11045 FAIRBANK ROAD  
FAIRBANK, IOWA 50629REQ. BY: SHIRLEY CHASE  
FAIRBANK, IOWAKESS & ASSOCIATES, INC.  
PROFESSIONAL LAND SURVEYORS : 723 BROADWAY, WATERLOO, IOWA 50703-5811  
DATE: 12/09/2004 C.A.D.D. FILE: 03B22SCC1.DWG PROJECT NO.: 03B22

## List of corners to be indexed:

Corners	Section	Township	Range
NW COR	02	T90N	R11W
NE COR	03	T90N	R11W



SECTION 02