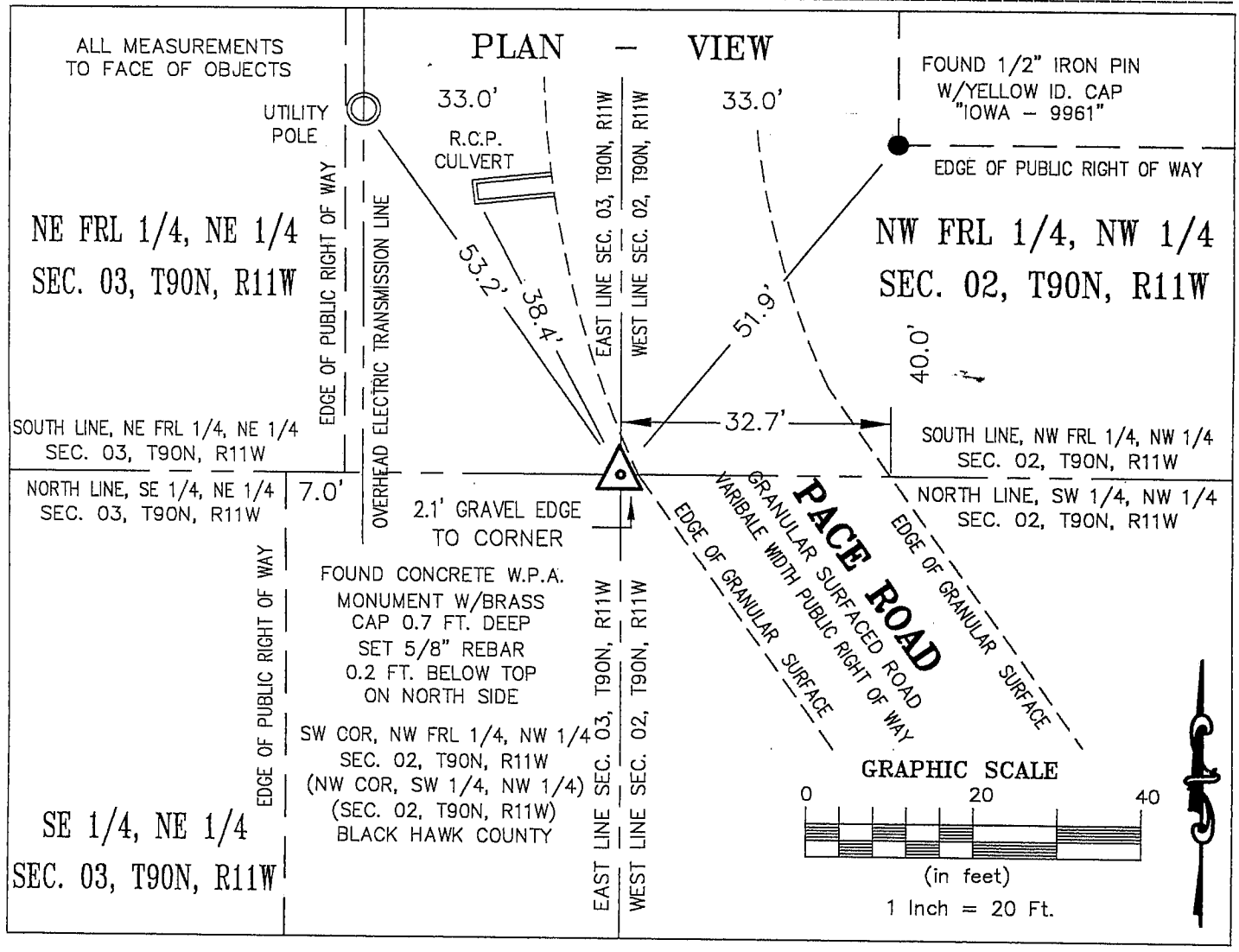


ENV KESS & ASSOCIATES

Kirk D. Eschliman, P.L.S. Iowa Lic. No. 9961, 723 Broadway Street, Waterloo, Iowa 50703 - Phone: 319-234-0509

# UNITED STATES PUBLIC LAND SURVEY CORNER CERTIFICATE OF

LAND SURVEY MONUMENTS SITUATED IN SECTION TWO (02), TOWNSHIP NINETY (90) NORTH  
RANGE ELEVEN (11) WEST, OF THE FIFTH PRINCIPAL MERIDIAN, BLACK HAWK COUNTY, IOWA.  
PREVIOUSLY RECORDED IN (NOT PREVIOUSLY RECORDED) (BOOK, PAGE, DOCUMENT NUMBER, ETC.) IN THE COUNTY RECORDER'S OFFICE.  
(SHOW REASON FOR PREPARING THIS CERTIFICATE, THE EVIDENCE AND DETAILED PROCEDURES USED IN ESTABLISHING THE CORNER POSITIONS AND MONUMENTATION FOUND OR PLACED.)  
MONUMENT DESCRIPTION AND REMARKS:  
CURRENT SECTION CORNER CERTIFICATE NOT ON FILE IN THE BLACK HAWK COUNTY ENGINEER'S OFFICE.  
FOUND W.P.A. CONCRETE MONUMENT W/BRASS CAP, 0.7 FT. BELOW GRANULAR SURFACE OF PACE ROAD.  
PLACED 5/8 INCH REBAR 0.2 FT BELOW TOP ON NORTH SIDE TO AID IN FUTURE LOCATION.



I HEREBY CERTIFY THAT THIS LAND SURVEYING DOCUMENT WAS PREPARED AND RELATED SURVEY WORK WAS PERFORMED BY ME OR UNDER MY DIRECT PERSONAL SUPERVISION AND THAT I AM A DULY LICENSED LAND SURVEYOR UNDER THE LAWS OF THE STATE OF IOWA.

*Kirk D. Eschliman* DATE: 12/09/2004

KIRK D. ESCHLIMAN, P.L.S. IOWA LIC. NO. 9961  
MY LICENSE RENEWAL DATE IS DECEMBER 31, 2005  
PAGES OR SHEETS COVERED BY THIS SIGNATURE & SEAL: SHEET 1 OF 1

FOR: SHIRLEY M. CHASE  
11045 FAIRBANK ROAD  
FAIRBANK, IOWA 50629

REQ. BY: SHIRLEY CHASE  
FAIRBANK, IOWA

**KESS & ASSOCIATES, INC.**  
PROFESSIONAL LAND SURVEYORS : 723 BROADWAY, WATERLOO, IOWA 50703-5811  
DATE: 12/09/2004 C.A.D.D. FILE: 03B22SCC2.DWG PROJECT NO.: 03B22

