

Jeffrey P. Helland, 1107 Technology Parkway, Cedar Falls, Iowa 50613-6951, (319)-266-0161

UNITED STATES PUBLIC LAND SURVEY CORNER CERTIFICATE
OF

LAND SURVEY MONUMENTS SITUATED IN SECTION NO. 2, TOWNSHIP NO. 90 NORTH, RANGE NO. 11 WEST OF THE FIFTH PRINCIPAL MERIDIAN, BLACK HAWK COUNTY, IOWA.
PREVIOUSLY RECORDED IN N/A

(SHOW REASON FOR PREPARING THIS CERTIFICATE, THE EVIDENCE AND DETAILED PROCEDURES USED IN ESTABLISHING THE CORNER POSITIONS AND MONUMENTATION FOUND OR PLACED.)

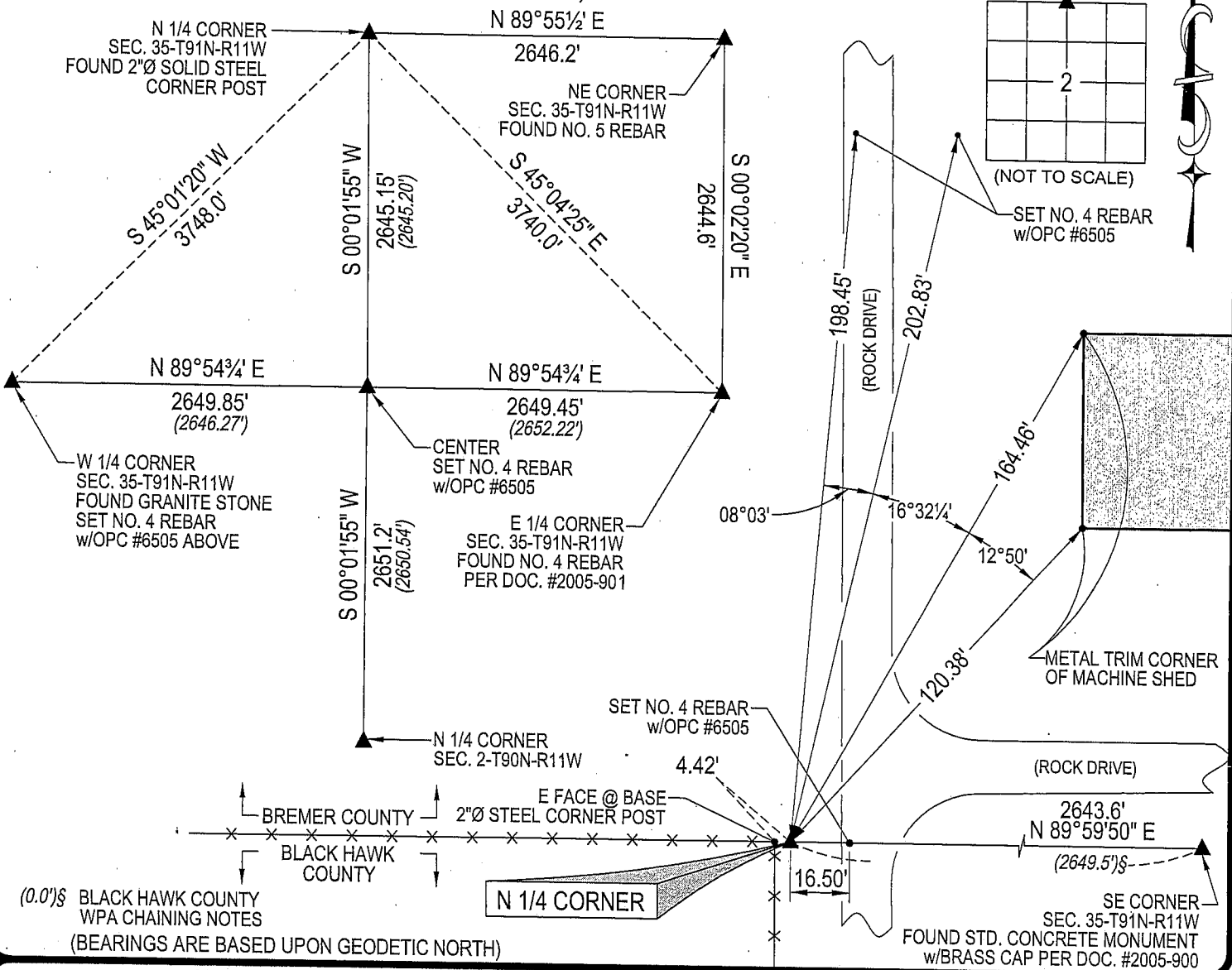
MONUMENT DESCRIPTION AND REMARKS:

NO USPLSCC ON FILE. SURVEY COMPLETED IN THE E 1/2 OF SEC. 35-T91N-R11W.

N 1/4 CORNER: BREMER COUNTY ENGINEER RECORDS CALL FOR [POST IN MOUND BY GOVERNMENT SURVEY]. BLACK HAWK COUNTY ENGINEER TIES CALL FOR [S.C.M.] PLAT OF SURVEY DATED 3/5/1980 (BREMER COUNTY) CALLS FOR [FO. CONC MON]. FOUND BROKEN-OFF BASE OF STANDARD CONCRETE MONUMENT 2.2' DEEP, SET NO. 4 REBAR w/OPC #6505 ABOVE.

PLAN VIEW

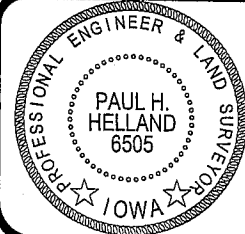
(SHOW A MINIMUM OF THREE REFERENCE TIES TO DURABLE PHYSICAL OBJECTS, RELEVANT MONUMENTS AND PHYSICAL CONDITIONS THAT WILL ENABLE RECOVERY OF THE CORNER.)



HELLAND ENGINEERING & SURVEYING, LTD.
1107 Technology Parkway
Cedar Falls, Iowa 50613-6951
(319)-266-0161

SHINER = 8D NAIL & 1 5/16"Ø METAL SHINER
OPC = PLASTIC CAP (O=ORANGE, R=RED, Y=YELLOW)

(00") RECORDED AS FILE NAME: 06-303C4.DWG



I hereby certify that this land surveying document was prepared and the related survey work was performed by me or under my direct personal supervision and that I am a duly licensed Land Surveyor under the laws of the State of Iowa.

Paul H. Helland
License Number 6505
My license renewal date is December 31, 2007.
All pages or sheets are covered by this seal except:

CORNER	SECTION	TOWNSHIP	RANGE
N 1/4 CORNER	2	90N	11W

Rec